

# AIP SUPPLEMENT 043/2026

## UNITED KINGDOM



UK Aeronautical Information Services  
 NATS Swanwick  
 Sopwith Way  
 Southampton  
 SO31 7AY  
 aissupervisor@nats.co.uk  
 http://www.nats.aero/ais  
 stephen.maxted@caa.co.uk (Content - CAA TR & C)

### Date Of Publication

28 May 2026

### Notes

- (a) All times are UTC.
- (b) References are to the UK AIP.
- (c) Information, where applicable, should also be used to amend appropriate charts.



## TEMPORARY DANGER AREA (FELTHORPE, NORFOLK), BVLOS UAS OPERATIONS TRIAL, 28 MAY - 28 NOVEMBER 2026

- 1 Beyond visual line of sight (BVLOS) remotely piloted unmanned aircraft system (UAS) operations will take place **between 28 May and 28 November 2026**. As the UAS will be operating BVLOS and does not have full Detect and Avoid capability, therefore will be segregated in this phase of the trial within a Temporary Danger Area (TDA).
- 2 The TDA complex is sponsored by StirlingX Ltd in accordance with Airspace Change reference ACP-2025-025.
- 3 The UAS is equipped with an ADS-B and Mode-S transponder.
- 4 Flights will take place **between 0900-1700 (0800-1600) Monday to Friday**.
- 5 The UAS will operate from Felthorpe, within the Norwich CTR, and participate in an airspace trial to the North East and South West of Norwich International Airport (NWI).
- 6 The required TDA will be notified for activation by NOTAM no less than 24 hours prior to the planned flights.
- 7 Any crewed aircraft wishing to transit or enter the TDA must be equipped with ADS-B OUT / SSR Mode 3A, S and the equipment must be active and serviceable (except in the case of an emergency), establish and maintain two-way radio communication with Norwich ATC, and obtain a specific clearance to cross or enter the TDA.
- 8 The TDA will be established to segregate the RPAS activity as defined below:

Identification and Name Lateral Limits	Upper Limit Lower Limit	Remarks (time of activity, type of restriction, nature of hazard, risk of interception)
EGD297A 525033.49N 0012552.76E - 525007.96N 0012804.74E - 525005.20N 0013159.54E - 524902.73N 0013359.75E - 524825.38N 0013315.36E - 524843.01N 0012851.43E - 524923.82N 0012530.23E - 525033.49N 0012552.76E	Upper Limit: 750 FT AMSL Lower Limit: SFC	Activity: BVLOS Unmanned Aircraft System.  Service: SUACS: Norwich Radar on channel 119.355.  Contact: Pre-flight information / Booking: Email: engagement@stirlingx.io.  Hours: Daytime only.  Activated by NOTAM.  Access: Access for crewed aircraft is possible with approval from Norwich ATC.  Any crewed aircraft wishing to transit or enter the TDA must be equipped with ADS-B OUT and or SSR Mode 3A, S equipment must be active and serviceable (except in the case of an emergency), establish and maintain two-way radio communication with NWI ATC, and obtain a specific clearance to cross or enter the TDA.

Identification and Name Lateral Limits	Upper Limit Lower Limit	Remarks (time of activity, type of restriction, nature of hazard, risk of interception)
EGD297B 524933.12N 0011557.56E - 525035.16N 0012007.02E - 525033.49N 0012552.76E - 524923.82N 0012530.23E - 524915.55N 0012028.66E - 524817.41N 0011656.09E - 524933.12N 0011557.56E	Upper Limit: 750 FT AMSL Lower Limit: SFC	Activity: BVLOS Unmanned Aircraft System.  Service: SUACS: Norwich Radar on channel 119.355.  Contact: Pre-flight information / Booking: Email: engagement@stirlingx.io.  Hours: Daytime only.  Activated by NOTAM.  Access: Access for crewed aircraft is possible with approval from Norwich ATC.  Any crewed aircraft wishing to transit or enter the TDA must be equipped with ADS-B OUT and or SSR Mode 3A, S equipment must be active and serviceable (except in the case of an emergency), establish and maintain two-way radio communication with NWI ATC, and obtain a specific clearance to cross or enter the TDA.
EGD297C 524710.94N 0010727.94E - 524933.12N 0011557.56E - 524817.41N 0011656.09E - 524519.73N 0010721.18E - 524710.94N 0010727.94E	Upper Limit: 750 FT AMSL Lower Limit: SFC	Activity: BVLOS Unmanned Aircraft System.  Service: SUACS: Norwich Radar on channel 119.355.  Contact: Pre-flight information / Booking: Email: engagement@stirlingx.io.  Hours: Daytime only.  Activated by NOTAM.  Access: Access for crewed aircraft is possible with approval from Norwich ATC.  Any crewed aircraft wishing to transit or enter the TDA must be equipped with ADS-B OUT and or SSR Mode 3A, S equipment must be active and serviceable (except in the case of an emergency), establish and maintain two-way radio communication with NWI ATC, and obtain a specific clearance to cross or enter the TDA.
EGD297D 524238.50N 0005915.75E - 524637.28N 0010528.06E - 524710.94N 0010727.94E - 524519.73N 0010721.18E - 524145.28N 0010033.33E - 524238.50N 0005915.75E	Upper Limit: 750 FT AMSL Lower Limit: SFC	Activity: BVLOS Unmanned Aircraft System.  Service: SUACS: Norwich Radar on channel 119.355.  Contact: Pre-flight information / Booking: Email: engagement@stirlingx.io.  Hours: Daytime only.  Activated by NOTAM.  Access: Access for crewed aircraft is possible with approval from Norwich ATC.  Any crewed aircraft wishing to transit or enter the TDA must be equipped with ADS-B OUT and or SSR Mode 3A, S equipment must be active and serviceable (except in the case of an emergency), establish and maintain two-way radio communication with NWI ATC, and obtain a specific clearance to cross or enter the TDA.

Identification and Name Lateral Limits	Upper Limit Lower Limit	Remarks (time of activity, type of restriction, nature of hazard, risk of interception)
EGD297E 524142.15N 0005213.77E - 524244.70N 0005652.70E - 524238.50N 0005915.75E - 524145.28N 0010033.33E - 524120.65N 0005946.58E - 524120.62N 0005545.38E - 524020.34N 0005354.59E - 524142.15N 0005213.77E	Upper Limit: 750 FT AMSL Lower Limit: SFC	Activity: BVLOS Unmanned Aircraft System.  Service: SUACS: Norwich Radar on channel 119.355.  Contact: Pre-flight information / Booking: Email: engagement@stirlingx.io.  Hours: Daytime only.  Activated by NOTAM.  Access: Access for crewed aircraft is possible with approval from Norwich ATC.  Any crewed aircraft wishing to transit or enter the TDA must be equipped with ADS-B OUT and or SSR Mode 3A, S equipment must be active and serviceable (except in the case of an emergency), establish and maintain two-way radio communication with NWI ATC, and obtain a specific clearance to cross or enter the TDA.
EGD297F 523959.11N 0004612.05E - 524018.87N 0004730.97E - 524014.87N 0004947.11E - 524044.11N 0005132.75E - 524142.15N 0005213.77E - 524020.34N 0005354.59E - 523937.45N 0005235.94E - 523830.65N 0004708.06E - 523959.11N 0004612.05E	Upper Limit: 750 FT AMSL Lower Limit: SFC	Activity: BVLOS Unmanned Aircraft System.  Service: SUACS: Norwich Radar on channel 119.355.  Contact: Pre-flight information / Booking: Email: engagement@stirlingx.io.  Hours: Daytime only.  Activated by NOTAM.  Access: Access for crewed aircraft is possible with approval from Norwich ATC.  Any crewed aircraft wishing to transit or enter the TDA must be equipped with ADS-B OUT and or SSR Mode 3A, S equipment must be active and serviceable (except in the case of an emergency), establish and maintain two-way radio communication with NWI ATC, and obtain a specific clearance to cross or enter the TDA.
EGD297G 524519.73N 0010721.18E - 524603.20N 0010941.44E - 524208.26N 0011257.97E - 524124.54N 0011056.54E - 524519.73N 0010721.18E	Upper Limit: 750 FT AMSL Lower Limit: SFC	Activity: BVLOS Unmanned Aircraft System.  Service: SUACS: Norwich Radar on channel 119.355.  Contact: Pre-flight information / Booking: Email: engagement@stirlingx.io.  Hours: Daytime only.  Activated by NOTAM.  Access: Access for crewed aircraft is possible with approval from Norwich ATC.  Any crewed aircraft wishing to transit or enter the TDA must be equipped with ADS-B OUT and or SSR Mode 3A, S equipment must be active and serviceable (except in the case of an emergency), establish and maintain two-way radio communication with NWI ATC, and obtain a specific clearance to cross or enter the TDA.

- 9** Further information regarding Special Use Airspace Crossing Service (SUACS) can be found within UK Enroute Information ENR 1.1 - General Rules.
- 10** TDA transit/entry approval is required. Requests for access should be made via Norwich ATC on the frequency above.
- 11** As part of the ACP process requirements, StirlingX Ltd are collecting feedback regarding this TDA complex and its impact over the duration which will be shared with the CAA. All feedback regarding this may be sent via email to engagement@stirlingx.io.

# TEMPORARY DANGER AREA

## EGD297A/B/C/D/E/F/G

10 0 10NM

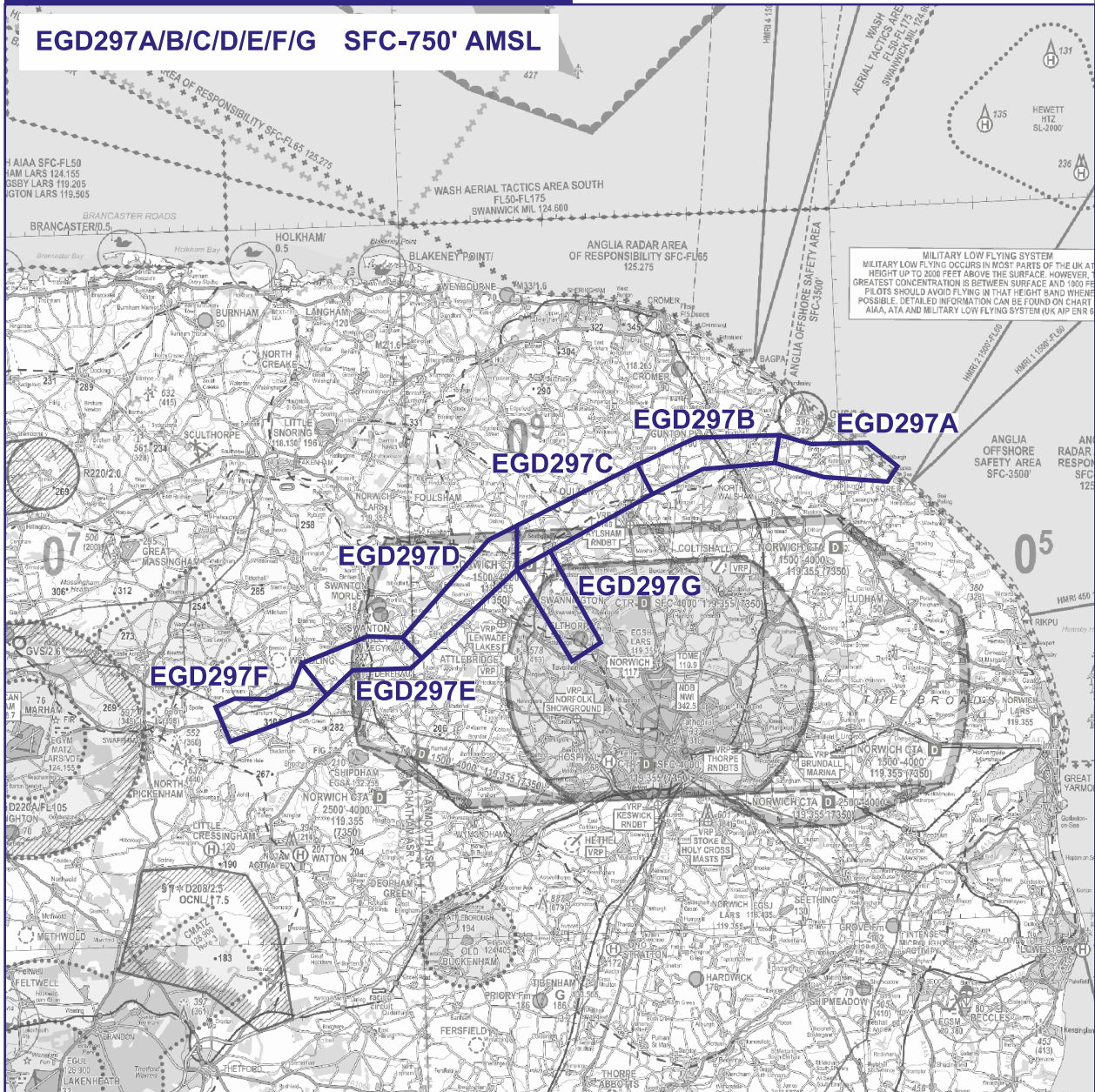
NOTE: Aeronautical/topographical background detail shown from CAA VFR chart.

See NATS AIS website for latest VFR amendments.

NOT FOR OPERATIONAL USE - PLANNING PURPOSES ONLY

SEE FULL DOCUMENT FOR DETAILS,  
DATES & ACTIVE TIMES

### EGD297A/B/C/D/E/F/G SFC-750' AMSL



2026\_040\_CR11713\_GRAPHIC DRAWN 21 APR 26