

# AERONAUTICAL INFORMATION CIRCULAR M 054/2026

UNITED KINGDOM



UK Aeronautical Information Services  
NATS Swanwick  
Sopwith Way  
Southampton  
SO31 7AY  
aissupervisor@nats.co.uk  
<http://www.nats.aero/ais>  
david.ridley@caa.co.uk (Content - CAA SARG)

## Date Of Publication

30 Apr 2026

## Subject

Airspace Restrictions



## RESTRICTION OF FLYING REGULATIONS: FARNBOROUGH INTERNATIONAL AIR SHOW, 13 - 24 JULY 2026

- 1 The Farnborough International Air Show and associated display rehearsals will be held **between 13 and 24 July 2026**. Many aircraft will be involved in high energy manoeuvres during the notified period. The Secretary of State for Transport has decided that it is necessary to introduce Restriction of Flying Regulations under Article 239 of the Air Navigation Order 2016.
- 2 Subject to paragraph 3, no aircraft is to fly below 3500 FT AMSL within the area of a circle having a radius of 3 NM whose centre is at 511631N 0004639W (Farnborough Airport) between:
  - a) **0800 and 1800 hours on each of the eight days beginning 13 July and ending 20 July 2026;**
  - b) **1215 and 1800 hours on each of the three days beginning 21 July and ending 23 July 2026;**
  - c) **1100 and 1530 hours on 24 July 2026.**
- 3 Paragraph 2 does not apply to any aircraft:
  - a) Operating with a clearance issued by:
    - i. The ATCU at Farnborough Airport;
    - ii. The London Terminal Control Centre, Swanwick; or
  - b) Flying within the Blackbushe Airport Local Flying Area (LFA) at a height not above 800 FT AAL (Blackbushe Aerodrome Level) whilst in communication with the ATSU at Blackbushe Airport.
- 4 A separate AIP Supplement (034/2026) will be published containing further details of holds associated with the airshow. Pilots are encouraged to obtain a service from Farnborough Radar who may be contacted on 125.250 MHz when intending to transit the holding area.
- 5 Note that controlled airspace transit approvals of the Farnborough CTR's may be delayed during the published Restricted Area (Temporary) periods, in order to protect displaying aircraft.
- 6 The Restricted Area (Temporary) directly affects the Blackbushe LFA and may also affect aircraft inbound to aerodromes in the vicinity of Farnborough's controlled airspace. Aerodrome Operators and ATS Units affected by these Restricted Areas (Temporary) are requested to bring this AIC to the attention of their resident and local operators.
- 7 Pilots should also note that an unusually large number of departures can be expected in the vicinity of Farnborough on the **25 and 26 July 2026**.
- 8 A model rocketry competition will take place outside the times of the Restricted Area (Temporary).
- 9 The times mentioned in this Notice are Universal Co-ordinated Time (UTC), which is one hour behind British Summer Time (BST).
- 10 In relation to this document, the term 'aircraft' includes any small balloon, any kite weighing not more than 2 KG, any unmanned aircraft and any parachute including a parascending parachute or paramotor.
- 11 Details of Restricted Airspace feature in the daily AIS Information Line message 08085-354802 and 01489-887515 and will be included on the Preflight Information Bulletins (PIB) through the AIS Website at <http://nats.aero/ais>.
- 12 Further enquiries can be made to Mr David Ridley, Airspace Regulator, Safety and Airspace Regulation Group, Civil Aviation Authority at [david.ridley@caa.co.uk](mailto:david.ridley@caa.co.uk).

**RESTRICTED AREA (TEMPORARY)**

# FARNBOROUGH INTERNATIONAL AIR SHOW

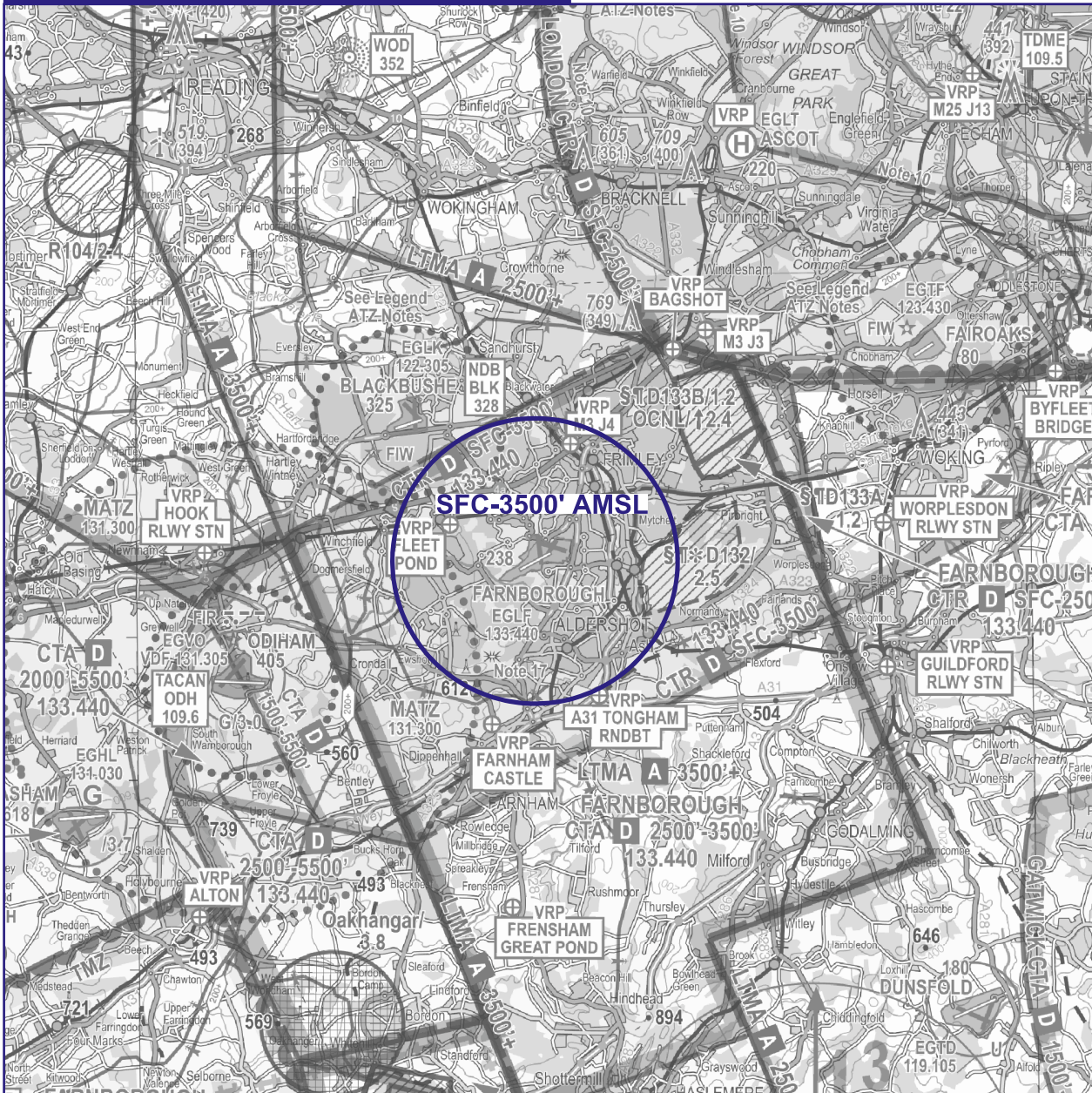
5 0 5NM

NOTE: Aeronautical/topographical background detail shown from CAA VFR chart.

See NATS AIS website for latest VFR amendments.

NOT FOR OPERATIONAL USE - PLANNING PURPOSES ONLY

**SEE FULL DOCUMENT FOR DETAILS,  
DATES & ACTIVE TIMES**



2026\_032\_CR11706\_GRAPHIC DRAWN 27 MAR 26