

AERONAUTICAL INFORMATION CIRCULAR M 150/2025

UNITED KINGDOM



UK Aeronautical Information Services
NATS Swanwick
Sopwith Way
Southampton
SO31 7AY
aissupervisor@nats.co.uk
<http://www.nats.aero/ais>
alan.frew@caa.co.uk (Content - CAA SARG)

Date Of Publication

21 Aug 2025

Subject

Airspace Restrictions

Cancellation

BFS 045/2025



RESTRICTION OF FLYING REGULATIONS: SS RICHARD MONTGOMERY, SHEERNESS, KENT 11 JULY 2025 - UFN

- 1 The Secretary of State for Transport has decided that it is necessary in the interests of public safety to introduce Restriction of Flying Regulations under Article 239 of the Air Navigation Order 2016 in the vicinity of the wrecked vessel SS Richard Montgomery near Sheerness, Kent.
- 2 Subject to paragraph 3 at **0001 hours on 11 July 2025 until further notice**, no aircraft is to fly below 13,200 FT AMSL within the area bounded by a circle radius 0.5 NM centred at 512758N 0004712E.
- 3 Paragraph 2 does not apply to any aircraft:
 - a) operated by or on behalf of:
 - i. a Police Air Support Unit;
 - ii. an Emergency Medical Service; or
 - iii. the Maritime and Coastguard Agency.flying in response to an emergency situation only.
 - b) operating with the permission of the Secretary of State.
- 4 In relation to this document, the term 'aircraft' includes any small balloon, any kite weighing not more than 2 KG, any unmanned aircraft and any parachute including a parascending parachute or paramotor.
- 5 Details of Restricted Airspace feature in the daily AIS Information Line message 08085-354802 and 01489-887515 and will be included on the Preflight Information Bulletins (PIB) through the AIS Website at <http://nats.aero/ais>.
- 6 Further enquiries can be made to Mr Alan Frew, Airspace Regulator, Safety and Airspace Regulation Group, Civil Aviation Authority, via alan.frew@caa.co.uk.

RESTRICTED AREA (TEMPORARY)

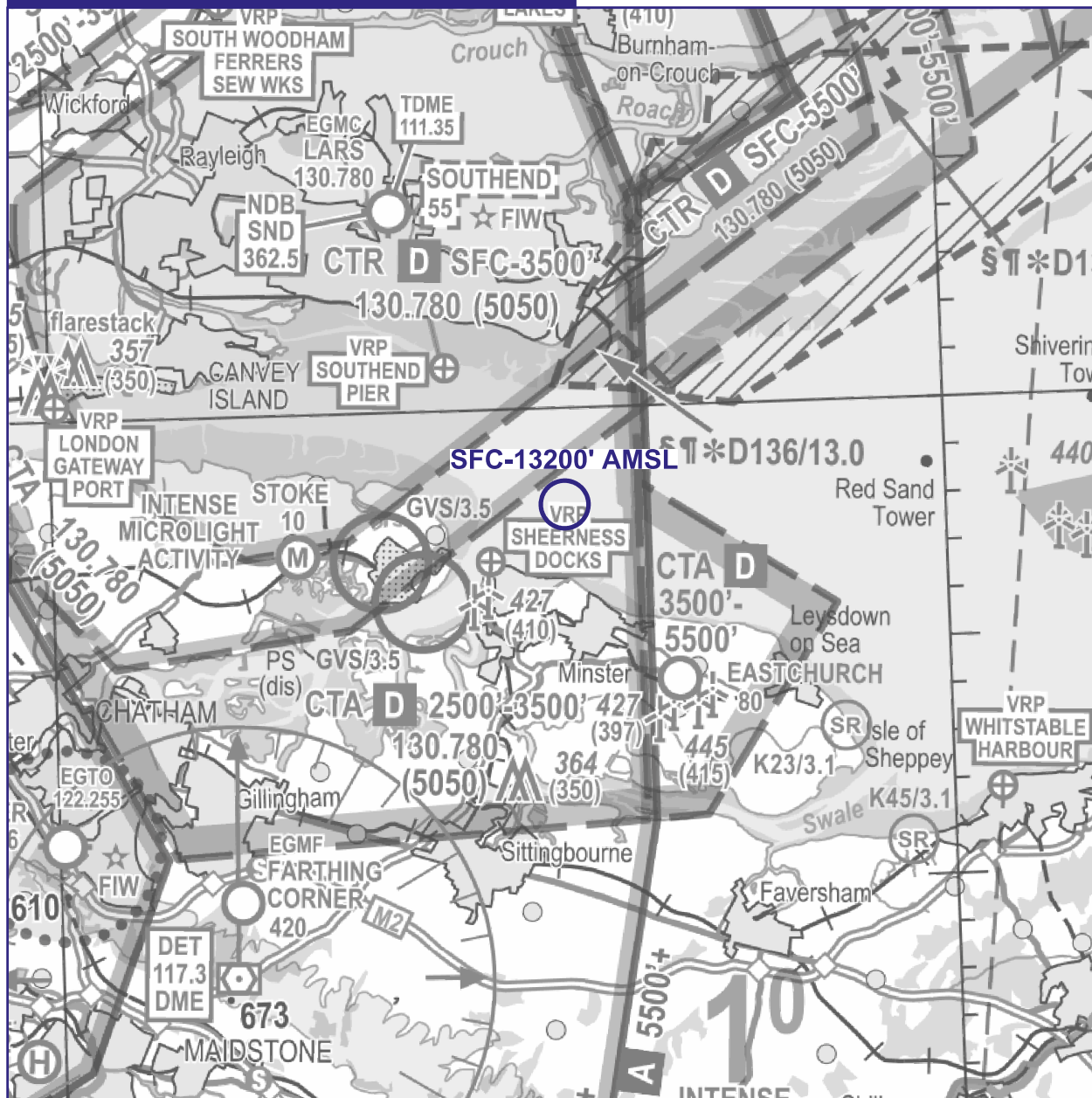
SS RICHARD MONTGOMERY

5 0 5NM

NOTE: Aeronautical/topographical background detail shown from CAA VFR chart.
See NATS AIS website for latest VFR amendments.

NOT FOR OPERATIONAL USE - PLANNING PURPOSES ONLY

SEE FULL DOCUMENT FOR DETAILS,
DATES & ACTIVE TIMES



2025_099_CR10390_GRAPHIC DRAWN 10 JUL 25