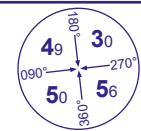


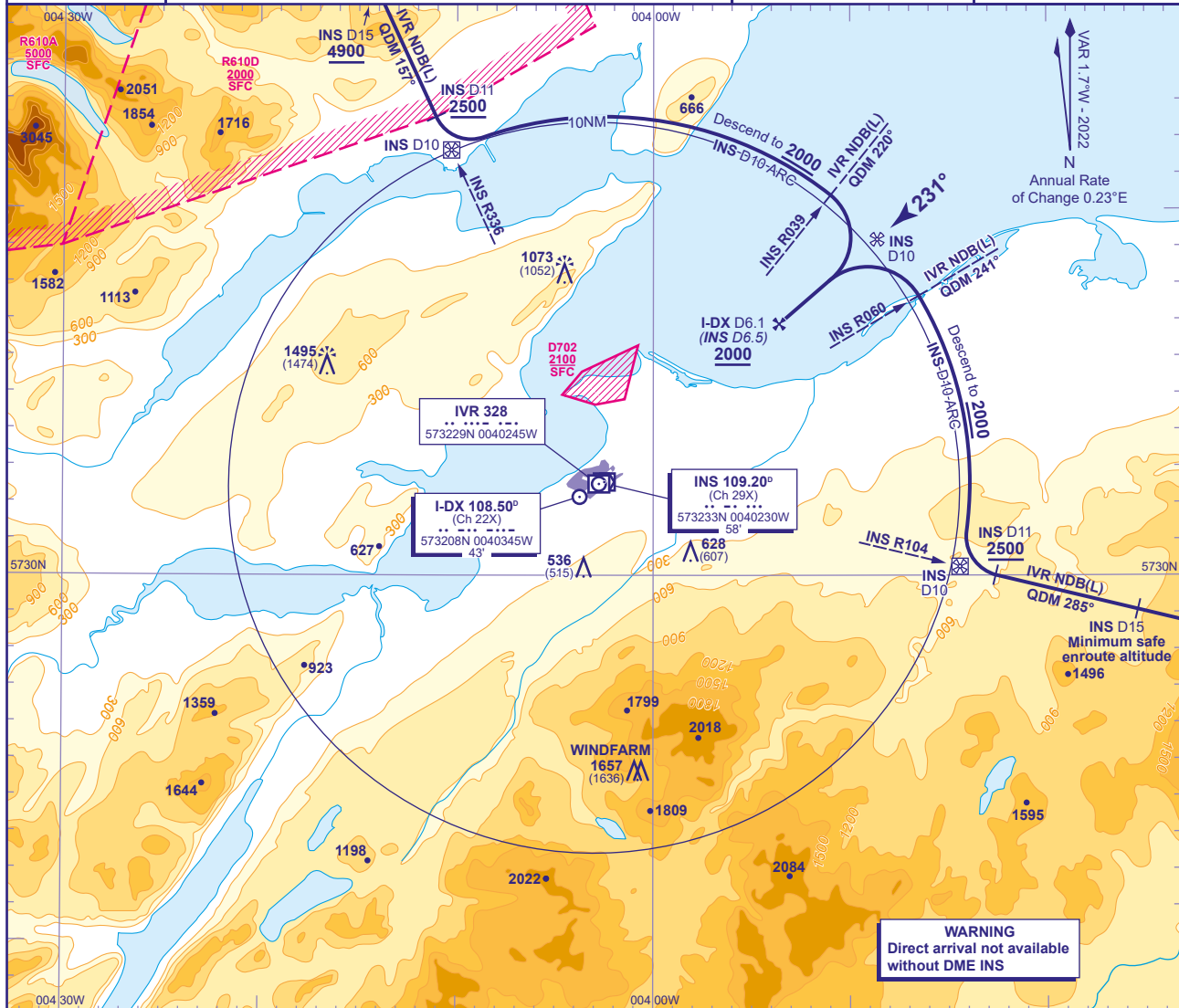
INSTRUMENT APPROACH CHART - ICAO

INVERNESS Direct Arrivals ILS/LOC/DME RWY 23 (ACFT CAT A,B)



APP	122.605	INVERNESS APPROACH	AD ELEVATION	31
TWR	118.405, 122.605	INVERNESS TOWER	THR ELEVATION	21
RAD	122.605	INVERNESS RADAR	OBSTACLE ELEVATION	1495 AMSL (1474) (ABOVE THR)
ATIS	109.200	INVERNESS INFORMATION	BEARINGS ARE MAGNETIC	

TRANSITION ALTITUDE
3000



Arriving direct from VOR/DME ADN
Arrival from VOR/DME ADN on VOR INS R104 (QDM 285°) **not below minimum safe enroute altitude**. Request ATC approval for DME arc arrival when within INS DME 40. After passing INS DME 25, with ATC approval, descend **not below 5600**. After passing INS DME 15 descend **not below 2500**. From INS DME 11 turn right to establish on INS DME 10 arc anticlockwise. When established, descend along the arc to **not below 2000**. From lead radial VOR INS R060 (IVR NDB(L) QDM 241°), turn left onto localizer. From FAF I-DX DME 6.1 (INS DME 6.5) at **2000**(1979), continue with ILS/LOC/DME final approach.

Arriving on N560 Southbound
Request ATC approval for DME arc arrival when within INS DME 40. When approved, after passing **BONBY** (INS DME 23) descend **not below 4900**. Establish on INS R336 (QDM 157°) from INS DME 15, descend **not below 2500**. From INS DME 11 turn left to establish on INS DME 10 arc clockwise. When established, descend along the arc **not below 2000**(1979). From lead VOR INS R039 (IVR NDB(L) QDM 220°) turn right onto localizer. From FAF I-DX DME 6.1 (INS DME 6.5) at **2000**(1979), continue with ILS/LOC/DME final approach.

CHANGE (13/24): INS VOR RECALIBRATION AND RELATED MAG TRACKS.