

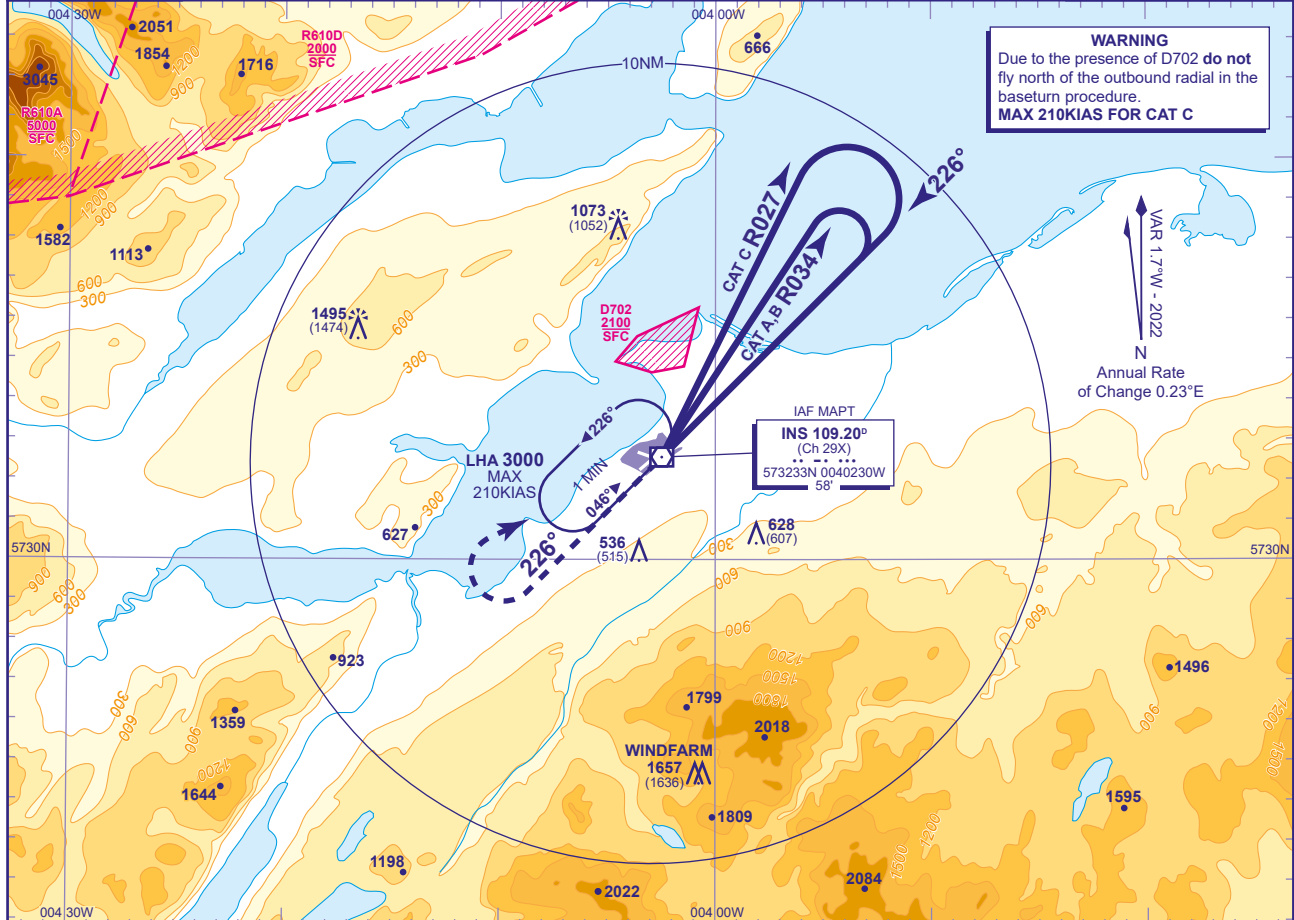
INSTRUMENT APPROACH CHART - ICAO

INVERNESS VOR RWY 23
(ACFT CAT A,B,C)



APP	122.605	INVERNESS APPROACH	AD ELEVATION	31
TWR	118.405, 122.605	INVERNESS TOWER	THR ELEVATION	21
RAD	122.605	INVERNESS RADAR	OBSTACLE ELEVATION	1495 AMSL (1474) (ABOVE THR)
ATIS	109.200	INVERNESS INFORMATION	BEARINGS ARE MAGNETIC	

TRANSITION ALTITUDE
3000

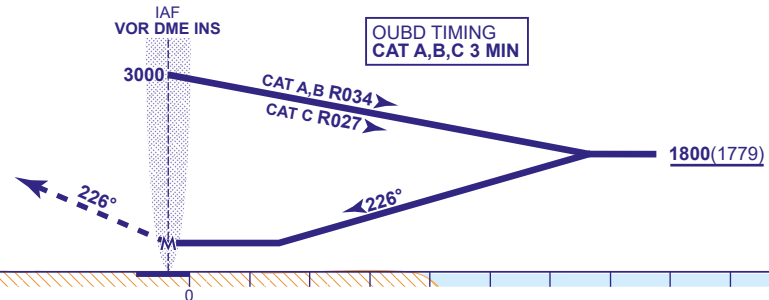


WARNING
Due to the presence of D702 do not fly north of the outbound radial in the baseturn procedure.
MAX 210KIAS FOR CAT C

IAF MAPt
INS 109.20°
(Ch 29X)
573233N 0040230W
58

MAPt VOR INS
Climb straight ahead to 3000 then climbing turn right to VOR INS at 3000 to hold (see note 2) or as directed.

OUBD TIMING
CAT A,B,C 3 MIN



Aircraft Category		A	B	C
OCA (OCH)	Procedure	450(429)	450(429)	450(429)
	Total Area	700(669)	840(809)	1400(1369)
VM(C)OCA (OCH AAL)	North of RWY 05/23	490(459)	540(509)	1100(1069)

NOTE 1 FAT offset 4° north of RWY 23 C/L.
NOTE 2 Pilots should take account of the climb performance of their aircraft to arrange their flight to reach INS VOR at 3000.

CHANGE (13/24): INS VOR RECALIBRATION. MAG TRACKS.