

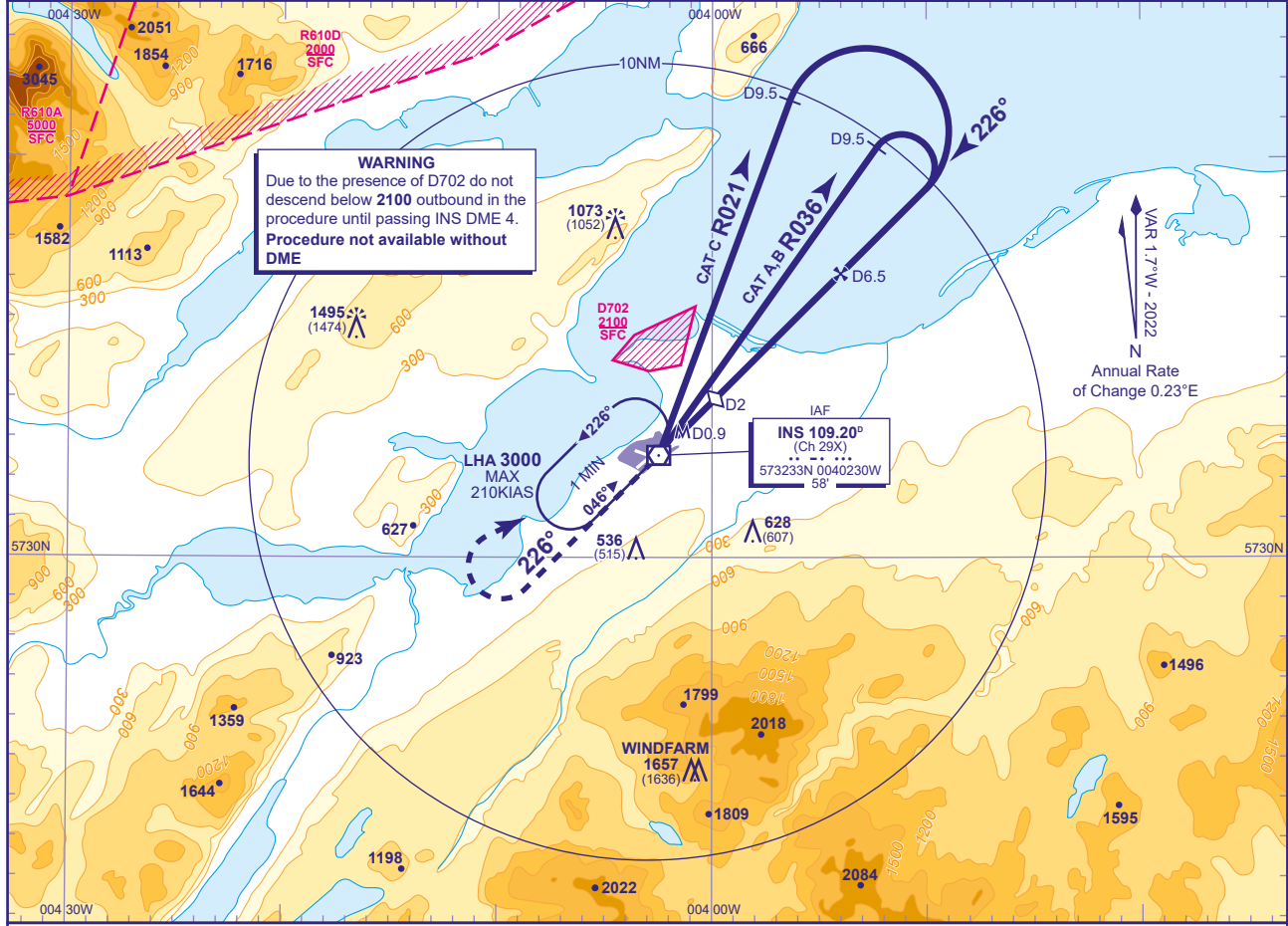
# INVERNESS APPROACH CHART - ICAO

**INVERNESS  
VOR/DME  
RWY 23**  
(ACFT CAT A,B,C)



APP	122.605	INVERNESS APPROACH	AD ELEVATION	31
TWR	118.405, 122.605	INVERNESS TOWER	THR ELEVATION	21
RAD	122.605	INVERNESS RADAR	OBSTACLE ELEVATION	1495 AMSL (1474) (ABOVE THR)
ATIS	109.200	INVERNESS INFORMATION	BEARINGS ARE MAGNETIC	

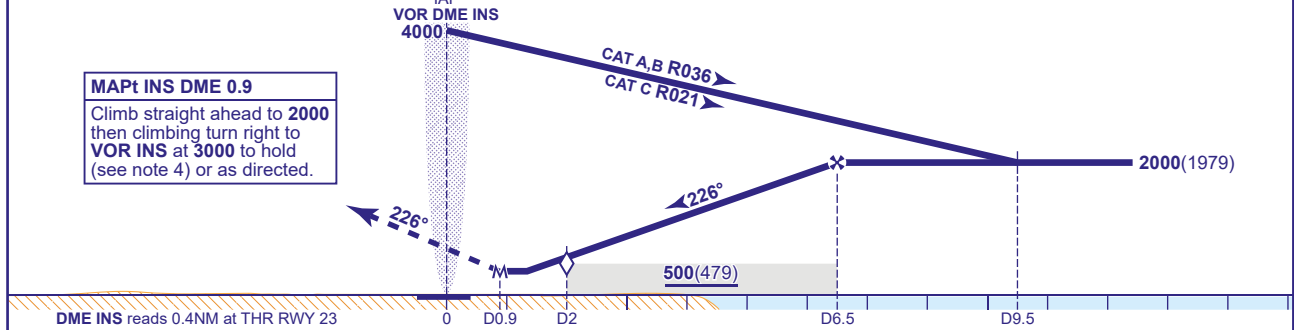
TRANSITION ALTITUDE  
**3000**



**RECOMMENDED PROFILE** Gradient 5.2%, 320FT/NM

DME INS	5	4	3	2 (SDF)
ALT(HGT)	1500(1479)	1180(1159)	860(839)	540(519)

Arrival not below MSA. (See note 3).



DME INS reads 0.4NM at THR RWY 23											
				0	D0.9	D2	D6.5	D9.5			
Aircraft Category		A	B	C	Rate of descent	G/S KT	160	140	120	100	80
OCA (OCH)	Procedure	400(379)	400(379)	400(379)		FT/MIN	850	750	640	530	430
VM(C)OCA (OCH AAL)	Total Area	700(669)	840(809)	1400(1369)							
	North of RWY 05/23	490(459)	540(509)	1100(1069)							

**NOTE 1** FAT offset 4° north of RWY 23 C/L.  
**2** Lowest altitude to commence procedure from hold is 3000.  
**3** Subject to ATC approval, aircraft inbound to VOR/DME INS may descend to 3500 after passing INS DME 10 inbound.  
**4** Pilots should take account of the climb performance of their aircraft to arrange their flight to reach INS VOR at 3000.  
**5** Direct arrivals see chart AD 2-EGPE-8-16.

**CHANGE (13/24):** INS VOR RECALIBRATION. MAG TRACKS.