

# INVERNESS

## Direct Arrivals

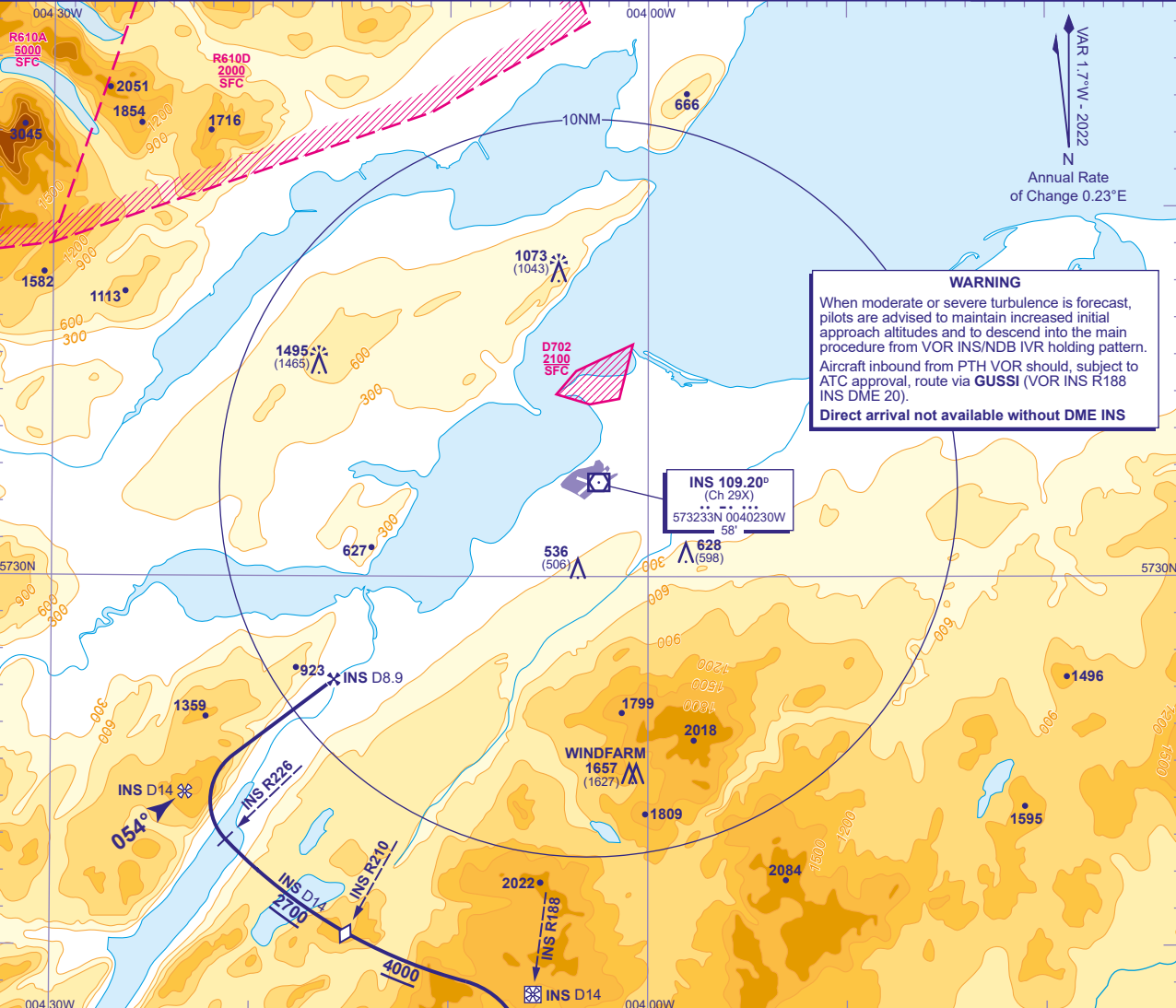
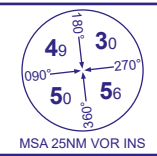
### VOR/DME

### RWY 05

(ACFT CAT C)

APP	122.605	INVERNESS APPROACH	AD ELEVATION	31
TWR	118.405, 122.605	INVERNESS TOWER	THR ELEVATION	30
RAD	122.605	INVERNESS RADAR	OBSTACLE ELEVATION	1495 AMSL (1465) (ABOVE THR)
ATIS	109.200	INVERNESS INFORMATION	BEARINGS ARE MAGNETIC	

TRANSITION ALTITUDE  
**3000**



**WARNING**

When moderate or severe turbulence is forecast, pilots are advised to maintain increased initial approach altitudes and to descend into the main procedure from VOR INS/NDB IVR holding pattern. Aircraft inbound from PTH VOR should, subject to ATC approval, route via **GUSSE** (VOR INS R188 INS DME 20).  
**Direct arrival not available without DME INS**

VAR 1.7°W - 2022  
N  
Annual Rate of Change 0.23°E

**Arriving on N560 Northbound**  
 Arrival from the south on VOR INS R188 (QDM 008°) **not below 5800**. Request ATC approval for DME arc arrival when within INS DME 40. After passing INS DME 25, with ATC approval, descend **not below 5000**. From INS DME 16 turn left to establish on INS DME 14 arc clockwise. When established, descend along the arc **not below 4000**. After crossing step down VOR INS R210, continue descent to **2700**(2670), then from lead VOR INS R228 turn right onto extended FAT. From FAF INS DME 8.9 at **2700**(2670), continue with VOR/DME final approach.

**CHANGE (13/24):** INS VOR RECALIBRATION & ASSOCIATED TRACKS.