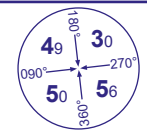


INSTRUMENT APPROACH CHART - ICAO

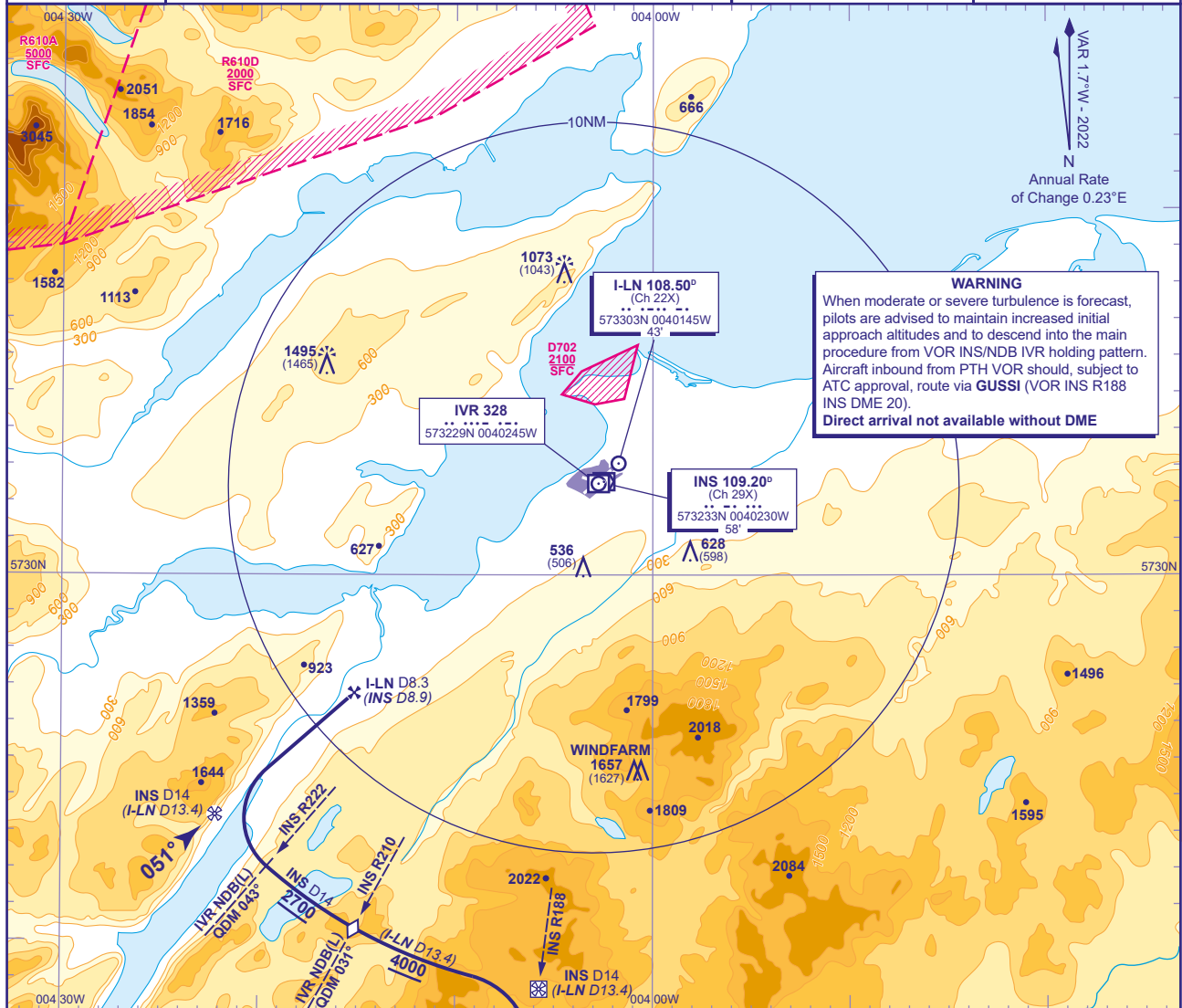
INVERNESS Direct Arrivals ILS/LOC/DME RWY 05 (ACFT CAT C)



MSA 25NM VOR INS

APP	122.605	INVERNESS APPROACH	AD ELEVATION	31
TWR	118.405, 122.605	INVERNESS TOWER	THR ELEVATION	30
RAD	122.605	INVERNESS RADAR	OBSTACLE ELEVATION	1495 AMSL (1465) (ABOVE THR)
ATIS	109.200	INVERNESS INFORMATION	BEARINGS ARE MAGNETIC	

TRANSITION ALTITUDE
3000



WARNING
When moderate or severe turbulence is forecast, pilots are advised to maintain increased initial approach altitudes and to descend into the main procedure from VOR INS/NDB IVR holding pattern. Aircraft inbound from PTH VOR should, subject to ATC approval, route via **GUSSI** (VOR INS R188 INS DME 20).
Direct arrival not available without DME

VAR 1.2°W - 2022
N
Annual Rate of Change 0.23°E

Arriving on N560 Northbound
Arrival from the south on VOR INS R188 (QDM 009°) **not below 5800**. Request ATC approval for DME arc arrival when within INS DME 40. After passing INS DME 25, with ATC approval, descend **not below 5000**. From INS DME 16 (I-LN DME 15.4) turn left to establish on INS DME 14 (I-LN DME 13.4) arc clockwise. When established, descend along the arc **not below 4000**. After crossing step down VOR INS R210 (IVR NDB(L) QDM 031°), continue descent to **2700**(2670), then from lead VOR INS R222 (IVR NDB(L) QDM 043°) turn right onto localizer. From FAF I-LN DME 8.3 (INS DME 8.9) at **2700**(2670), continue with ILS/LOC/DME final approach.

CHANGE (13/24): INS VOR RECALIBRATION AND RELATED MAG TRACKS.