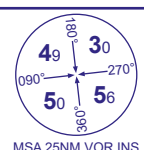


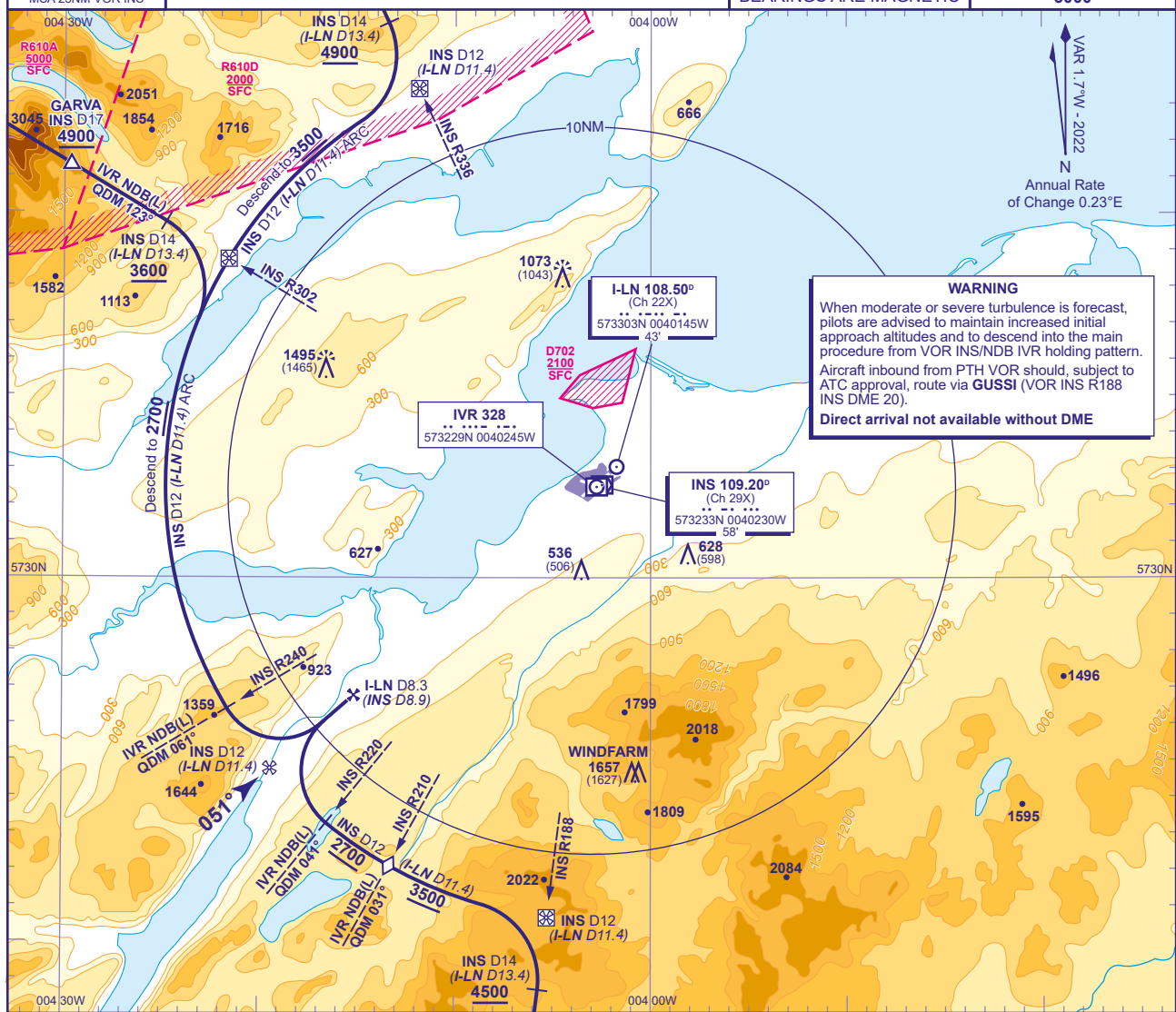
# INSTRUMENT APPROACH CHART - ICAO

# INVERNESS Direct Arrivals ILS/LOC/DME RWY 05 (ACFT CAT A,B)



APP	122.605	INVERNESS APPROACH	AD ELEVATION	31
TWR	118.405, 122.605	INVERNESS TOWER	THR ELEVATION	30
RAD	122.605	INVERNESS RADAR	OBSTACLE ELEVATION	1495 AMSL (1465) (ABOVE THR)
ATIS	109.200	INVERNESS INFORMATION	BEARINGS ARE MAGNETIC	

TRANSITION ALTITUDE  
**3000**



**WARNING**  
When moderate or severe turbulence is forecast, pilots are advised to maintain increased initial approach altitudes and to descend into the main procedure from VOR/INS/NDB IVR holding pattern. Aircraft inbound from PTH VOR should, subject to ATC approval, route via **GUSSI** (VOR INS R188 INS DME 20).  
**Direct arrival not available without DME**

VAR 1.7°W - 2022  
Annual Rate of Change 0.23°E

**Arriving on N560 Northbound**  
Arrival from the south on VOR INS R188 (QDM 009°) **not below 5800**. Request ATC approval for DME arc arrival when within INS DME 40. After passing INS DME 25, with ATC approval, descend **not below 5000**, and after passing **GUSSI** (INS DME 20) descend **not below 4500**. From INS DME 14 (I-LN DME 13.4) turn left to establish on INS DME 12 (I-LN DME 11.4) arc clockwise. When established, descend along the arc **not below 3500**. After crossing step down VOR INS R210 (IVR NDB(L) QDM 031°), continue descent to **2700**(2670), then from lead VOR INS R220 (IVR NDB(L) QDM 041°) turn right onto localizer. From FAF I-LN DME 8.3 (INS DME 8.9) at **2700**(2670), continue with ILS/LOC/DME final approach.

**Arriving on N560 Southbound**  
Arrival on N560 **not below 5000**. Request ATC approval for DME arc arrival when within INS DME 40. When approved, after passing **BONBY** (INS DME 23) descend **not below 4900**. Establish on INS R336 (QDM 157°) from INS DME 14 (I-LN DME 13.4) turn right to establish on INS DME 12 (I-LN DME 11.4) arc anticlockwise. When established, descend along the arc **not below 3500**. After crossing INS R302 (IVR NDB(L) QDM 123°), continue descent to **2700**(2670), then from lead VOR INS R240 (IVR NDB(L) QDM 061°) turn left onto localizer. From FAF I-LN DME 8.3 (INS DME 8.9) at **2700**(2670), continue with ILS/LOC/DME final approach.

**Arriving on Y906 Southeastbound**  
Arrival on VOR INS R302 (IVR NDB(L) QDM 123°) **not below 5200**. Request ATC approval for DME arc arrival when within INS DME 40. After passing INS DME 25, with ATC approval, descend **not below 4900**, and after passing **GARVA** (INS DME 17) descend **not below 3600**. From INS DME 14 (I-LN DME 13.4) turn right to establish on INS DME 12 (I-LN DME 11.4) arc anticlockwise. When established continue descent to **2700**(2670), then from lead VOR INS R240 (IVR NDB(L) QDM 061°) turn left onto localizer. From FAF I-LN DME 8.3 (INS DME 8.9) at **2700**(2670), continue with ILS/LOC/DME final approach.

**CHANGE (13/24):** INS VOR RECALIBRATION AND RELATED MAG TRACKS.