

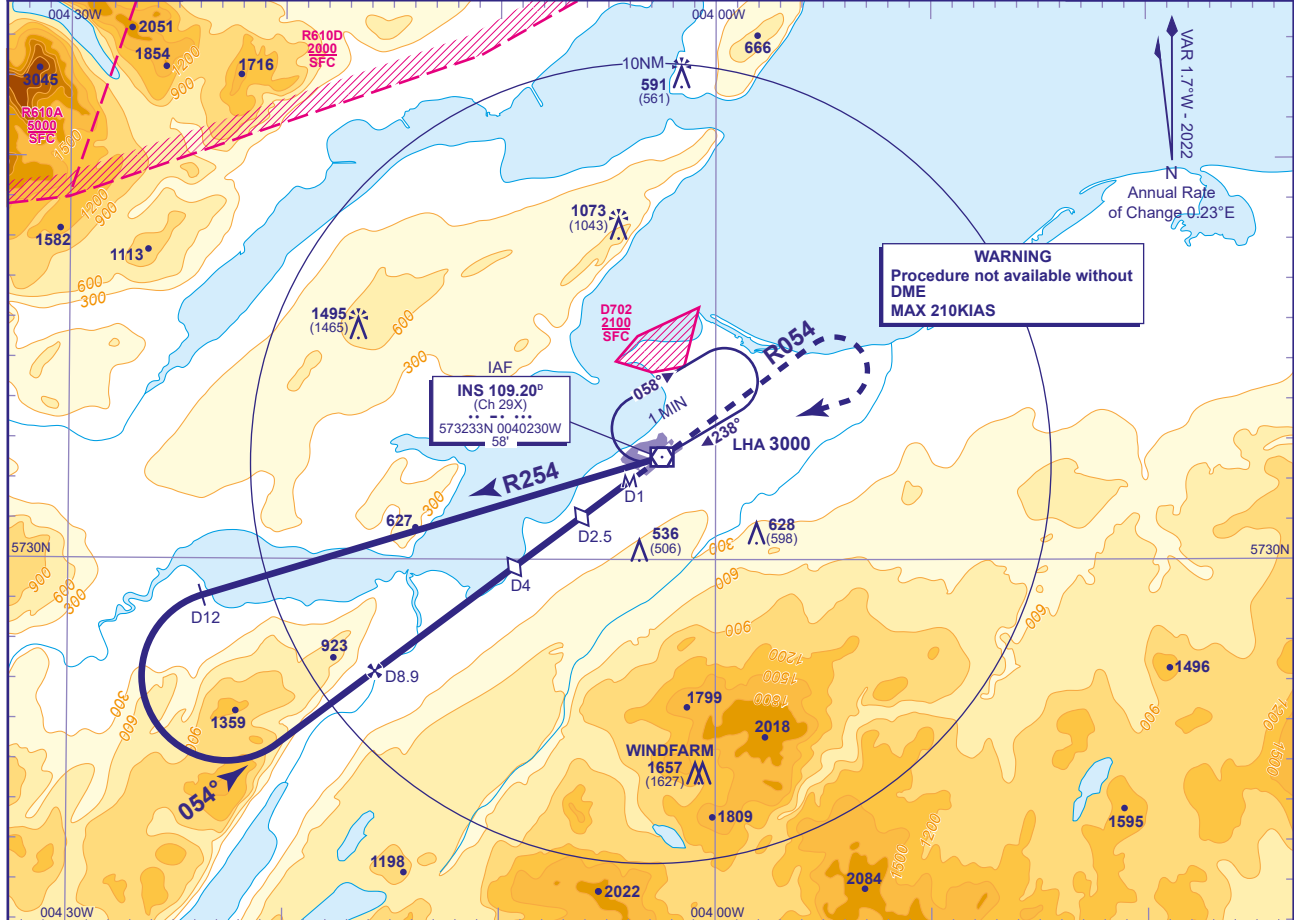
INSTRUMENT APPROACH CHART - ICAO

INVERNESS
VOR/DME
RWY 05
 (ACFT CAT C)



APP	122.605	INVERNESS APPROACH	AD ELEVATION	31
TWR	118.405, 122.605	INVERNESS TOWER	THR ELEVATION	30
RAD	122.605	INVERNESS RADAR	OBSTACLE ELEVATION	1495 AMSL (1465) (ABOVE THR)
ATIS	109.200	INVERNESS INFORMATION	BEARINGS ARE MAGNETIC	

TRANSITION ALTITUDE
3000

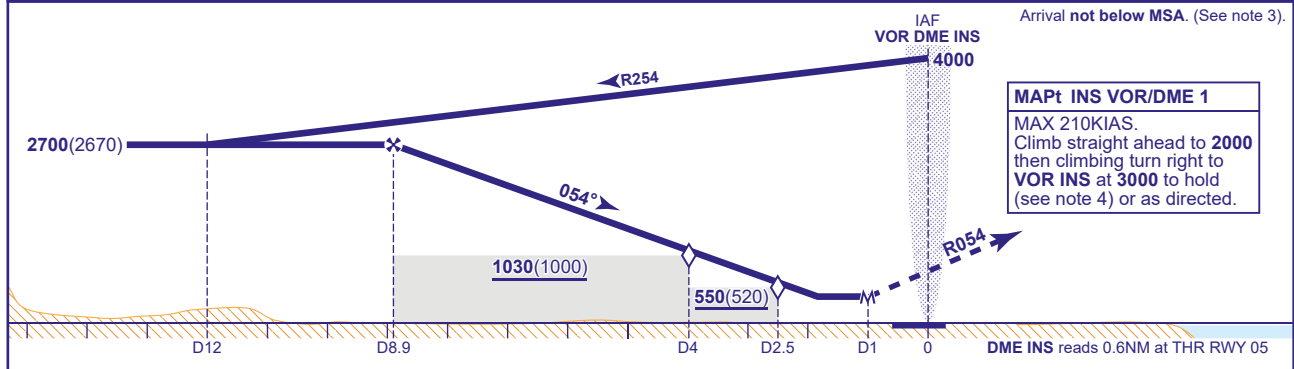


WARNING
 Procedure not available without
 DME
 MAX 210KIAS

INS 109.20°
 (Ch 29X)
 573233N 0040230W
 58'

RECOMMENDED PROFILE Gradient 5.2%, 320FT/NM

DME INS	7	6	5	4 (SDF)	3	2.5 (SDF)	2
ALT(HGT)	2100(2070)	1780(1750)	1460(1430)	1140(1110)	820(790)	660(630)	500(470)



MAPt INS VOR/DME 1
 MAX 210KIAS.
 Climb straight ahead to 2000
 then climbing turn right to
VOR INS at 3000 to hold
 (see note 4) or as directed.

Aircraft Category		C	Rate of descent					G/S KT	160	140	120	100	80
OCA (OCH)	Procedure	430(400)	FT/MIN					850	750	640	530	430	
VM(C)OCA (OCH AAL)	Total Area	1400(1369)											
	North of RWY 05/23	1100(1069)											

NOTE 1 FAT offset 4° north of RWY 05C/L.
2 Lowest altitude to commence procedure from hold is 3000.
3 Subject to ATC approval, aircraft inbound to VOR/DME INS may descend to 3500 after passing INS DME 10 inbound.
4 Pilots should take account of the climb performance of their aircraft to arrange their flight to reach INS VOR at 3000.
5 Direct arrivals see chart AD 2-EGPE-8-8.

CHANGE (13/24): INS VOR RECALIBRATION AND RELATED MAG TRACKS.