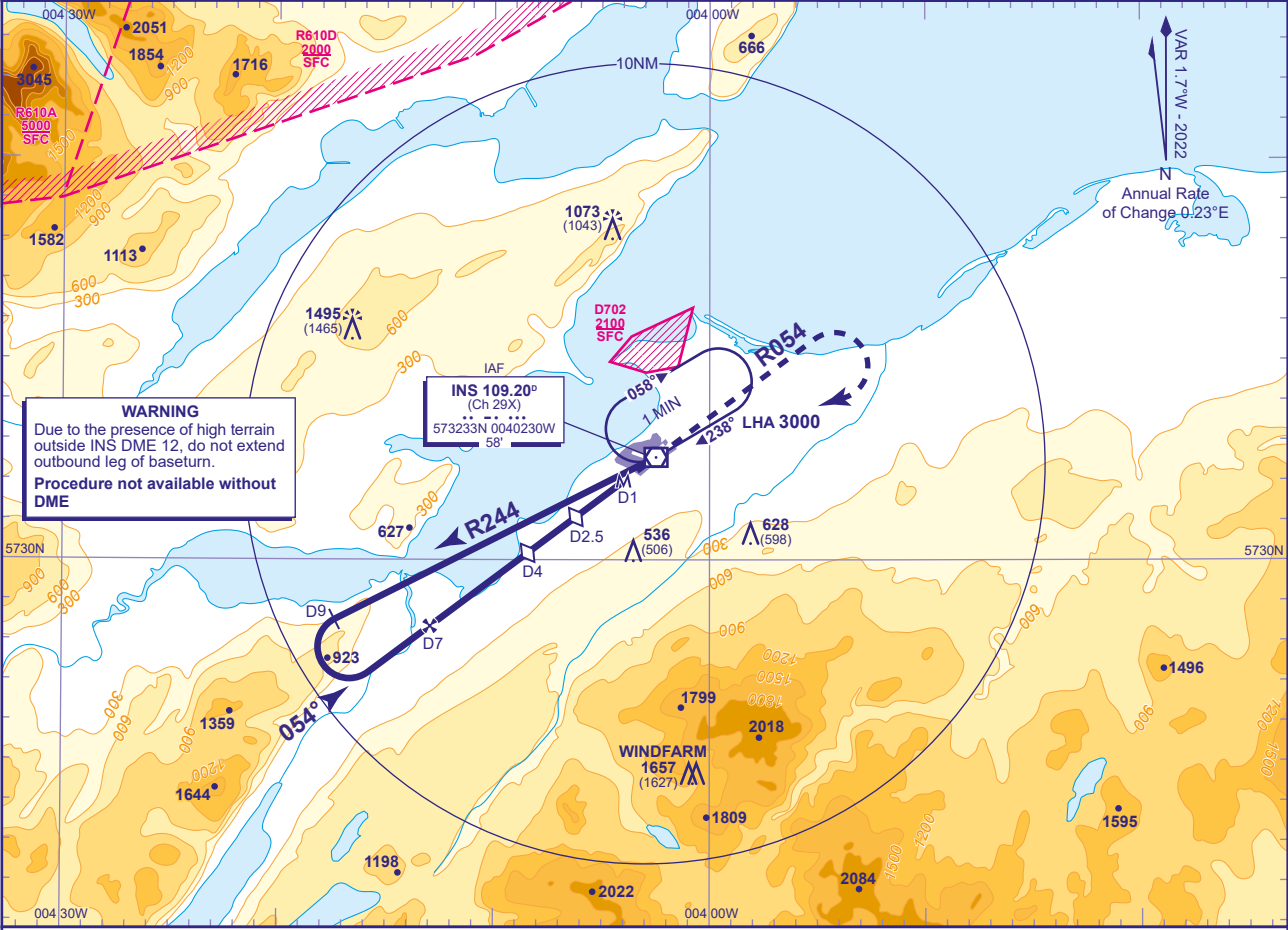


INVERNESS VOR/DME RWY 05
(ACFT CAT A,B)

| | | | | |
|------|------------------|-----------------------|-----------------------|---------------------------------|
| APP | 122.605 | INVERNESS APPROACH | AD ELEVATION | 31 |
| TWR | 118.405, 122.605 | INVERNESS TOWER | THR ELEVATION | 30 |
| RAD | 122.605 | INVERNESS RADAR | OBSTACLE ELEVATION | 1495 AMSL (1465) (ABOVE THR) |
| ATIS | 109.200 | INVERNESS INFORMATION | BEARINGS ARE MAGNETIC | |

TRANSITION ALTITUDE
3000

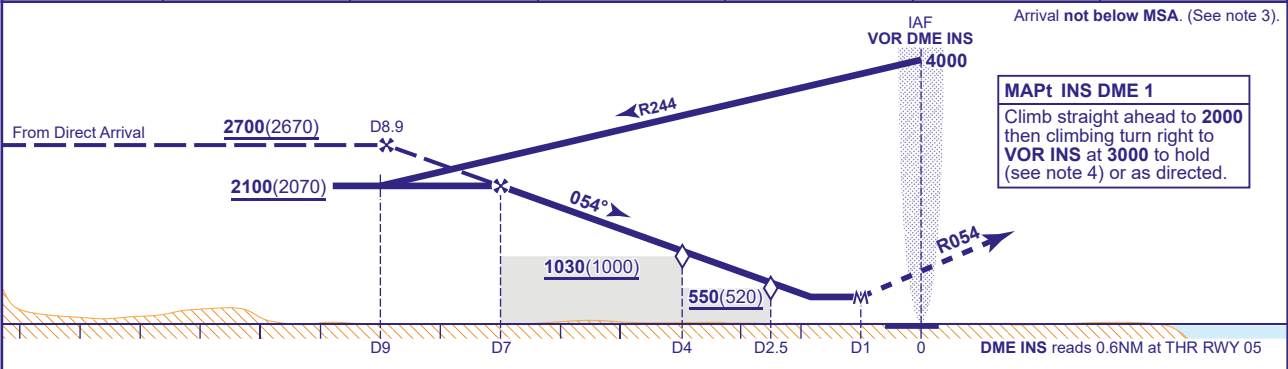


WARNING
Due to the presence of high terrain outside INS DME 12, do not extend outbound leg of baseturn.
Procedure not available without DME

INS 109.20°
(Ch 29X)
573233N 0040230W
58°

RECOMMENDED PROFILE Gradient 5.2%, 320FT/NM

| | | | | | | |
|----------|------------|------------|------------|----------|-----------|----------|
| DME INS | 6 | 5 | 4 (SDF) | 3 | 2.5 (SDF) | 2 |
| ALT(HGT) | 1780(1750) | 1460(1430) | 1140(1110) | 820(790) | 660(630) | 500(470) |



| Aircraft Category | | A | B | Rate of descent | G/S KT | 140 | 120 | 100 | 80 |
|--------------------|--------------------|----------|----------|-----------------|--------|-----|-----|-----|-----|
| OCA (OCH) | Procedure | 430(400) | 430(400) | | FT/MIN | 750 | 640 | 530 | 430 |
| VM(C)OCA (OCH AAL) | Total Area | 700(669) | 840(809) | | | | | | |
| | North of RWY 05/23 | 490(459) | 540(509) | | | | | | |

NOTE 1 FAT offset 4° north of RWY 05 C/L.
2 Lowest altitude to commence procedure from hold is 3000.
3 Subject to ATC approval, aircraft inbound to VOR/DME INS may descend to 3500 after passing INS DME 10 inbound.
4 Pilots should take account of the climb performance of their aircraft to arrange their flight to reach INS VOR at 3000.
5 Direct arrivals see chart AD 2-EGPE-8-9. Intermediate segment at 2700(2670) from direct arrival to FAP shown as dotted line on profile.

CHANGE (13/24): INS VOR RECALIBRATION AND RELATED MAG TRACKS.