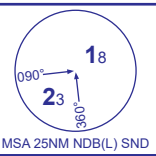


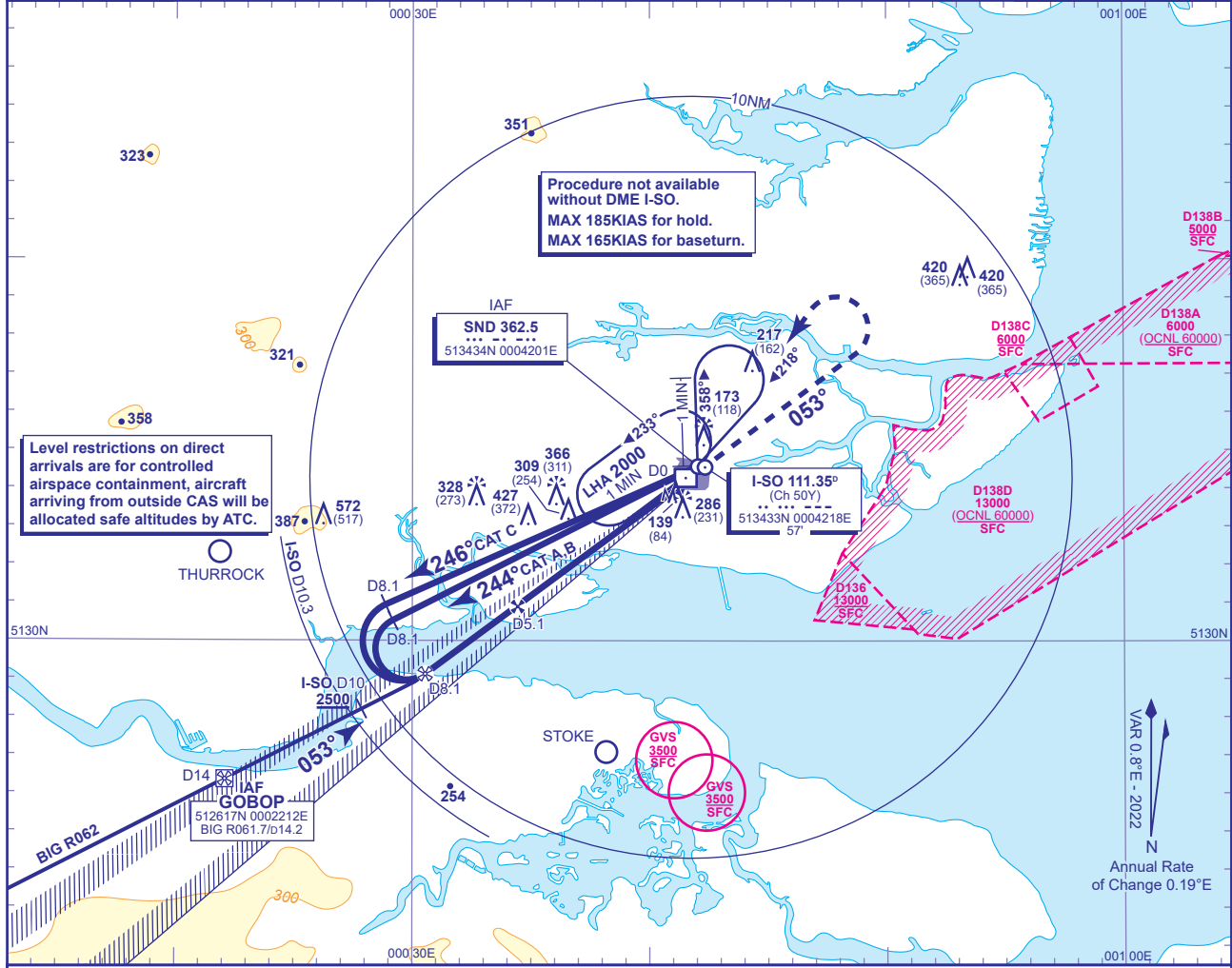
INSTRUMENT CHART - ICAO

SOUTHEND
LOC/DME/NDB(L)
RWY 05
 (ACFT CAT A,B,C)



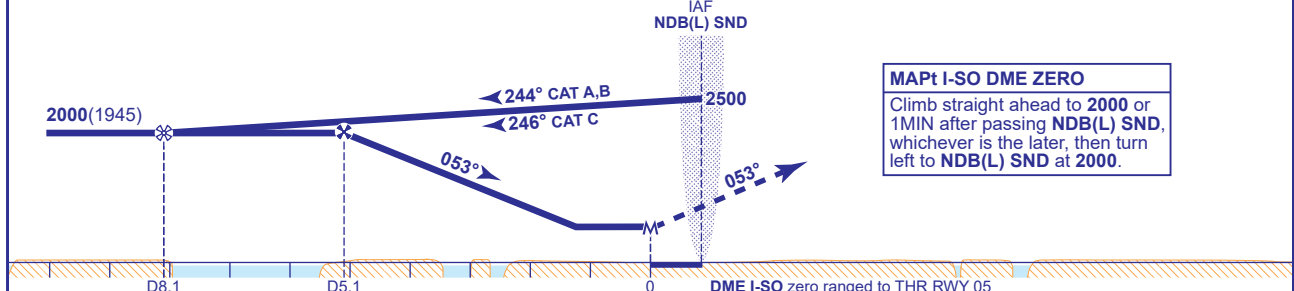
APP	130.780	SOUTHEND APPROACH	AD ELEVATION	55
TWR	127.730	SOUTHEND TOWER	THR ELEVATION	55
RAD	130.780	SOUTHEND RADAR	OBSTACLE ELEVATION	572 AMSL (517) (ABOVE THR)
	128.965	SOUTHEND DIRECTOR		
ATIS	136.055	SOUTHEND INFORMATION	BEARINGS ARE MAGNETIC	

TRANSITION ALTITUDE
6000



RECOMMENDED PROFILE Gradient 6.12%, 370FT/NM

DME I-SO	5	4	3	2
ALT(HGT)	1970 (1915)	1590 (1535)	1220 (1165)	850 (795)



Aircraft Category		A	B	C	Rate of descent	G/S KT	160	140	120	100	80
OCA (OCH)	Procedure	580(525)	580(525)	580(525)		FT/MIN	990	870	740	620	500
VM(C)OCA (OCH AAL)	Total Area	600(545)	700(645)	900(845)							

NOTES

- Aircraft will normally be required to hold not lower than 2500. Lowest altitude to commence procedure from NDB(L) SND following Missed Approach is 2000.
- Maximum 185KIAS for hold and 165KIAS base turns.
- Do not exceed I-SO D10.3 to remain within controlled airspace.

CHANGE (13/24): BIG VOR/DME RECALIBRATED. GOBOP RADIAL.