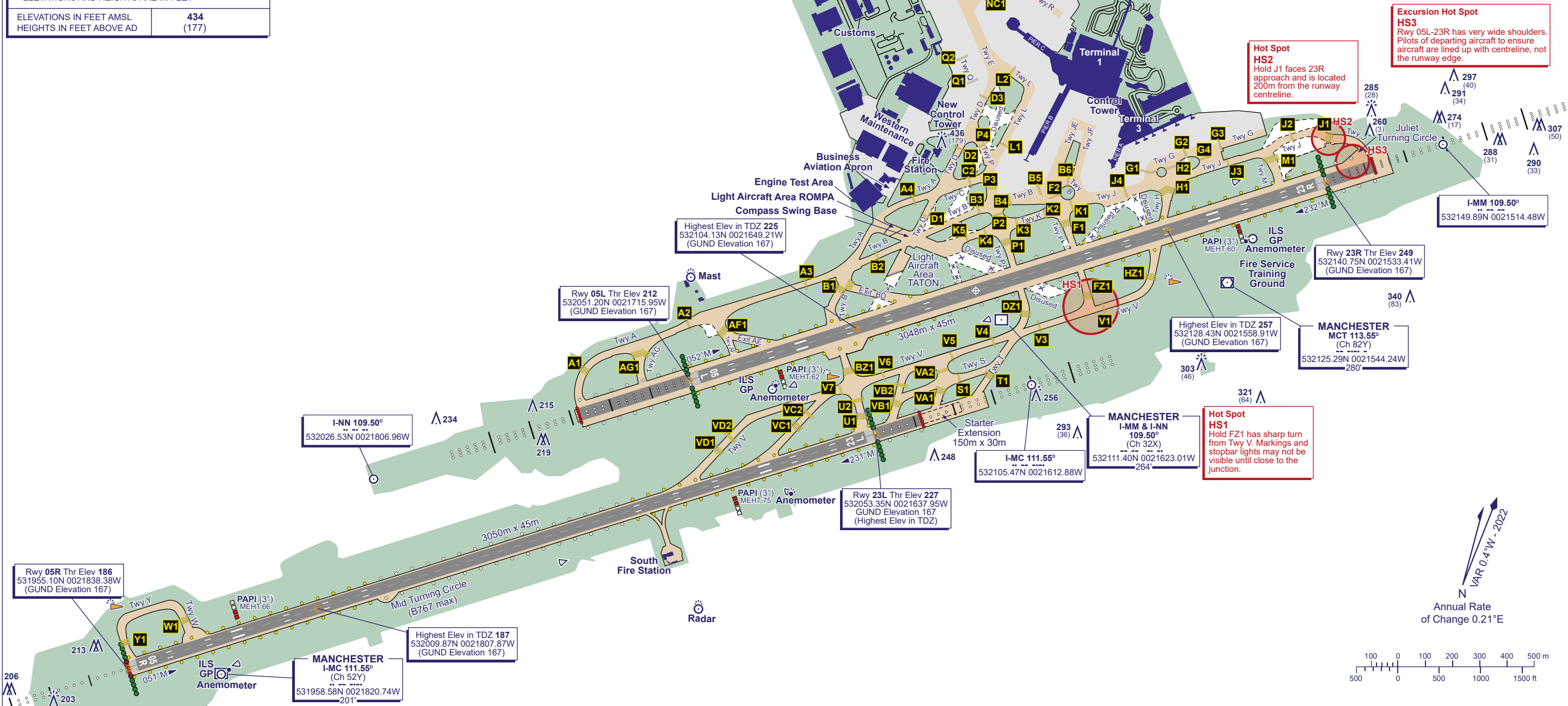


LIGHTING	
THR 05L/23R THR 05R/23L	HI green with HI green W bars. HI green with HI green W bars.
RWY 05L/23R RWY 05R/23L	HI bi-d edge. HI colour coded C/L. End lights red. TDZ 900 m. HI elev bi-d with LI omni-d component. HI colour coded C/L. End lights red.
TWY	Green C/L, blue edge on sharp curves. Red stop bars at holding points. Green/yellow lead-off C/L to CAT III stop bars.

COM		
ARRIVAL ATIS	128.180	MANCHESTER INFO
DEPARTURE ATIS	121.980	MANCHESTER DEPARTURE INFO
TWR	118.630 119.405	MANCHESTER TOWER
	121.855	MANCHESTER GROUND
	121.705	MANCHESTER DELIVERY
	121.600	MANCHESTER FIRE

GUND (Geoid Undulation) = The height of the Geoid (MSL) above the Reference Ellipsoid (WGS 84) at the stated position.	
BEARINGS ARE MAGNETIC ELEVATIONS AND HEIGHTS ARE IN FEET	
ELEVATIONS IN FEET AMSL	434
HEIGHTS IN FEET ABOVE AD	(177)

RUNWAY/TAXIWAY/APRON PHYSICAL CHARACTERISTICS			
APRON / RWY / TWY	SURFACE	BEARING STRENGTH	ELEVATION
RWY 05L/23R	Concrete/Un grooved Asphalt	94/F/C/W/T	-
RWY 05R/23L	Concrete/Grooved Asphalt	79/F/C/W/T	-
Apron	Concrete	56/R/C/W/T	-
Apron	Concrete	97/R/B/W/T	-
TWY A	Concrete/Asphalt	66/F/C/W/T	-
TWY A (between AE & B)	Concrete/Asphalt	46/F/C/W/T	-
TWY S, T & U	Concrete/Asphalt	79/R/C/W/T	-
TWY V & VA	Concrete/Asphalt	79/R/C/W/T	-
TWY VB & VC	Concrete/Asphalt	79/R/C/W/T	-
TWY W & Y	Concrete/Asphalt	79/R/C/W/T	-
TWY (All other)	Concrete/Asphalt	95/R/C/W/T	-



Excursion Hot Spot HS3
Rwy 05L-23R has very wide shoulders. Pilots of departing aircraft to ensure aircraft are lined up with centreline, not the runway edge.

Hot Spot HS2
Hold J1 faces 23R approach and is located 200m from the runway centreline.

MANCHESTER I-MC 111.55°
(Ch 82Y)
532125.29N 0021544.24W
280'

Hot Spot HS1
Hold FZ1 has sharp turn from Twy V. Markings and stopbar lights may not be visible until close to the junction.

MANCHESTER I-MM & I-NN 109.50°
(Ch 32X)
532111.40N 0021623.01W
264'

Rwy 23L Thr Elev 227
532053.35N 0021637.95W
GUND Elevation 167
(Highest Elev in TDZ)

Rwy 05L Thr Elev 212
532051.20N 0021715.95W
(GUND Elevation 167)

Highest Elev in TDZ 225
532104.13N 0021649.21W
(GUND Elevation 167)

Rwy 23R Thr Elev 249
532140.75N 0021533.41W
(GUND Elevation 167)

MANCHESTER I-MC 111.55°
(Ch 52Y)
531958.58N 0021820.74W
201'

Highest Elev in TDZ 187
532009.87N 0021807.87W
(GUND Elevation 167)

Rwy 05R Thr Elev 186
531955.10N 0021838.38W
(GUND Elevation 167)

CHANGE (10/24): TWY Z ALIGNMENT. HOLDS Z2 & Z3.