

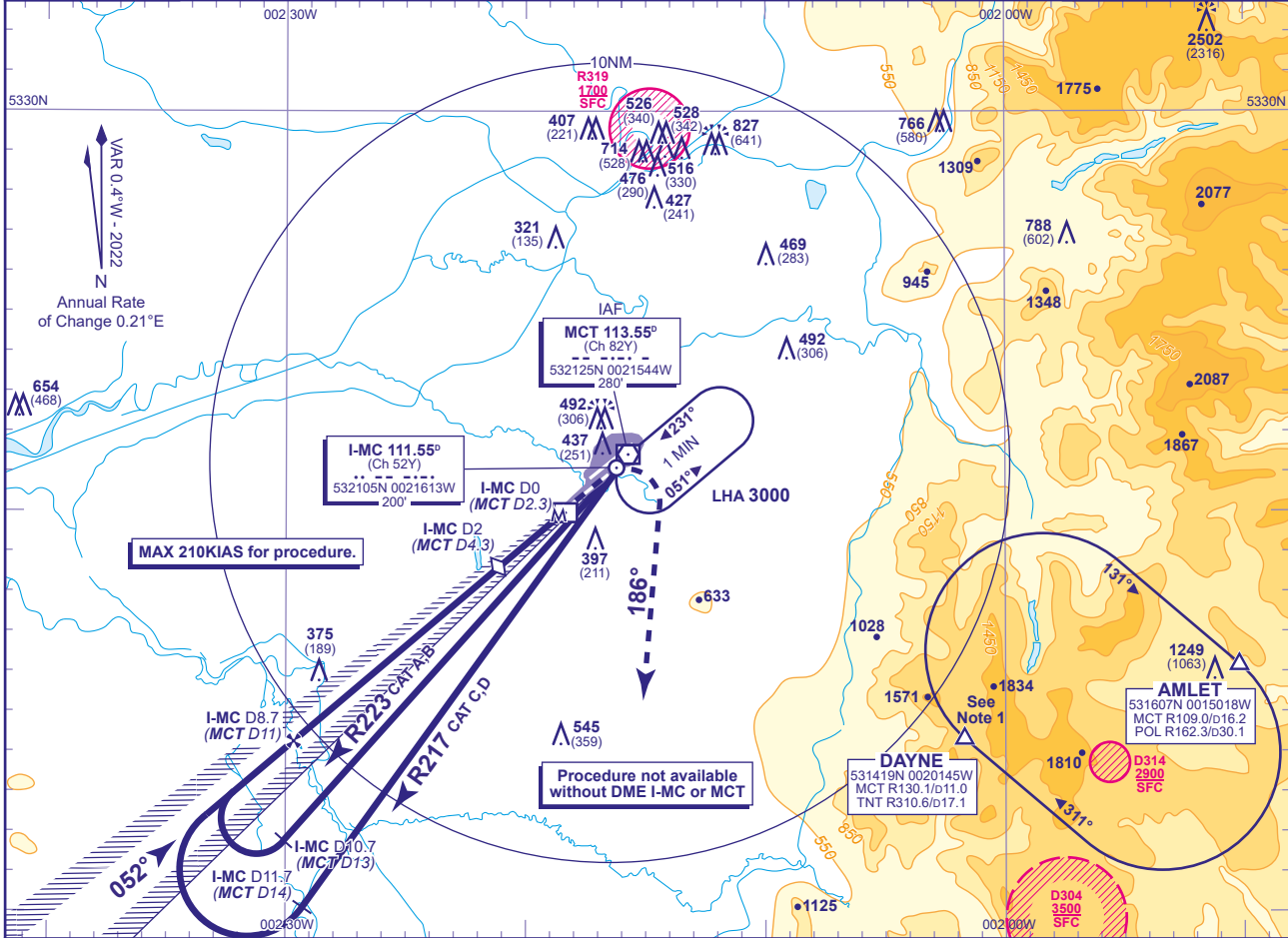
INSTRUMENT APPROACH CHART - ICAO

MANCHESTER
LOC/DME (I-MC)
RWY 05R
(ACFT CAT A,B,C,D)



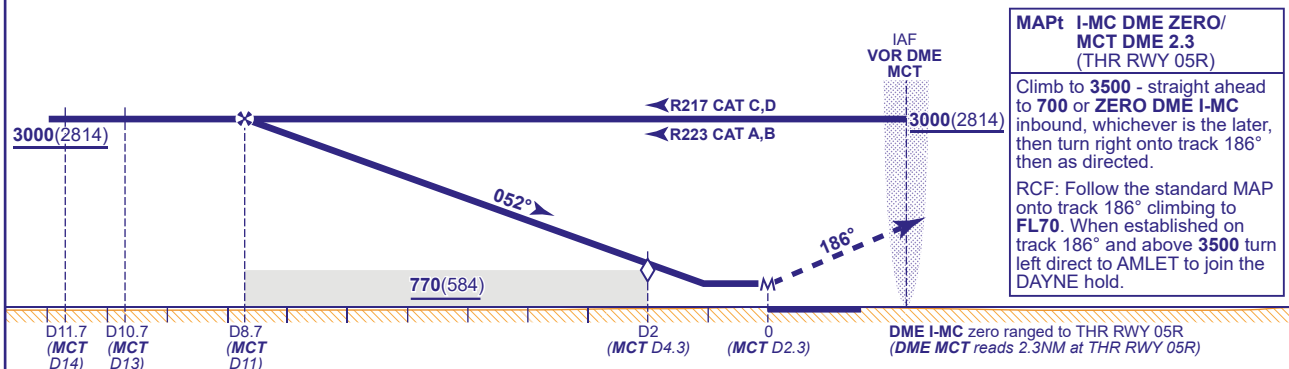
APP	118.580, 135.005	MANCHESTER RADAR	AD ELEVATION	257
	121.355	MANCHESTER DIRECTOR	THR ELEVATION	186
TWR	118.630, 119.405	MANCHESTER TOWER	OBSTACLE ELEVATION	2502 AMSL (2316) (ABOVE THR)
	121.855, 121.705	MANCHESTER GROUND		
ARRIVAL ATIS	128.180	MANCHESTER INFORMATION	BEARINGS ARE MAGNETIC	

TRANSITION ALTITUDE
5000



RECOMMENDED PROFILE Gradient 5.2%, 320FT/NM

DME I-MC(MCT)	8(10.3)	7(9.3)	6(8.3)	5(7.3)	4(6.3)	3(5.3)	2(4.3)(SDF)	1(3.3)
ALT(HGT)	2780(2594)	2460(2274)	2140(1954)	1820(1634)	1510(1324)	1190(1004)	870(684)	550(364)



MAPt I-MC DME ZERO/ MCT DME 2.3 (THR RWY 05R)

Climb to **3500** - straight ahead to **700** or **ZERO DME I-MC** inbound, whichever is the later, then turn right onto track **186°** then as directed.

RCF: Follow the standard MAP onto track **186°** climbing to **FL70**. When established on track **186°** and above **3500** turn left direct to **AMLET** to join the **DAYNE** hold.

Aircraft Category		A	B	C	D	Rate of descent	G/S KT	160	140	120	100	80
OCA (OCH)	Procedure	530(344)	530(344)	530(344)	530(344)		FT/MIN	850	750	640	530	420
VM(C)OCA (OCH AAL)	Total Area	790(533)	820(563)	1110(853)	1110(853)							

NOTE 1 DAYNE HOLD:- Limiting outbound distance MCT DME 16/TNT DME 14. Minimum holding level is FL70.
NOTE 2 Procedure restricted to maximum 210KIAS.

CHANGE (10/24): MOCA REVISED.