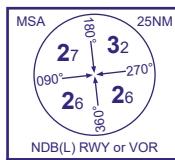


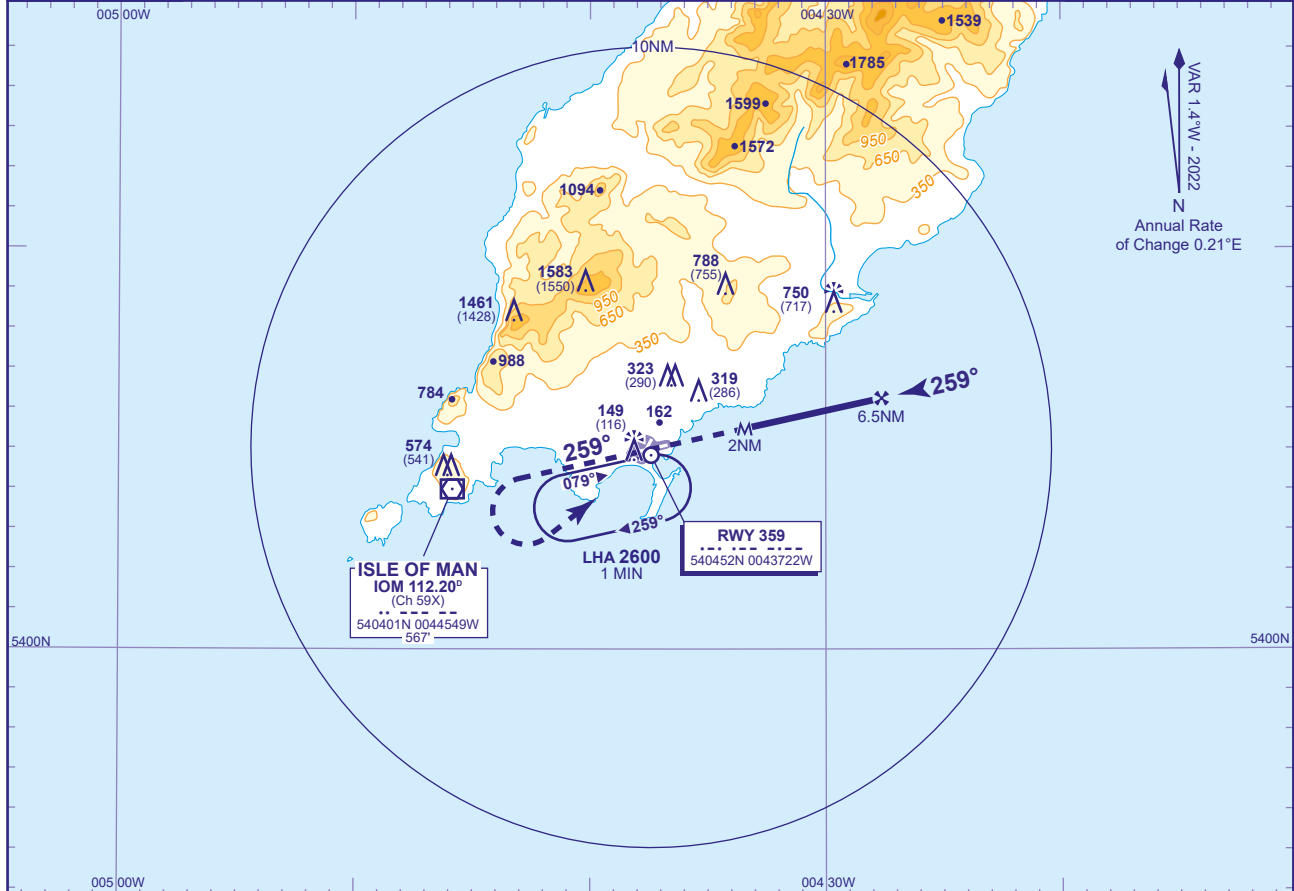
INSTRUMENT APPROACH CHART - ICAO

ISLE OF MAN SRA RTR 2NM RWY 26 (ACFT CAT A,B,C,D)



APP	135.905	RONALDSWAY APPROACH	AD ELEVATION	53
TWR	119.005	RONALDSWAY TOWER	THR ELEVATION	33
RAD	135.905, 120.855, 125.305	RONALDSWAY RADAR	OBSTACLE ELEVATION	1583 AMSL (1550) (ABOVE THR)
ATIS	123.880	RONALDSWAY INFORMATION	BEARINGS ARE MAGNETIC	

TRANSITION ALTITUDE
3000

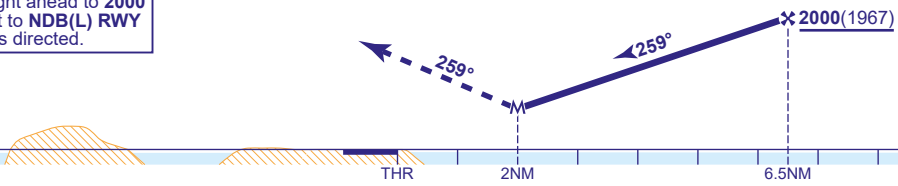


RADAR ADVISORY HEIGHTS Gradient 4.98%, 303FT/NM

NM	6.0	5.0	4.0	3.0	2.0
ALT(HGT)	1850(1817)	1550(1517)	1240(1207)	940(907)	640(607)

Initial and intermediate approach as directed by radar.

MAPt RTR 2NM
Continuous climb to 3000, initially straight ahead to 2000 then turn left to NDB(L) RWY at 3000 or as directed.



Aircraft Category		A	B	C	D	Rate of descent	G/S KT	160	140	120	100	80
OCA (OCH)		Procedure	640(607)	640(607)	640(607)		640(607)	FT/MIN	860	750	640	540
VM(C)OCA (OCH AAL)	Total Area	660(607)	780(727)	1990(1937)	1990(1937)							
	South of RWY 08/26	660(607)	780(727)	1320(1267)	1390(1337)							
	East of RWY 03/21	660(607)	780(727)	1320(1267)	1390(1337)							

NOTE Aircraft will normally be required to hold not lower than 3000.

CHANGE (9/24): AD ELEVATION. MINIMA.