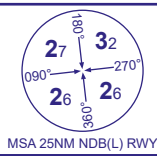


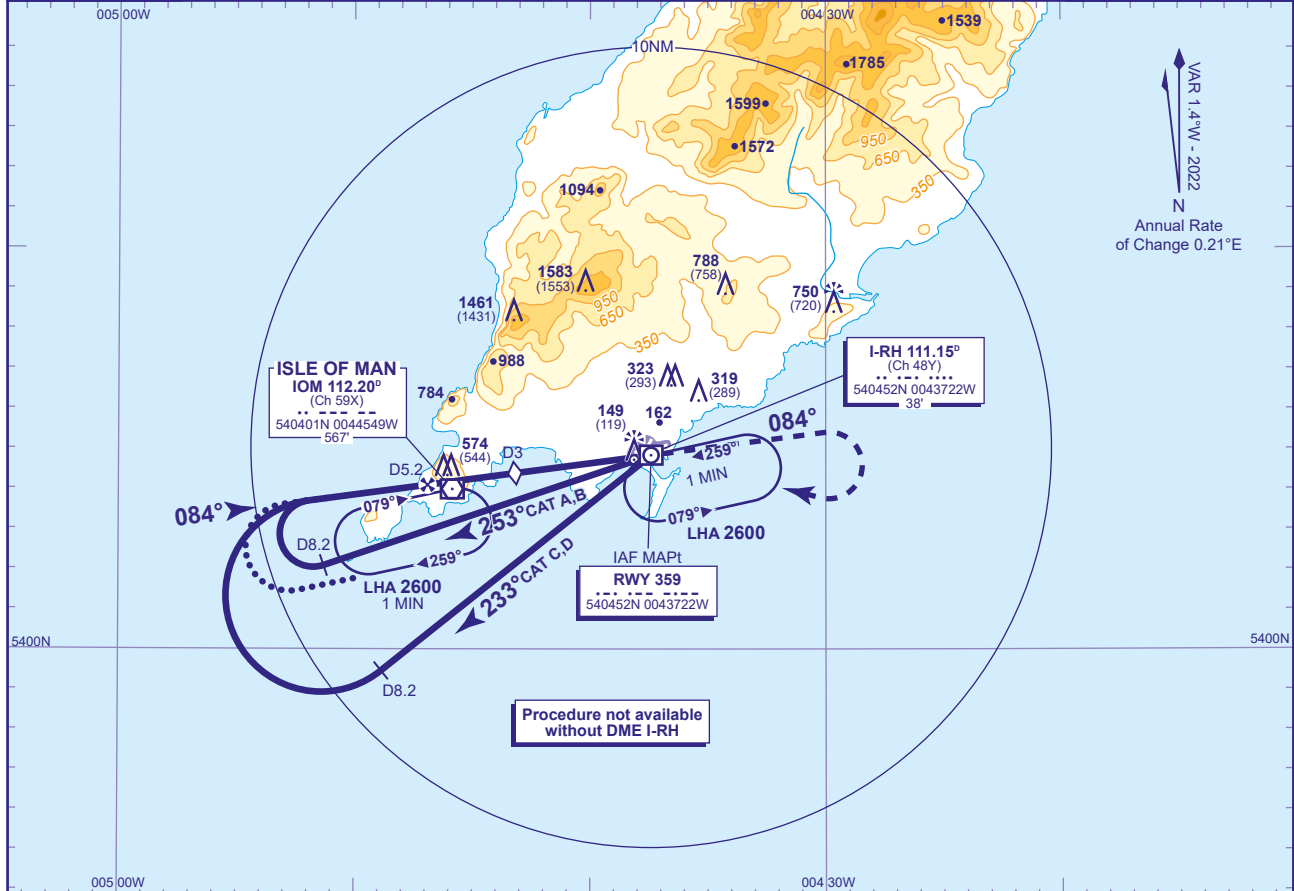
ISLE OF MAN NDB(L)/DME RWY 08 (ACFT CAT A,B,C,D)

ISLE OF MAN NDB(L)/DME RWY 08 (ACFT CAT A,B,C,D)



APP	135.905	RONALDSWAY APPROACH	AD ELEVATION	53
TWR	119.005	RONALDSWAY TOWER	THR ELEVATION	30
RAD	135.905, 120.855, 125.305	RONALDSWAY RADAR	OBSTACLE ELEVATION	1583 AMSL (1553) (ABOVE THR)
ATIS	123.880	RONALDSWAY INFORMATION	BEARINGS ARE MAGNETIC	

TRANSITION ALTITUDE
3000



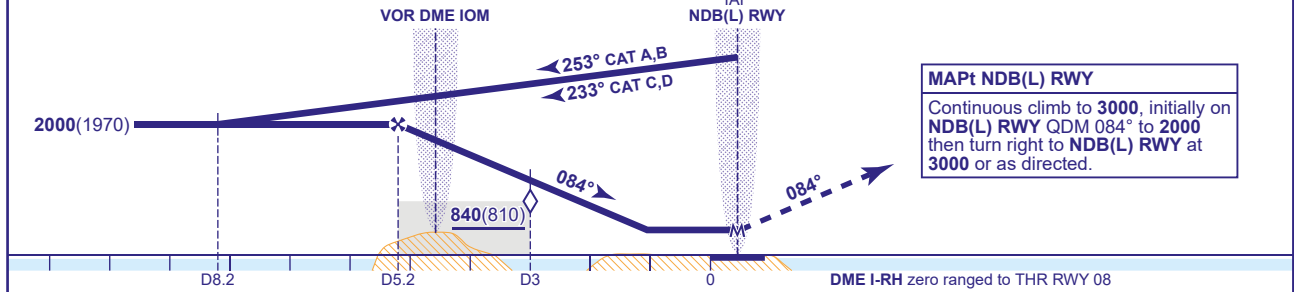
VAR 1.4°W - 2022
N
Annual Rate of Change 0.21°E

Procedure not available without DME I-RH

RECOMMENDED PROFILE Gradient 6.08%, 370FT/NM

DME I-RH	5	4	3 (SDF)	2	1
ALT(HGT)	1930(1900)	1560(1530)	1190(1160)	820(790)	450(420)

Arrival not below 3000 or MSA whichever is the higher.



Aircraft Category		A	B	C	D	Rate of descent	G/S KT	160	140	120	100	80
							FT/MIN	990	860	740	620	490
OCA (OCH)	Procedure	450(420)	450(420)	450(420)	450(420)							
VM(C)OCA (OCH AAL)	Total Area	660(607)	780(727)	1990(1937)	1990(1937)							
	South of RWY 08/26	660(607)	780(727)	1320(1267)	1390(1337)							
	East of RWY 03/21	660(607)	780(727)	1320(1267)	1390(1337)							

ALTERNATIVE PROCEDURE EXTENDED HOLDING PATTERN
From IOM VOR holding pattern, extend the outbound leg descending to 2000(1970). At I-RH DME 9 turn right to establish on the FAT then continue as for full procedure.

NOTE 1 Aircraft will normally be required to hold not lower than 3000.
NOTE 2 FAT offset 5° from RWY 08 C/L and intercepts nominally 1.2NM before THR.

CHANGE (9/24): AD AND THR ELEVATION. MINIMA.