

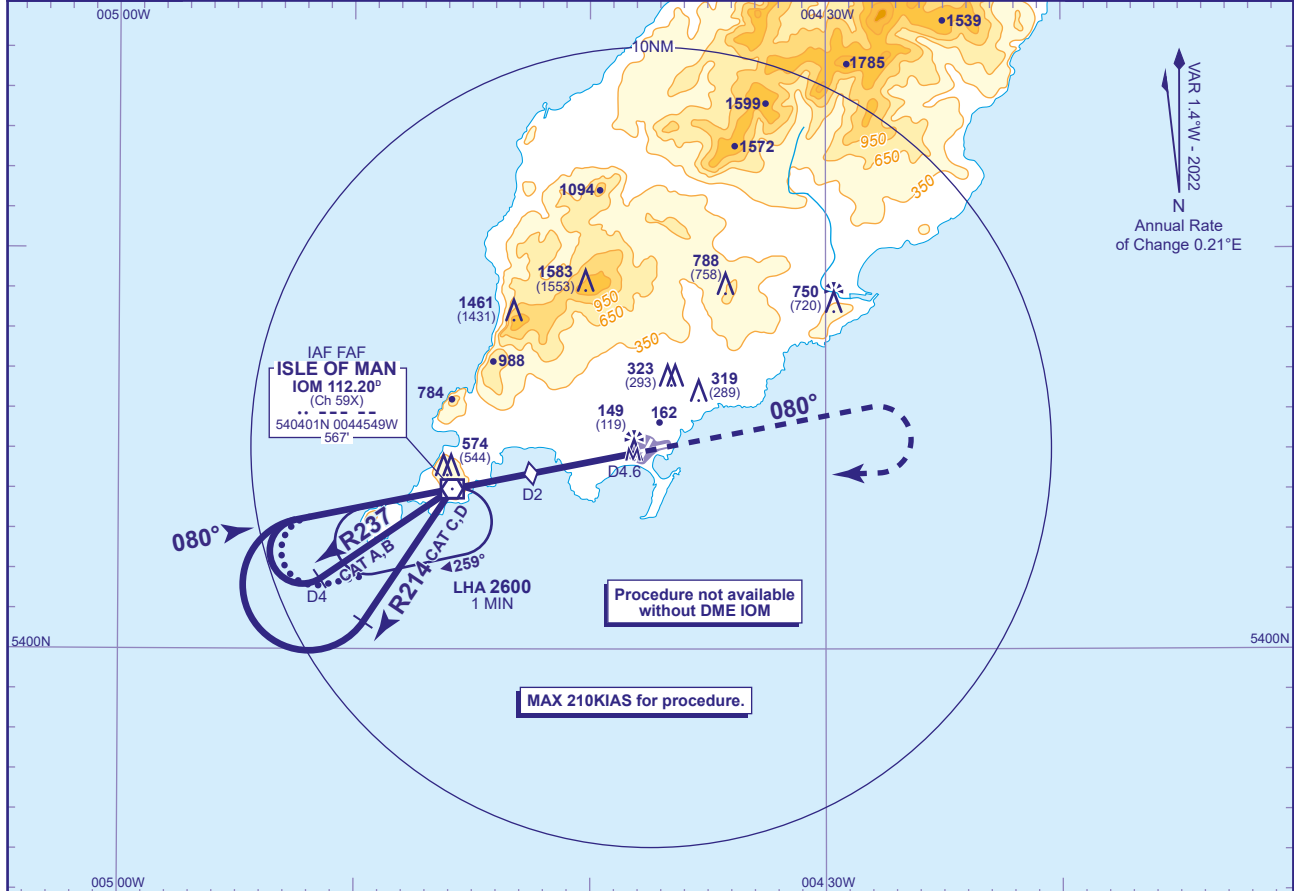
ISLE OF MAN VOR/DME RWY 08 (ACFT CAT A,B,C,D)

ISLE OF MAN
VOR/DME
RWY 08
(ACFT CAT A,B,C,D)



APP	135.905	RONALDSWAY APPROACH	AD ELEVATION	53
TWR	119.005	RONALDSWAY TOWER	THR ELEVATION	30
RAD	135.905, 120.855, 125.305	RONALDSWAY RADAR	OBSTACLE ELEVATION	1583 AMSL (1553) (ABOVE THR)
ATIS	123.880	RONALDSWAY INFORMATION	BEARINGS ARE MAGNETIC	

TRANSITION ALTITUDE
3000

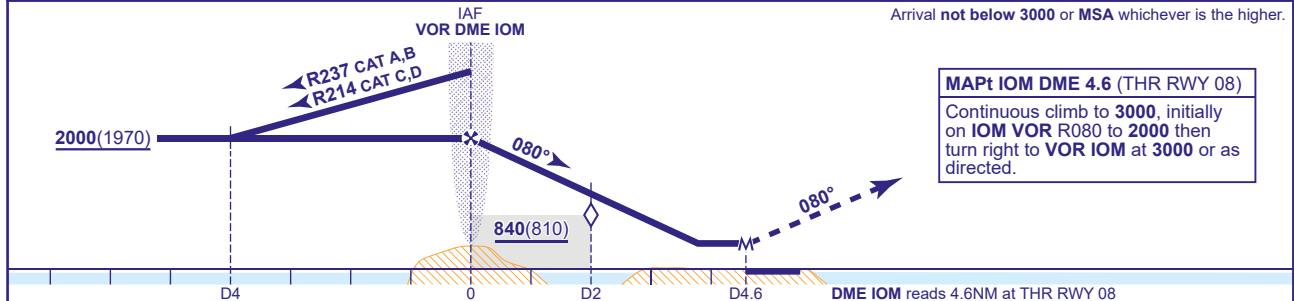


VAR 1.4°W - 2022
N
Annual Rate of Change 0.21°E

RECOMMENDED PROFILE Gradient 6.81%, 414FT/NM

DME IOM	IOM VOR	1	2 (SDF)	3
ALT(HGT)	2000(1970)	1590(1560)	1170(1140)	760(730)

Arrival not below 3000 or MSA whichever is the higher.



Aircraft Category		A	B	C	D	Rate of descent	G/S KT	160	140	120	100	80
OCA (OCH)	Procedure	430(400)	430(400)	430(400)	430(400)		FT/MIN	1100	970	830	690	550
VM(C)OCA (OCH AAL)	Total Area	660(607)	780(727)	1990(1937)	1990(1937)							
	South of RWY 08/26	660(607)	780(727)	1320(1267)	1390(1337)							
	East of RWY 03/21	660(607)	780(727)	1320(1267)	1390(1337)							

ALTERNATIVE PROCEDURE EXTENDED HOLDING PATTERN
From IOM VOR holding pattern, extend the outbound leg descending to 2000(1970). At IOM DME 4 turn right to intercept the FAT inbound. When established continue as for basic procedure.

NOTE 1 Aircraft will normally be required to hold not lower than 3000.
2 FAT offset 1° from RWY 08 C/L.

WARNING This procedure is based upon the VOR/DME IOM, which is situated 4.6NM west of the aerodrome. All ranges are relative to the VOR/DME IOM and **DO NOT PROVIDE RANGES TO THRESHOLD**. Terrain and obstacles are present in the vicinity of VOR/DME IOM, **DO NOT DESCEND BELOW PROCEDURE MINIMUM ALT/HGT**.

CHANGE (9/24): AD AND THR ELEVATION. MINIMA.