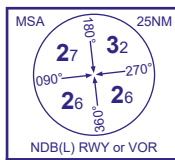


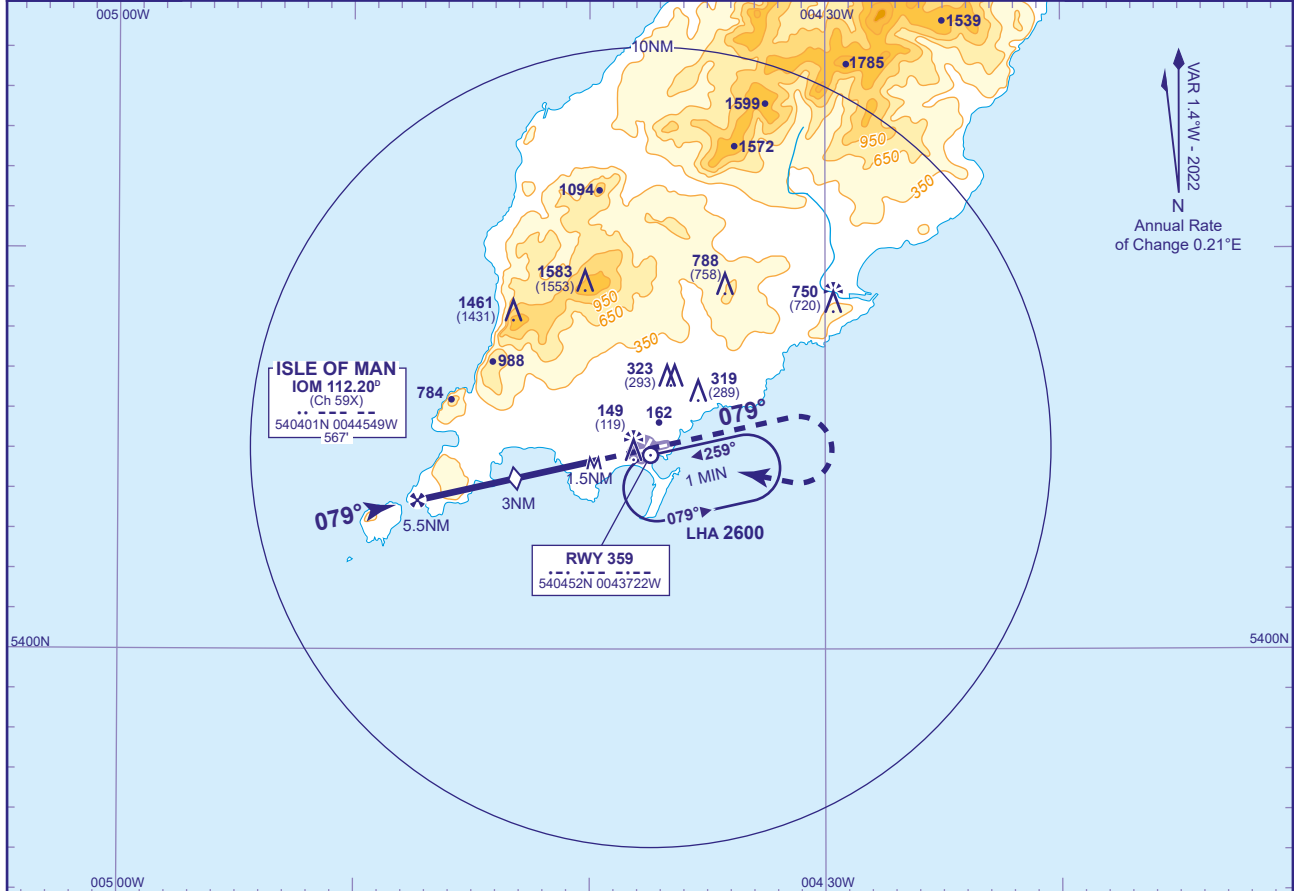
INSTRUMENT APPROACH CHART - ICAO

ISLE OF MAN SRA RTR 2NM RWY 08 (ACFT CAT A,B,C,D)



APP	135.905	RONALDSWAY APPROACH	AD ELEVATION	53
TWR	119.005	RONALDSWAY TOWER	THR ELEVATION	30
RAD	135.905, 120.855, 125.305	RONALDSWAY RADAR	OBSTACLE ELEVATION	1583 AMSL (1553) (ABOVE THR)
ATIS	123.880	RONALDSWAY INFORMATION	BEARINGS ARE MAGNETIC	

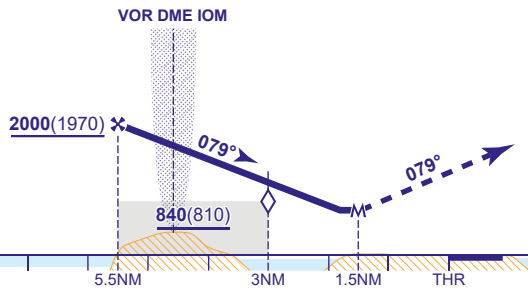
TRANSITION ALTITUDE
3000



RADAR ADVISORY HEIGHTS Gradient 5.90%, 358FT/NM

NM	5.0	4.0	3.0 (SDF)	2.0
ALT(HGT)	1820(1790)	1460(1430)	1100(1070)	750(720)

Initial and intermediate approach by radar.



MAPt 0.5NM after RTR
Continuous climb to 3000 initially straight ahead to 2000 then right turn to NDB(L) RWY at 3000 or as directed.

Aircraft Category	A	B	C	D	Rate of descent	G/S KT	160	140	120	100	80	
OCA (OCH)	630(600)	630(600)	630(600)	630(600)		FT/MIN	960	840	720	600	480	
VM(C)OCA (OCH AAL)	Procedure	630(600)	630(600)	630(600)	RTR to MAPt	MIN:SEC	0:11	0:13	0:15	0:18	0:23	
	Total Area	660(607)	780(727)	1990(1937)		1990(1937)						
	South of RWY 08/26	660(607)	780(727)	1320(1267)		1390(1337)						
	East of RWY 03/21	660(607)	780(727)	1320(1267)	1390(1337)							

NOTE Aircraft will normally be required to hold not lower than 3000.

CHANGE (9/24): AD AND THR ELEVATION. MINIMA.