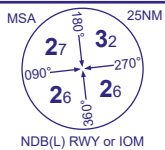


INSTRUMENT APPROACH CHART - ICAO

ISLE OF MAN OFFSET LOC/DME RWY 08 (ACFT CAT A,B,C,D)



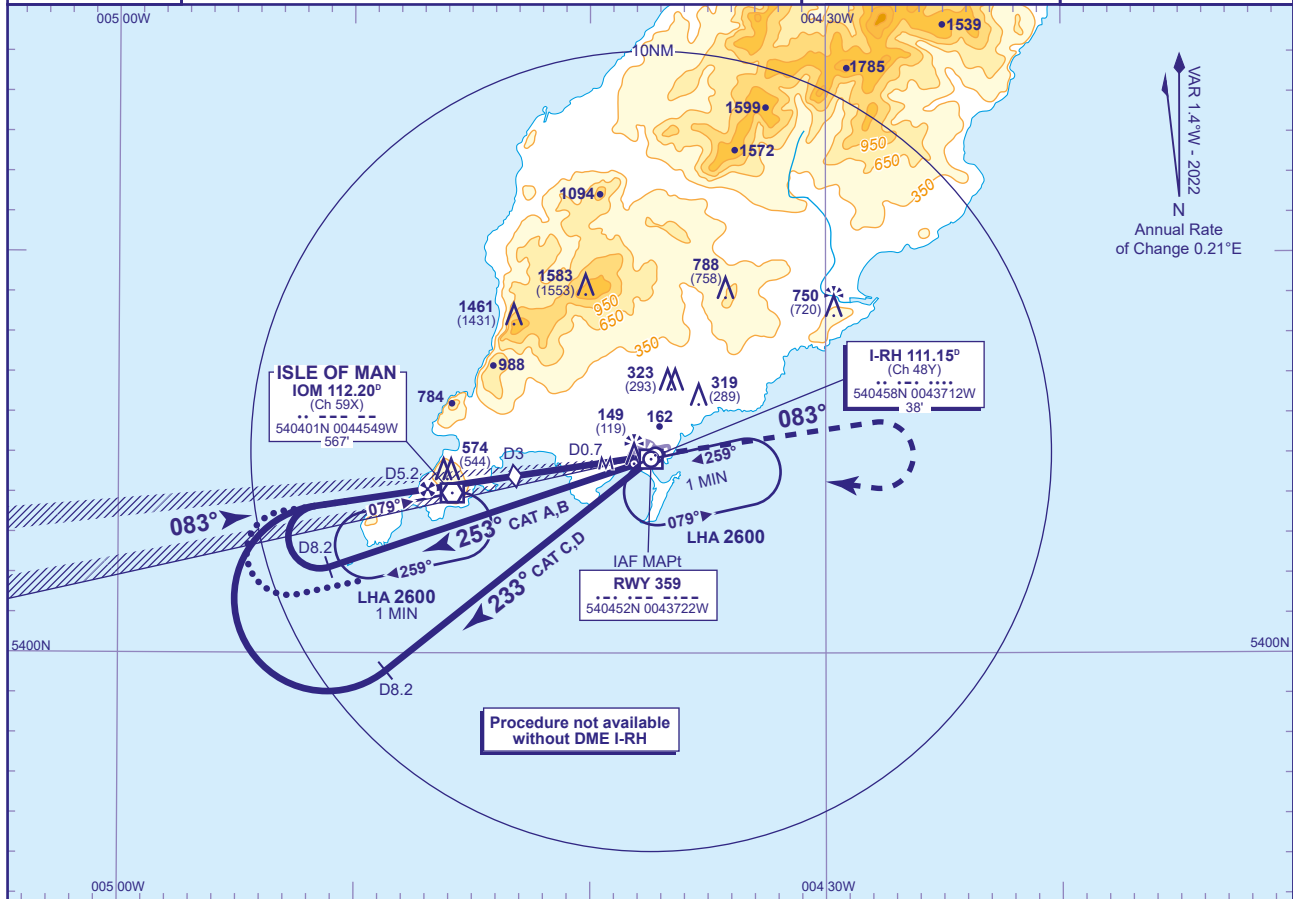
APP	135.905
TWR	119.005
RAD	135.905, 120.855, 125.305
ATIS	123.880

RONALDSWAY APPROACH
RONALDSWAY TOWER
RONALDSWAY RADAR
RONALDSWAY INFORMATION

AD ELEVATION	53
THR ELEVATION	30
OBSTACLE ELEVATION	1583 AMSL (1553) (ABOVE THR)

TRANSITION ALTITUDE
3000

BEARINGS ARE MAGNETIC

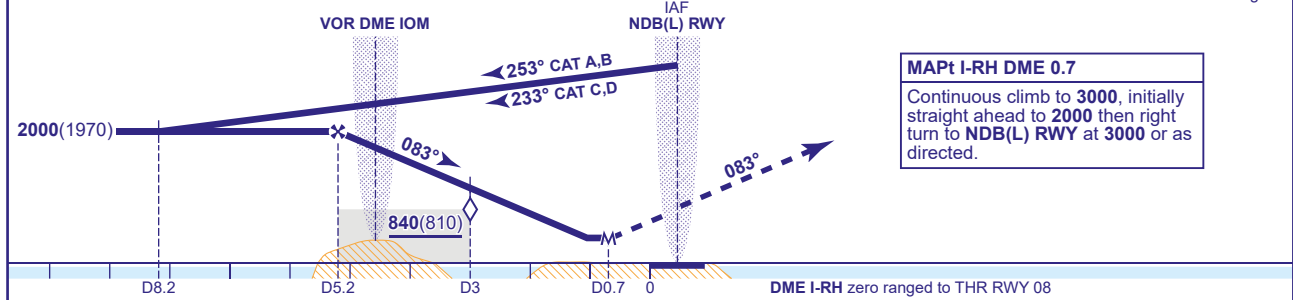


VAR 1.4°W - 2022
N
Annual Rate of Change 0.21°E

RECOMMENDED PROFILE Gradient 6.12%, 372FT/NM

DME I-RH	5	4	3 (SDF)	2	1
ALT(HGT)	1940(1910)	1570(1540)	1190(1160)	820(790)	450(420)

Arrival not below 3000 or MSA whichever is the higher.



Aircraft Category		A	B	C	D	Rate of descent	G/S KT	160	140	120	100	80
OCA (OCH)		Procedure	380(350)	380(350)	380(350)		380(350)	FT/MIN	990	870	740	620
VM(C)OCA (OCH AAL)	Total Area	660(607)	780(727)	1990(1937)	1990(1937)							
	South of RWY 08/26	660(607)	780(727)	1320(1267)	1390(1337)							
	East of RWY 03/21	660(607)	780(727)	1320(1267)	1390(1337)							

ALTERNATIVE PROCEDURE EXTENDED HOLDING PATTERN
From IOM VOR holding pattern, extend the outbound leg descending to 2000(1970). At I-RH DME 9 turn right to establish on the localizer inbound. When established continue as for full procedure.

NOTE 1 Aircraft will normally be required to hold not lower than 3000.
2 FAT offset 3.77° north of RWY 08 C/L.

CHANGE (9/24): AD AND THR ELEVATION. MINIMA.