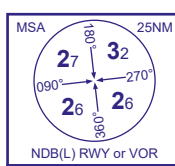


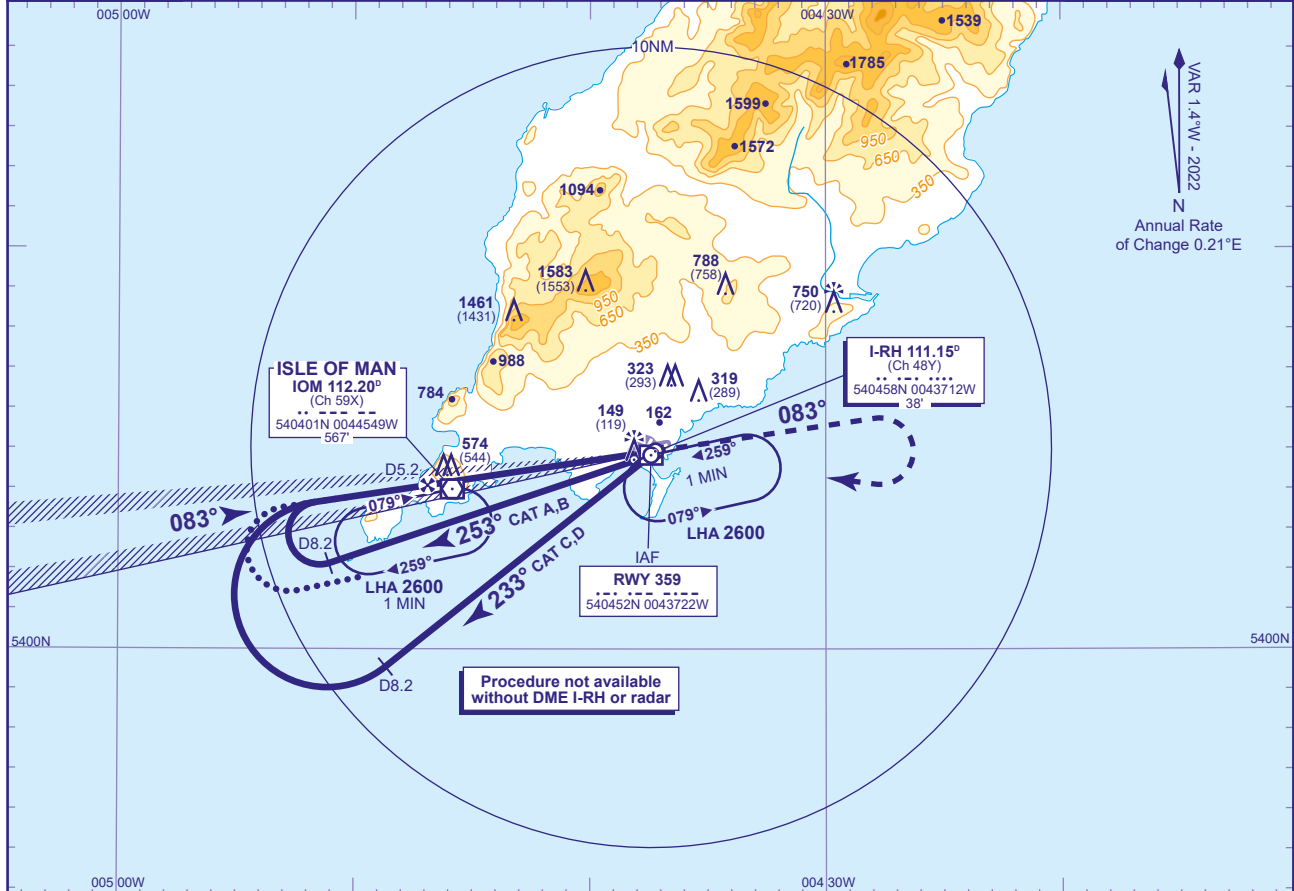
INSTRUMENT APPROACH - ICAO

ISLE OF MAN OFFSET ILS/DME RWY 08 (ACFT CAT A,B,C,D)



APP	135.905	RONALDSWAY APPROACH	AD ELEVATION	53
TWR	119.005	RONALDSWAY TOWER	THR ELEVATION	30
RAD	135.905, 120.855, 125.305	RONALDSWAY RADAR	OBSTACLE ELEVATION	1583 AMSL (1553) (ABOVE THR)
ATIS	123.880	RONALDSWAY INFORMATION	BEARINGS ARE MAGNETIC	

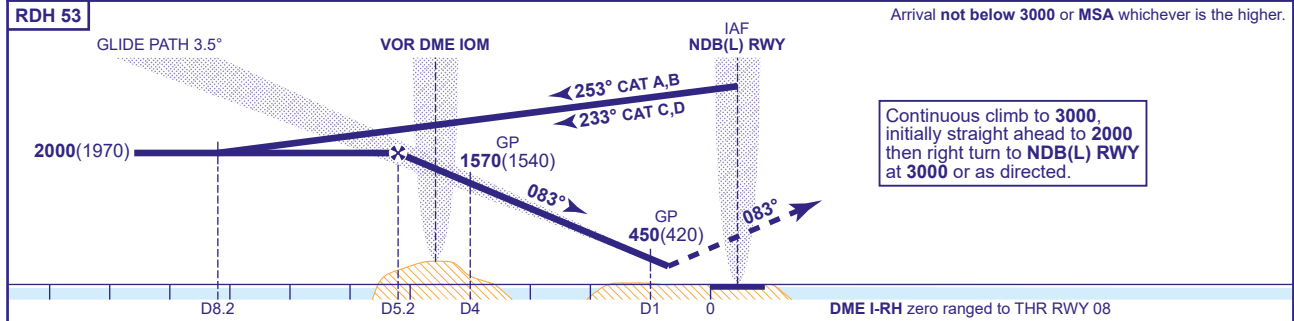
TRANSITION ALTITUDE
3000



VAR 1.4°W - 2022
N
Annual Rate of Change 0.21°E

RECOMMENDED PROFILE GLIDE PATH 3.5°, 372FT/NM

DME I-RH	5	4	3	2	1
ALT(HGT)	1940(1910)	1570(1540)	1190(1160)	820(790)	450(420)



Aircraft Category	A	B	C	D	Rate of descent	G/S KT	160	140	120	100	80
						FT/MIN	990	870	740	620	500
OCA (OCH)	CAT I	322(292)	322(292)	322(292)	323(293)						
VM(C)OCA (OCH AAL)	Total Area	660(607)	780(727)	1990(1937)	1990(1937)						
	South of RWY 08/26	660(607)	780(727)	1320(1267)	1390(1337)						
	East of RWY 03/21	660(607)	780(727)	1320(1267)	1390(1337)						

ALTERNATIVE PROCEDURE EXTENDED HOLDING PATTERN
From IOM VOR holding pattern, extend the outbound leg descending to **2000(1970)**. At I-RH DME 9 turn right to establish on the localizer inbound. When established continue as for Full Procedure.

AIRCRAFT UNABLE TO RECEIVE DME I-RH
Advise ATC . Radar Ranges will be passed at 8.2NM outbound and 4NM inbound.

NOTE 1 Aircraft will normally be required to hold not lower than **3000**.
2 FAT offset 3.77° north of RWY 08 C/L.

CHANGE (9/24): AD AND THR ELEVATION. MINIMA.