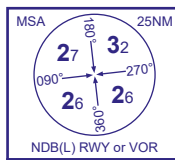


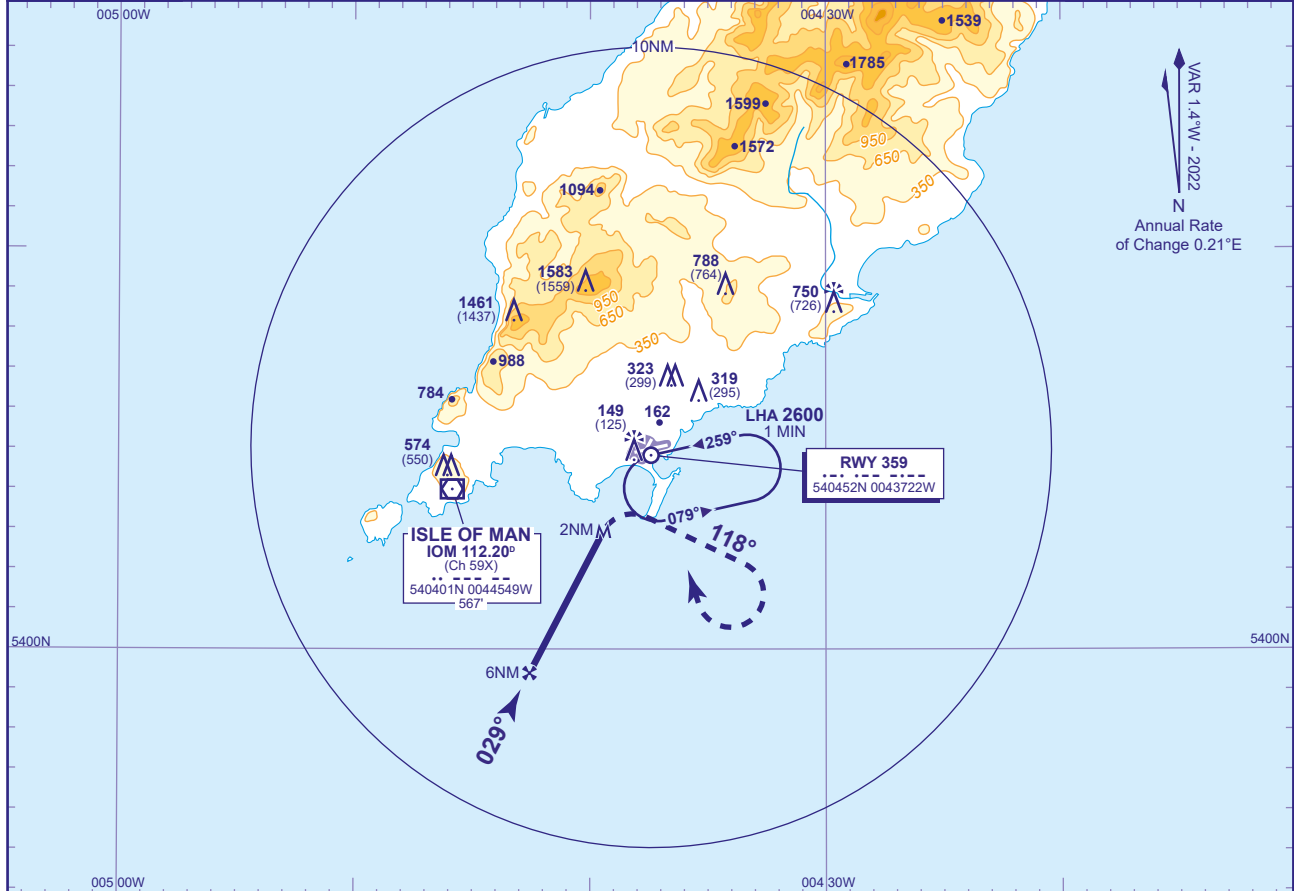
ISLE OF MAN SRA RTR 2NM RWY 03

ISLE OF MAN
SRA RTR 2NM
RWY 03
(ACFT CAT A,B,C,D)



APP	135.905	RONALDSWAY APPROACH	AD ELEVATION	53
TWR	119.005	RONALDSWAY TOWER	THR ELEVATION	24
RAD	135.905, 120.855, 125.305	RONALDSWAY RADAR	OBSTACLE ELEVATION	1583 AMSL (1559) (ABOVE THR)
ATIS	123.880	RONALDSWAY INFORMATION	BEARINGS ARE MAGNETIC	

TRANSITION ALTITUDE
3000

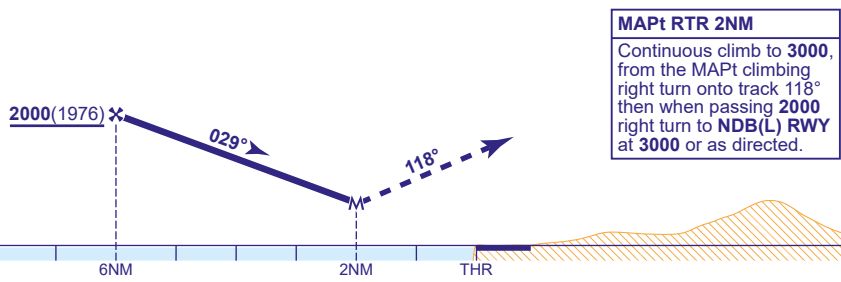


VAR 1.4°W - 2022
N
Annual Rate of Change 0.21°E

RADAR ADVISORY HEIGHTS Gradient 5.42%, 329FT/NM

NM	5.0	4.0	3.0	2.0
ALT(HGT)	1670(1646)	1340(1316)	1010(986)	680(656)

Initial and intermediate approach as directed by radar.



Aircraft Category	A	B	C	D	Rate of descent	G/S KT	160	140	120	100	80
OCA (OCH)	Procedure	680(656)	680(656)	680(656)	680(656)	FT/MIN	880	770	660	550	440
VM(C)OCA (OCH AAL)	Total Area	680(627)	780(727)	1990(1937)	1990(1937)						
	South of RWY 08/26	680(627)	780(727)	1320(1267)	1390(1337)						
	East of RWY 03/21	680(627)	780(727)	1320(1267)	1390(1337)						

NOTE Aircraft will normally be required to hold not lower than 3000.

CHANGE (9/24): AD ELEVATION. MINIMA.