

INSTRUMENT APPROACH CHART - ICAO

LONDON HEATHROW

RNP

RWY 27R

(ACFT CAT A,B,C,D)

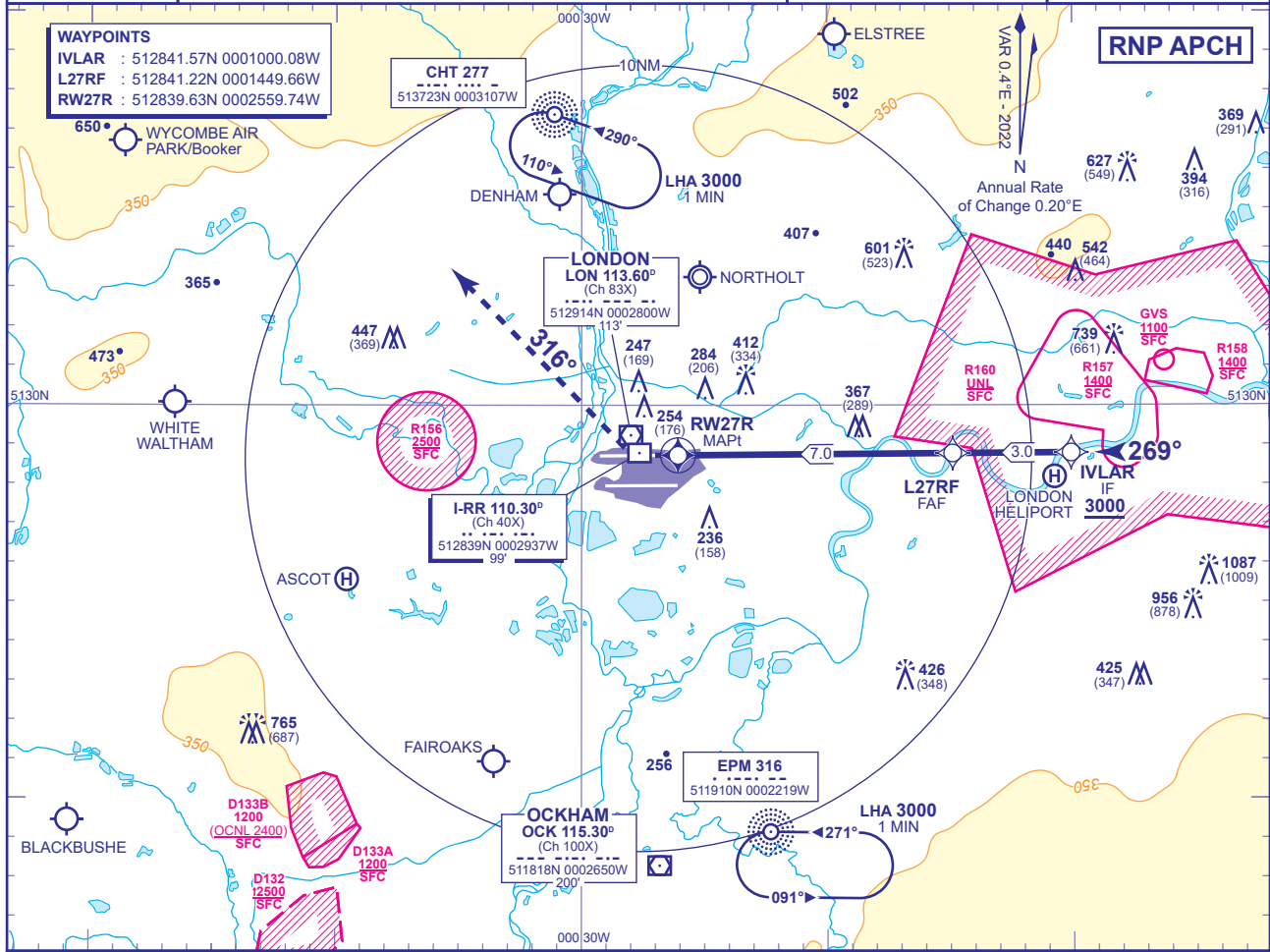
23
MSA 25NM ARP

APP 119.730, 120.400, 127.525, 134.980	HEATHROW DIRECTOR	AD ELEVATION	83
TWR 118.505, 118.705, 124.475	HEATHROW TOWER	THR ELEVATION	78
RAD 125.625, 127.525	HEATHROW RADAR	OBSTACLE ELEVATION	1087 AMSL (1009) (ABOVE THR)
ATIS 128.080, 113.750, 117.000	HEATHROW INFORMATION	BEARINGS ARE MAGNETIC	

MIN TEMP -10°C
TRANSITION ALTITUDE 6000

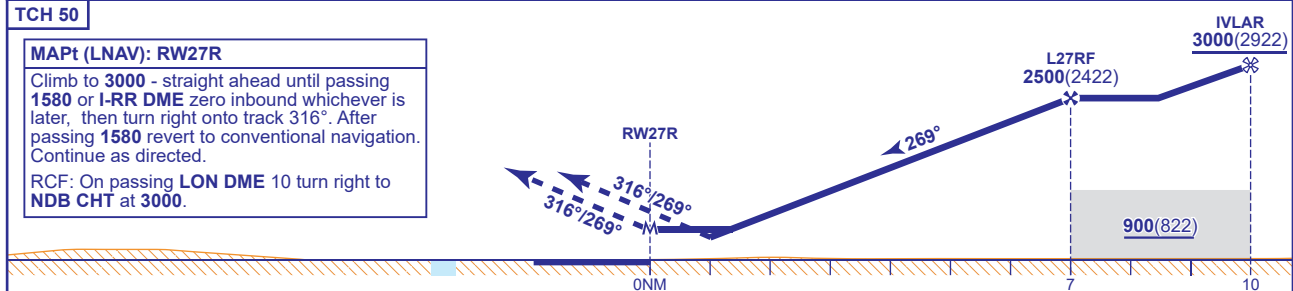
WAYPOINTS
 IVLAR : 512841.57N 0001000.08W
 L27RF : 512841.22N 0001449.66W
 RW27R : 512839.63N 0002559.74W

RNP APCH



RECOMMENDED PROFILE VERTICAL PATH ANGLE 3.2° (5.6%), 340FT/NM

NM to RW27R	6	5	4	3	2
ALT(HGT)	2170(2092)	1830(1752)	1490(1412)	1150(1072)	810(732)



Aircraft Category		A	B	C	D	Rate of descent	G/S KT	160	140	120	100	80
		LNVA/VNAV	380(302)	390(312)	400(322)		440(362)	FT/MIN	910	790	680	570
OCA (OCH)	LNAV	640(562)	640(562)	640(562)	640(562)							
	Total Area	770(687)	770(687)	940(857)	940(857)							

NOTES

- Pilots should 'Request RNP Approach' on first contact with Heathrow Director.
- Aircraft will normally be radar vectored from the STAR Holding/Initial Approach Fixes.
- Pilots should not expect descent clearance below 4000 until 13NM from touchdown.
- Missed Approach Procedure and RCF use conventional navigation aids and are not available without DME I-RR, DME LON and NDB CHT.
- PAPI angle is 3.0°.