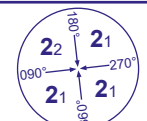


INSTRUMENT APPROACH - ICAO

LONDON HEATHROW

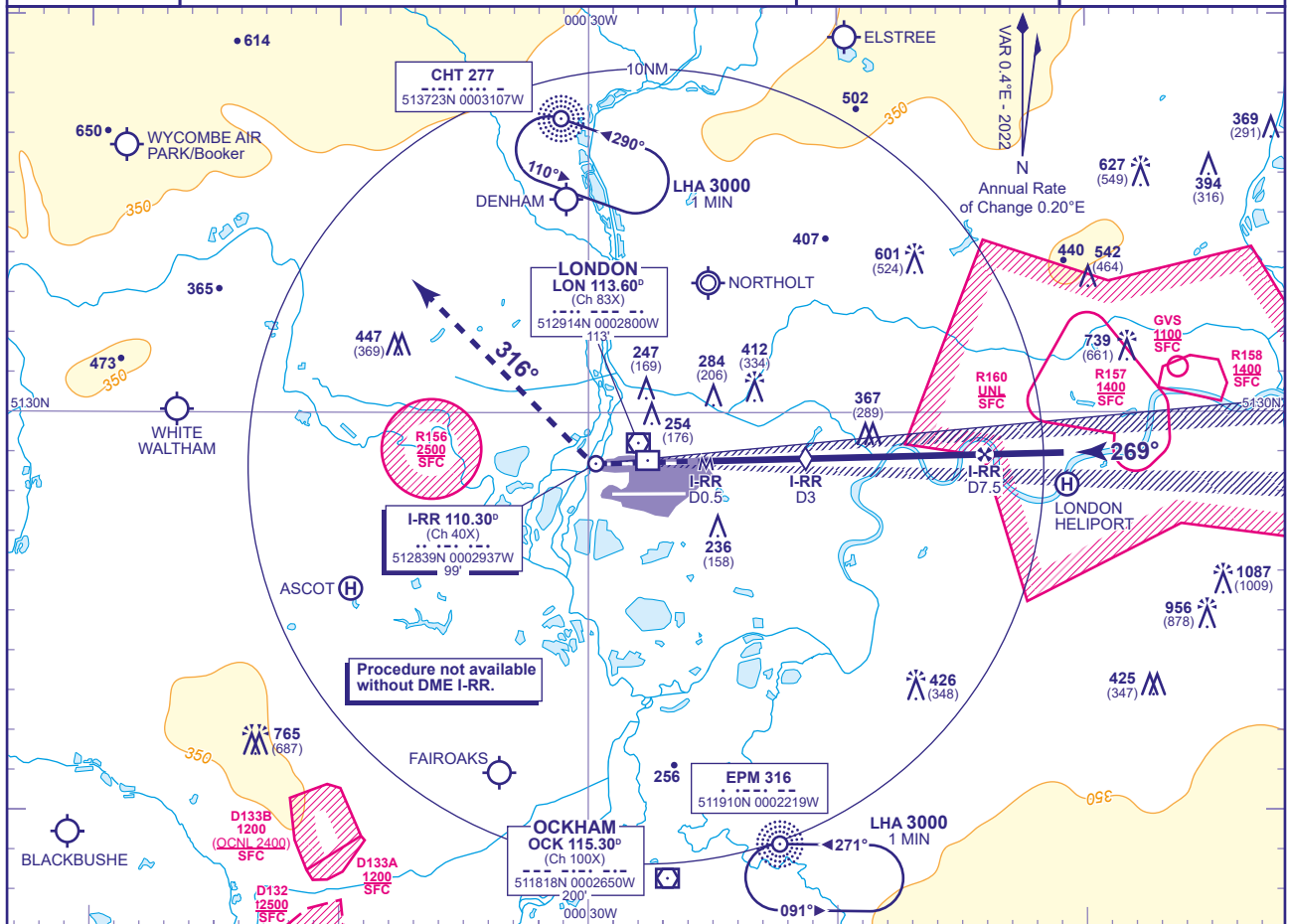
LOC/DME I-RR RWY 27R (ACFT CAT A,B,C,D)



MSA 25NM LON VOR

APP 119.730, 120.400, 127.525, 134.980	HEATHROW DIRECTOR	AD ELEVATION	83
TWR 118.505, 118.705, 124.475	HEATHROW TOWER	THR ELEVATION	78
RAD 125.625, 127.525	HEATHROW RADAR	OBSTACLE ELEVATION	1087 AMSL (1009) (ABOVE THR)
ATIS 128.080, 113.750, 117.000	HEATHROW INFORMATION	BEARINGS ARE MAGNETIC	

TRANSITION ALTITUDE
6000



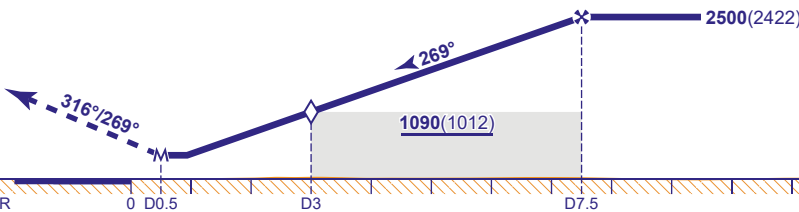
RECOMMENDED PROFILE Gradient 5.2%, 318FT/NM

DME I-RR	7	6	5	4	3 (SDF)	2	1
ALT(HGT)	2370(2292)	2050(1972)	1730(1652)	1410(1332)	1090(1012)	770(692)	450(372)

MAPt I-RR DME 0.5

Climb to 3000 - straight ahead until passing 1580 or I-RR DME zero inbound whichever is later, turn right onto track 316°. Continue as directed.

RADIO FAILURE: On passing LON DME 10 turn right to NDB CHT at 3000.



I-RR DME zero ranged to THR RWY 27R

Aircraft Category		A	B	C	D	Rate of descent	G/S KT				
OCA (OCH)	Procedure	640(562)	640(562)	640(562)	640(562)		FT/MIN	160	140	120	100
VM(C)OCA (OCH AAL)	Total Area	770(687)	770(687)	940(857)	940(857)		850	740	640	530	420

- NOTES 1 Aircraft will normally be radar vectored from the STAR Holding/Initial Approach Fixes.
2 All pilots must follow and adhere to recommended profiles.

CHANGE (7/24): VM(C)OCA(OCH AAL) CAT C/D.