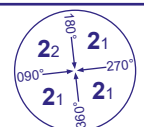


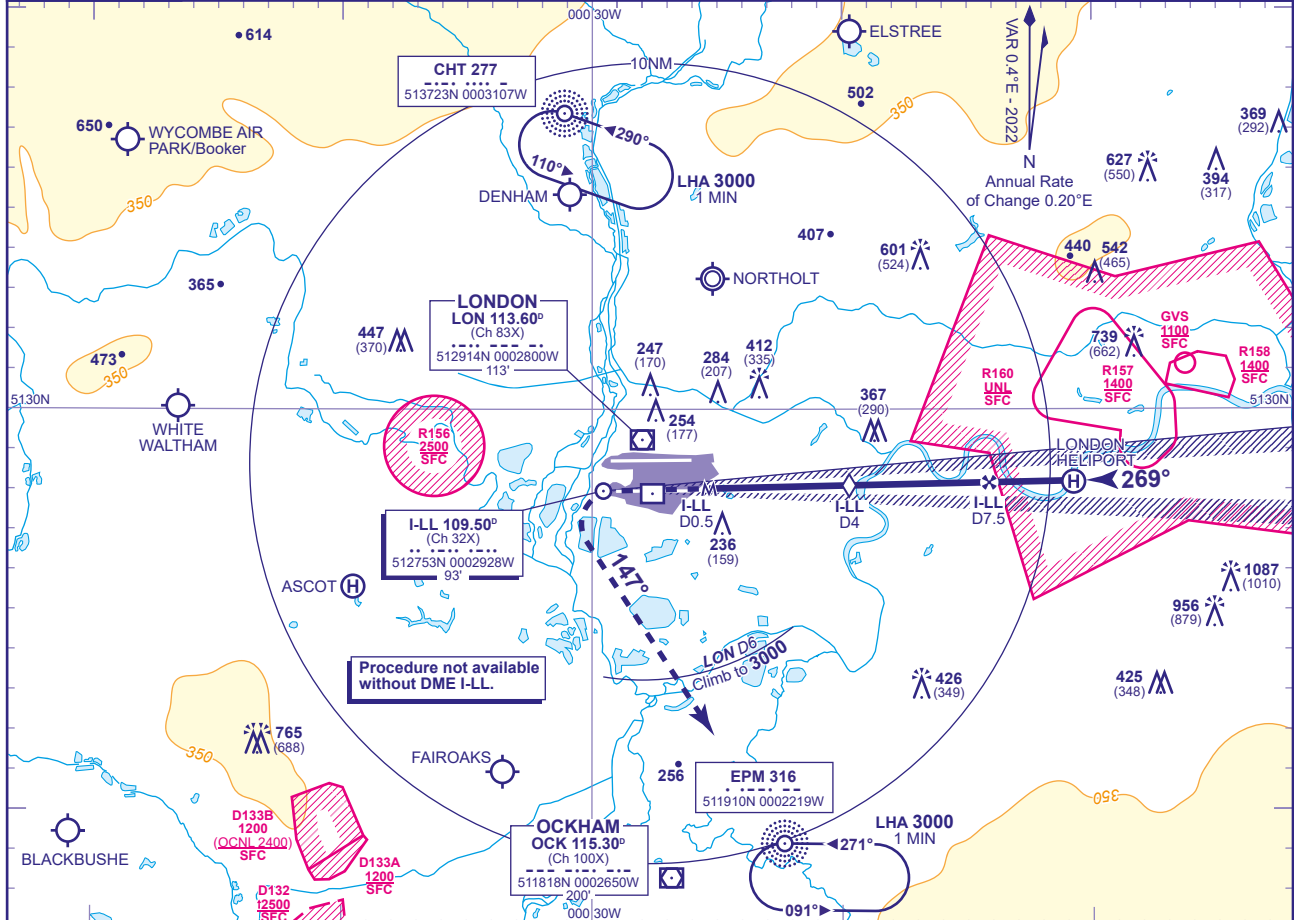
INSTRUMENT APPROACH - ICAO

LONDON HEATHROW

LOC/DME I-LL RWY 27L (ACFT CAT A,B,C,D)



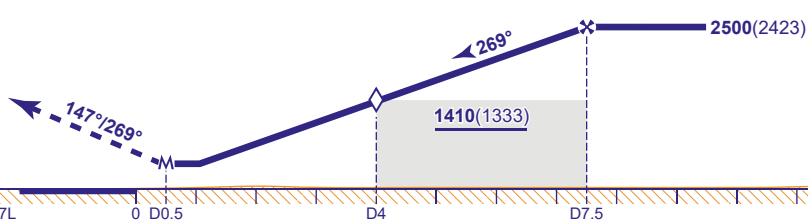
| | | | |
|--|----------------------|-----------------------|---------------------------------|
| APP 119.730, 120.400, 127.525, 134.980 | HEATHROW DIRECTOR | AD ELEVATION | 83 |
| TWR 118.505, 118.705, 124.475 | HEATHROW TOWER | THR ELEVATION | 77 |
| RAD 125.625, 127.525 | HEATHROW RADAR | OBSTACLE ELEVATION | 1087 AMSL (1010) (ABOVE THR) |
| ATIS 128.080, 113.750, 117.000 | HEATHROW INFORMATION | BEARINGS ARE MAGNETIC | TRANSITION ALTITUDE 6000 |



RECOMMENDED PROFILE Gradient 5.2%, 318FT/NM

| | | | | | | |
|----------|------------|------------|------------|------------|------------|----------|
| DME I-LL | 7 | 6 | 5 | 4 (SDF) | 3 | 2 |
| ALT(HGT) | 2360(2283) | 2040(1963) | 1730(1653) | 1410(1333) | 1090(1013) | 770(693) |

MAPt I-LL DME 0.5
 Climb to 2000 - straight ahead until passing 1080 or I-LL DME zero inbound whichever is later, then left onto track 147°. When established and passing LON DME 6 climb to 3000 without delay. Continue as directed.
 RADIO FAILURE: On reaching 3000 proceed to NDB EPM at 3000.



I-LL DME zero ranged to THR RWY 27L 0 D0.5 D4 D7.5

| Aircraft Category | | A | B | C | D | Rate of descent | G/S KT | 160 | 140 | 120 | 100 | 80 |
|--------------------|------------|----------|----------|----------|----------|-----------------|--------|-----|-----|-----|-----|-----|
| OCA (OCH) | Procedure | 640(563) | 640(563) | 640(563) | 640(563) | | FT/MIN | 850 | 740 | 640 | 530 | 420 |
| VM(C)OCA (OCH AAL) | Total Area | 770(687) | 770(687) | 940(857) | 940(857) | | | | | | | |

NOTE Aircraft will normally be radar vectored from the STAR Holding/Initial Approach Fixes.