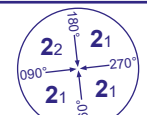


# STANDARDS TERRESTRIAL NAVIGATION - ICAO

# LONDON HEATHROW

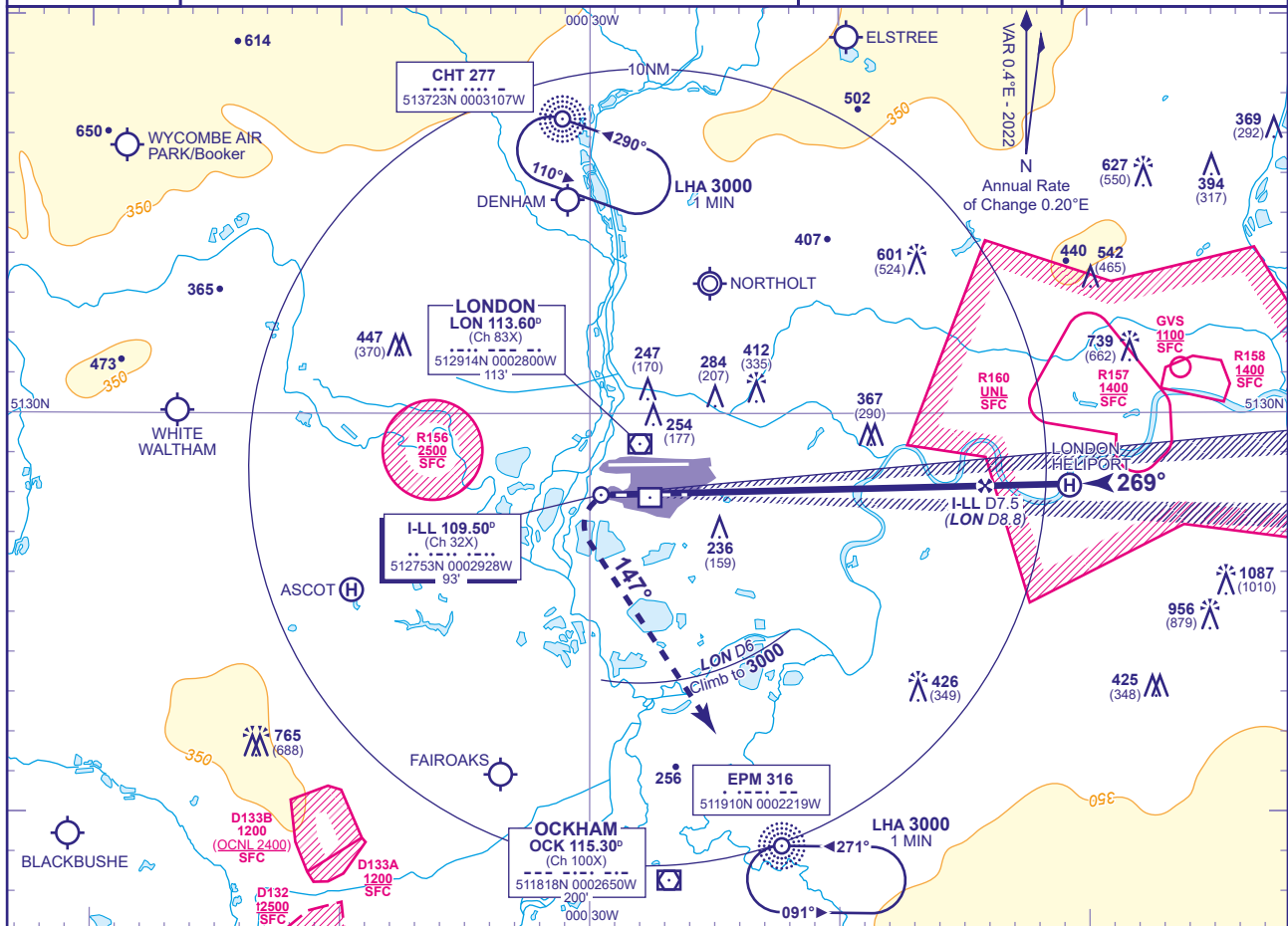
**ILS/DME I-LL  
RWY 27L**  
(ACFT CAT A,B,C,D)



MSA 25NM LON VOR

APP 119.730, 120.400, 127.525, 134.980	HEATHROW DIRECTOR	AD ELEVATION <b>83</b>
TWR 118.505, 118.705, 124.475	HEATHROW TOWER	THR ELEVATION <b>77</b>
RAD 125.625, 127.525	HEATHROW RADAR	OBSTACLE ELEVATION <b>1087 AMSL</b> (1010) (ABOVE THR)
ATIS 128.080, 113.750, 117.000	HEATHROW INFORMATION	BEARINGS ARE MAGNETIC

TRANSITION ALTITUDE  
**6000**

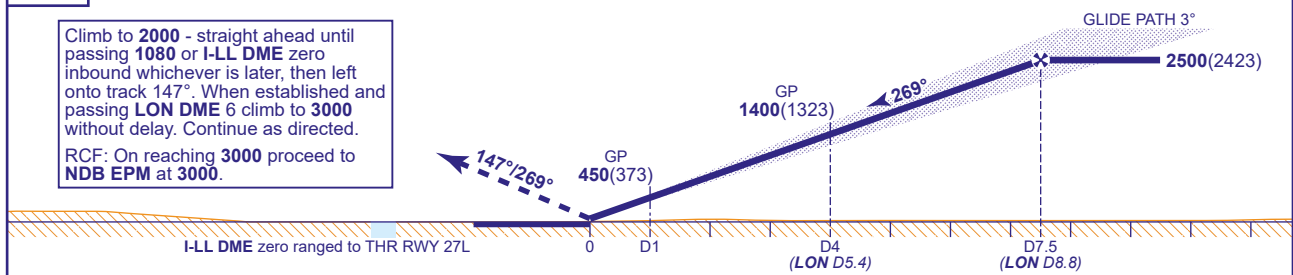


### RECOMMENDED PROFILE GLIDE PATH 3°, 318FT/NM

DME I-LL	7	6	5	4	3	2	1
ALT(HGT)	2360(2283)	2040(1963)	1730(1653)	1410(1333)	1090(1013)	770(693)	450(373)

### RDH 56

Climb to **2000** - straight ahead until passing **1080** or **I-LL DME zero** whichever is later, then left onto track **147°**. When established and passing **LON DME 6** climb to **3000** without delay. Continue as directed.  
RCF: On reaching **3000** proceed to **NDB EPM** at **3000**.



Aircraft Category		Aircraft Category				Rate of descent	Rate of descent				
		A	B	C	D		G/S KT	160	140	120	100
OCA (OCH)	CAT I	229(152)	238(161)	252(175)	270(193)	FT/MIN	850	740	640	530	420
	CAT II	137(60)	146(69)	159(82)	174(97)						
VM(C)OCA (OCH AAL)	Total Area	770(687)	770(687)	940(857)	940(857)						

### AIRCRAFT UNABLE TO RECEIVE DME I-LL

Advise ATC. Equivalent radar ranges will be provided when established on the localiser approaching the nominal FAP and 4NM points.

- NOTES**
- Aircraft will normally be radar vectored from the STAR Holding/Initial Approach Fixes.
  - Ranging information is provided by ILS-dedicated DME facilities. DME values derived to the nearest 0.1NM from VOR DME LON are also provided for the FAP and 4NM check altitude/heights.