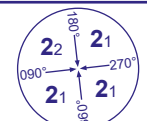


INSTRUMENT DEPARTURE - ICAO

LONDON HEATHROW

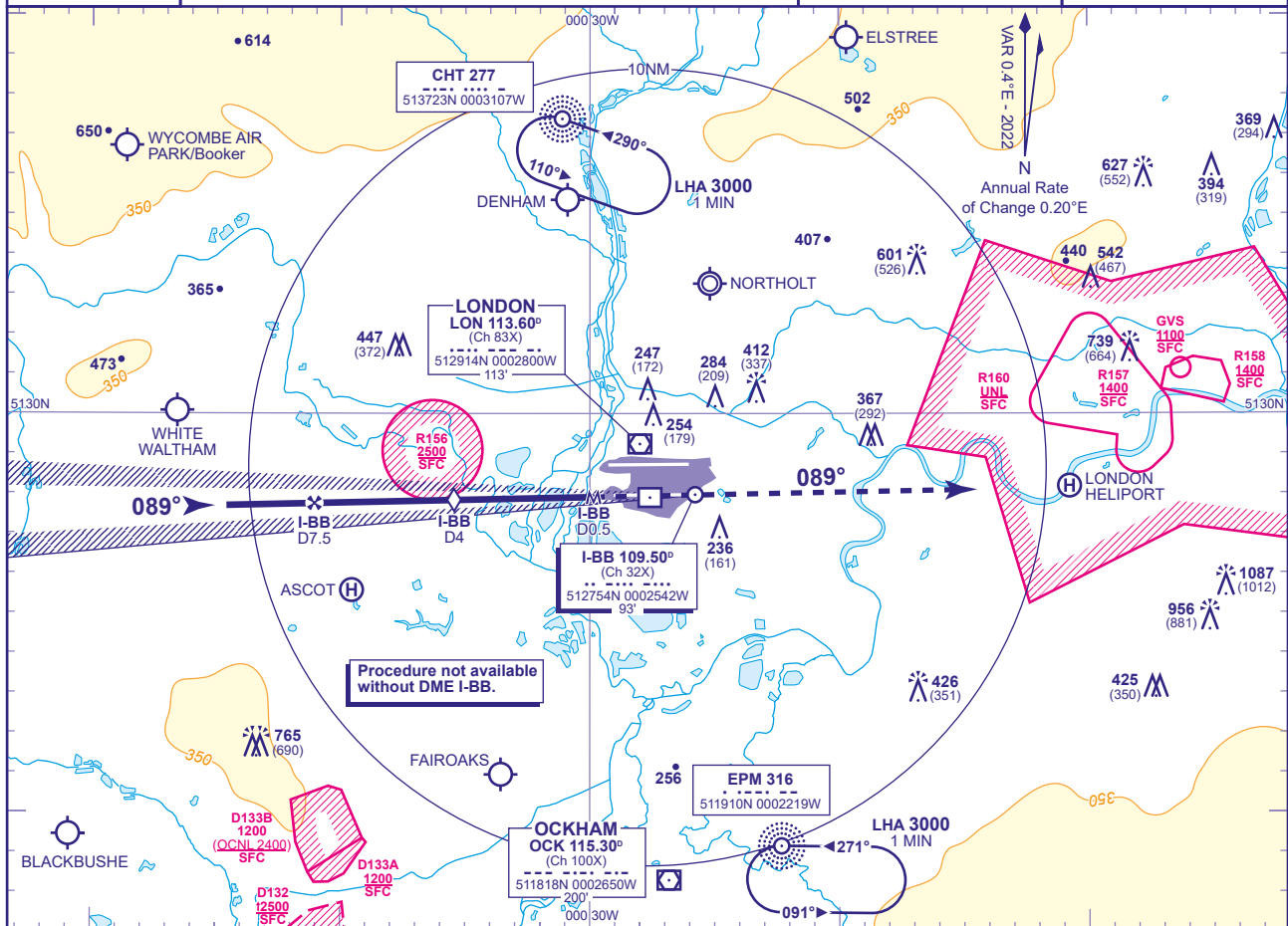
LOC/DME I-BB RWY 09R (ACFT CAT A,B,C,D)



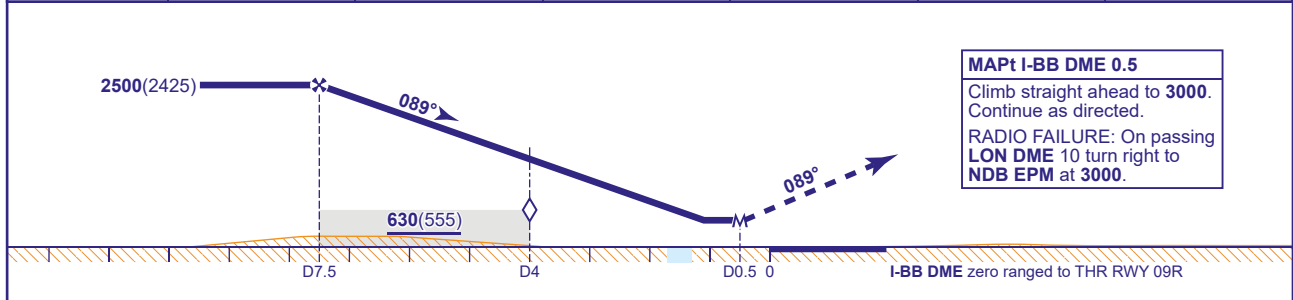
MSA 25NM LON VOR

APP 119.730, 120.400, 127.525, 134.980	HEATHROW DIRECTOR	AD ELEVATION	83
TWR 118.505, 118.705, 124.475	HEATHROW TOWER	THR ELEVATION	75
RAD 125.625, 127.525	HEATHROW RADAR	OBSTACLE ELEVATION	1087 AMSL (1012) (ABOVE THR)
ATIS 128.080, 113.750, 117.000	HEATHROW INFORMATION	BEARINGS ARE MAGNETIC	

TRANSITION ALTITUDE
6000



DME I-BB	7	6	5	4 (SDF)	3	2
ALT(HGT)	2360(2285)	2040(1965)	1720(1645)	1400(1325)	1080(1005)	760(685)



Aircraft Category		A	B	C	D	Rate of descent	G/S KT	160	140	120	100	80
							FT/MIN	850	740	640	530	420
OCA (OCH)	Procedure	480(405)	480(405)	480(405)	480(405)							
VM(C)OCA (OCH AAL)	Total Area	770(687)	770(687)	940(857)	940(857)							

NOTE Aircraft will normally be radar vectored from the STAR Holding/Initial Approach Fixes.

CHANGE (7/24): VM(C)OCA(OCH AAL) CAT C/D.