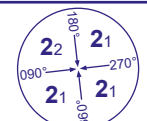


INSTRUMENT APPROACH - ICAO

LONDON HEATHROW

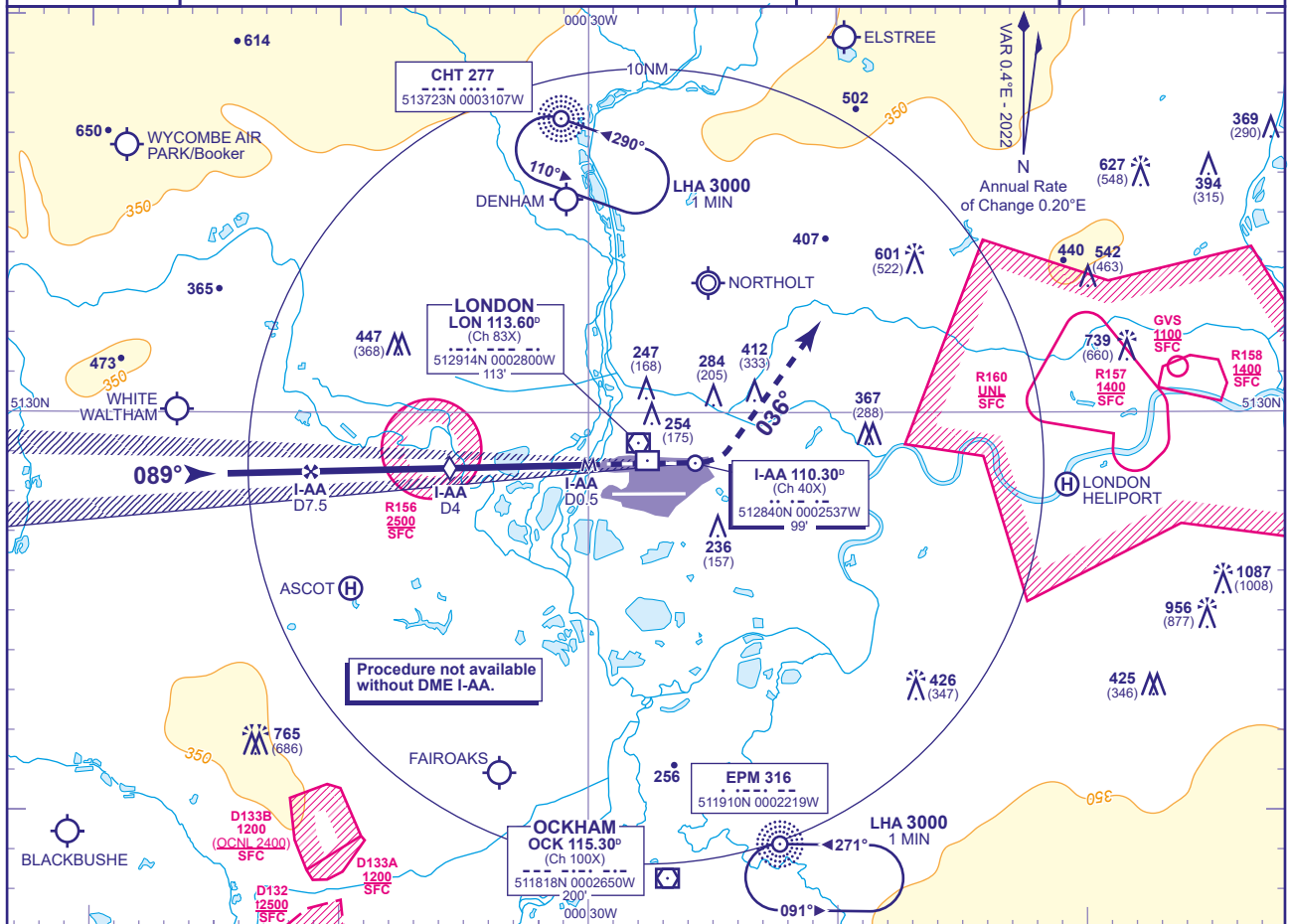
**LOC/DME I-AA
RWY 09L
(ACFT CAT A,B,C,D)**



MSA 25NM LON VOR

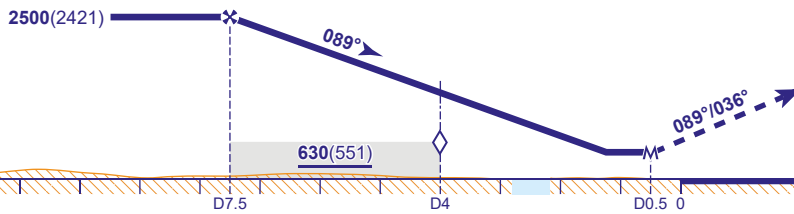
| | | |
|--|----------------------|---|
| APP 119.730, 120.400, 127.525, 134.980 | HEATHROW DIRECTOR | AD ELEVATION 83 |
| TWR 118.505, 118.705, 124.475 | HEATHROW TOWER | THR ELEVATION 79 |
| RAD 125.625, 127.525 | HEATHROW RADAR | OBSTACLE ELEVATION 1087 AMSL (1008) (ABOVE THR) |
| ATIS 128.080, 113.750, 117.000 | HEATHROW INFORMATION | BEARINGS ARE MAGNETIC |

TRANSITION ALTITUDE **6000**



RECOMMENDED PROFILE Gradient 5.24%, 318FT/NM

| | | | | | | |
|-----------------|------------|------------|------------|------------|------------|----------|
| DME I-AA | 7 | 6 | 5 | 4 (SDF) | 3 | 2 |
| ALT(HGT) | 2360(2281) | 2040(1961) | 1720(1641) | 1400(1321) | 1080(1001) | 770(691) |



MAP1 I-AA DME 0.5
Climb straight ahead: on passing 1580 or I-AA DME zero inbound whichever is the later, turn left onto track 036° climbing to 3000 then continue as directed.
RADIO FAILURE: On passing LON DME 10 proceed to NDB CHT at 3000.

| Aircraft Category | | A | B | C | D | Rate of descent | G/S KT | 160 | 140 | 120 | 100 | 80 |
|---------------------------|-------------------|----------|----------|----------|----------|-----------------|--------|--------|-----|-----|-----|-----|
| OCA (OCH) | Procedure | 480(401) | 480(401) | 480(401) | 480(401) | | | FT/MIN | 850 | 740 | 640 | 530 |
| VM(C)OCA (OCH AAL) | Total Area | 770(687) | 770(687) | 940(857) | 940(857) | | | | | | | |

NOTES 1 Aircraft will normally be radar vectored from the STAR Holding/Initial Approach Fixes.
2 All pilots must follow and adhere to recommended profiles.