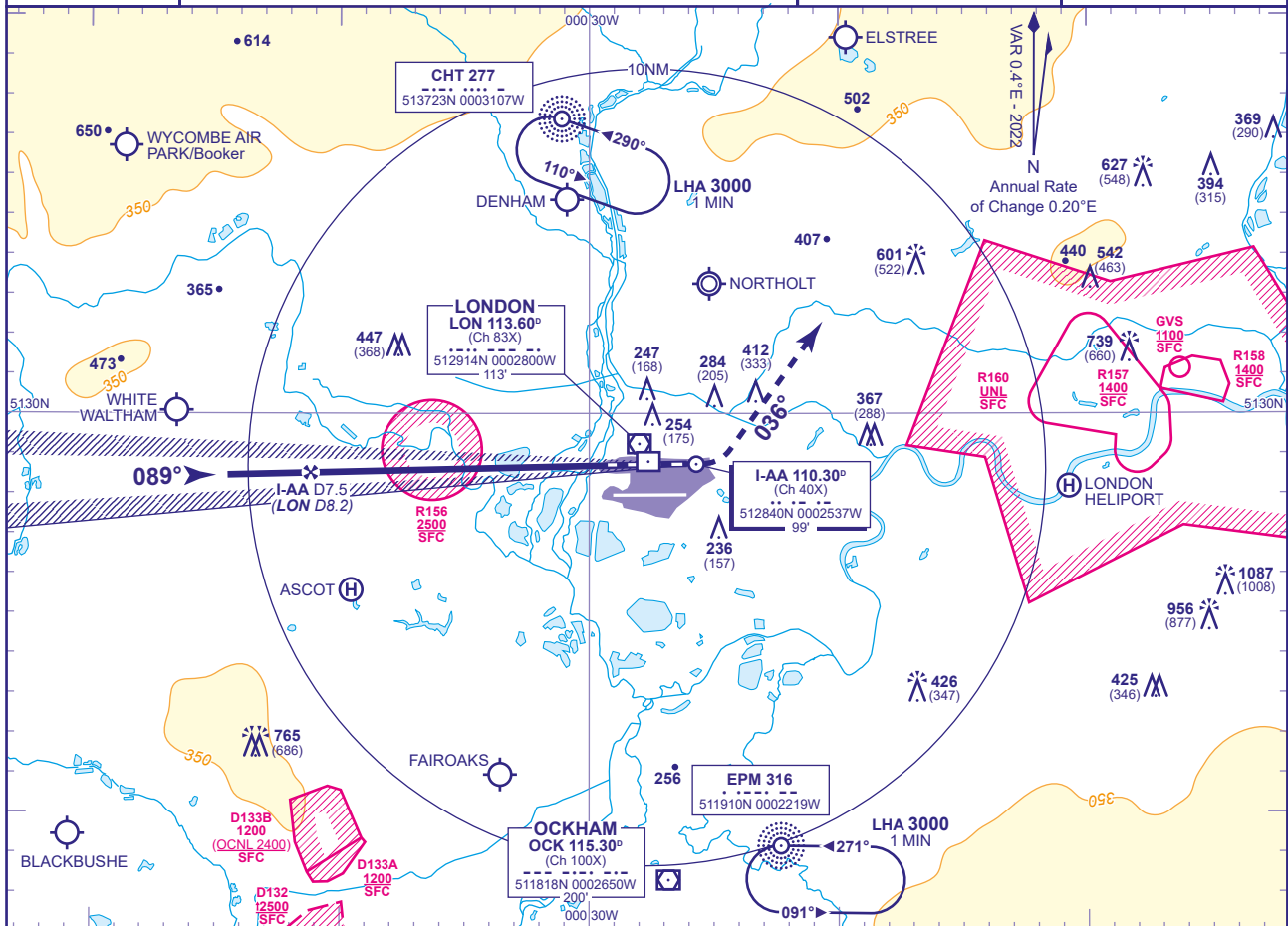


MSA 25NM LON VOR

APP 119.730, 120.400, 127.525, 134.980	HEATHROW DIRECTOR
TWR 118.505, 118.705, 124.475	HEATHROW TOWER
RAD 125.625, 127.525	HEATHROW RADAR
ATIS 128.080, 113.750, 117.000	HEATHROW INFORMATION

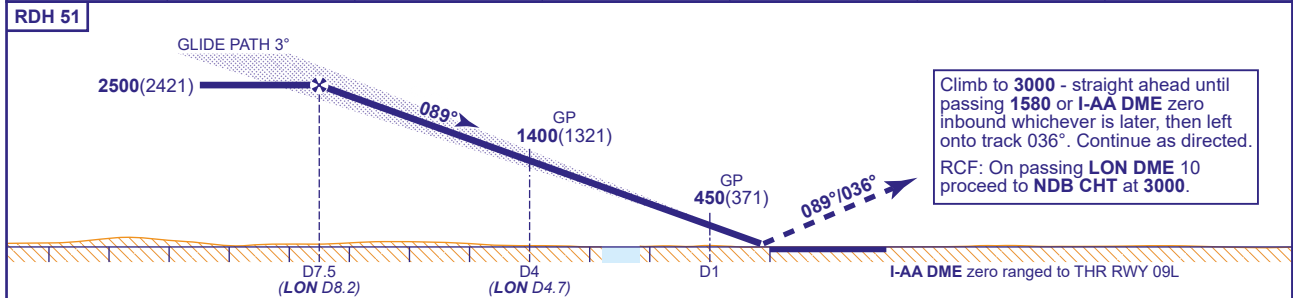
AD ELEVATION 83
THR ELEVATION 79
OBSTACLE ELEVATION 1087 AMSL (1008) (ABOVE THR)
BEARINGS ARE MAGNETIC

TRANSITION ALTITUDE 6000
--------------------------



RECOMMENDED PROFILE GLIDE PATH 3.0° 318FT/NM

DME I-AA	7	6	5	4	3	2
ALT(HGT)	2360(2281)	2040(1961)	1720(1641)	1400(1321)	1080(1001)	770(691)



Aircraft Category	A				Rate of descent	G/S KT				
	A	B	C	D		FT/MIN	160	140	120	100
OCA (OCH)	CAT I	222(143)	234(155)	248(169)	267(188)	850	740	640	530	420
	CAT II	134(55)	145(66)	158(79)	174(95)					
VM(C)OCA (OCH AAL)	Total Area	770(687)	770(687)	940(857)	940(857)					

**AIRCRAFT UNABLE TO RECEIVE DME I-AA**  
Advise ATC. Equivalent radar ranges will be provided when established on the localiser approaching the nominal FAP and 4NM points.

- NOTES**
- Aircraft will normally be radar vectored from the STAR Holding/Initial Approach Fixes.
  - Ranging information is provided by ILS-dedicated DME facilities. DME values derived to the nearest 0.1NM from VOR DME LON are also provided for the FAP and 4NM check altitude/height.