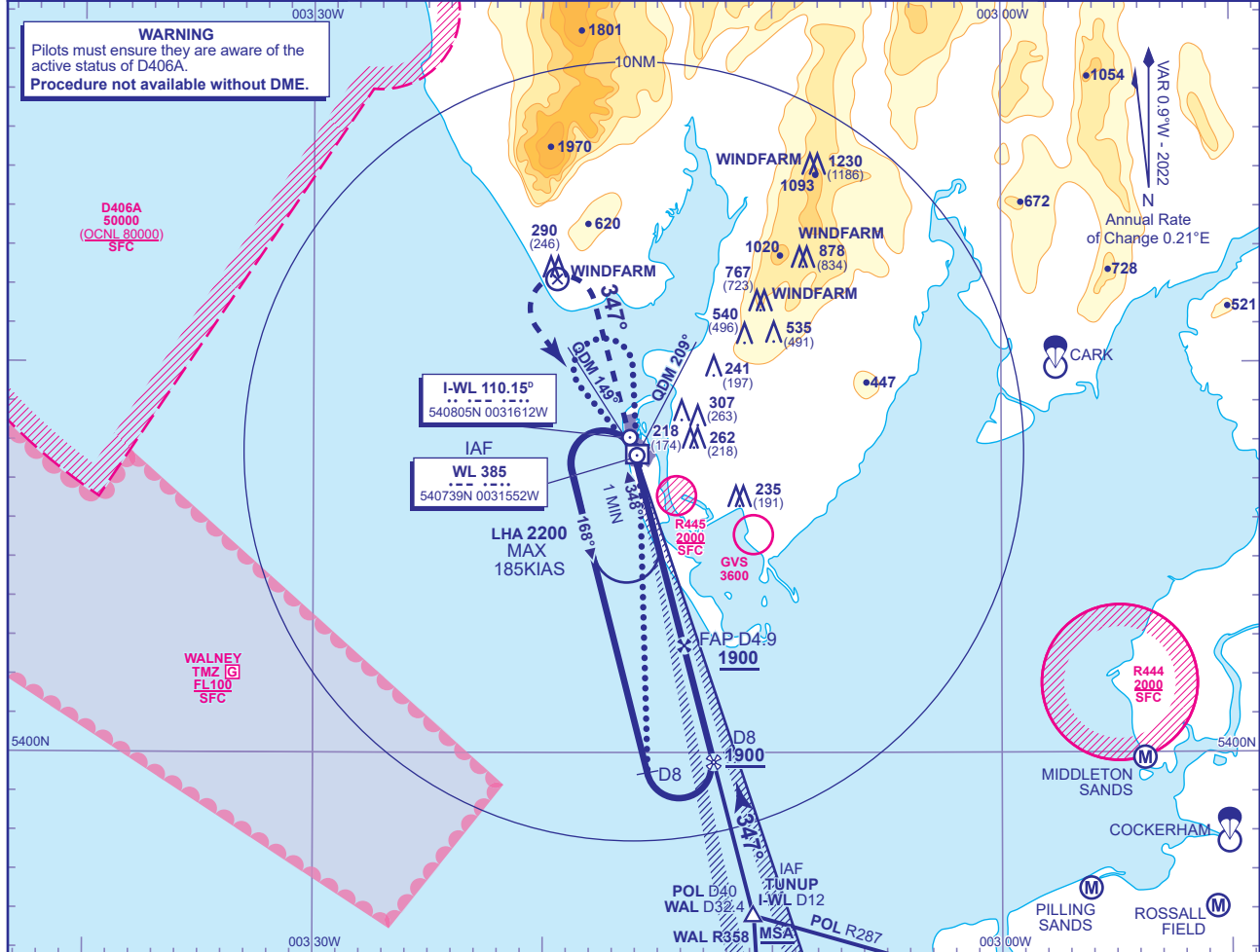


AFIS 118.080	WALNEYS INFORMATION	AD ELEVATION 44
		THR ELEVATION 44
		OBSTACLE ELEVATION 1230 AMSL (1186) (ABOVE THR)
		BEARINGS ARE MAGNETIC

TRANSITION ALTITUDE **3000**

**WARNING**  
 Pilots must ensure they are aware of the active status of D406A.  
**Procedure not available without DME.**

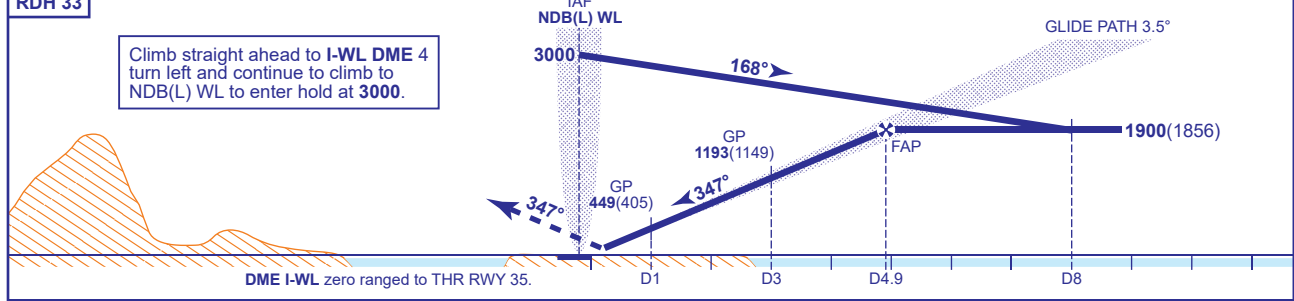


RECOMMENDED PROFILE GLIDE PATH 3.5°, 372FT/NM

DME I-WL	4	3	2	1
ALT(HGT)	1565(1521)	1193(1149)	821(777)	449(405)

RDH 33

Climb straight ahead to I-WL DME 4 turn left and continue to climb to NDB(L) WL to enter hold at 3000.



DME I-WL zero ranged to THR RWY 35.

Aircraft Category	B	Rate of descent	G/S KT	160	140	120	100	80
OCA (OCH)	CAT I 216(172)		FT/MIN	990	870	740	620	500
VM(C)OCA (OCH AAL)	Total Area 700(656)							

**ALTERNATIVE BASE TURN PROCEDURE AFTER HOLDING**  
 From overhead NDB(L) WL **not below 2300** fly outbound on NDB(L) WL QDR 322° for 1 MIN, baseturn right and manoeuvre onto NDB(L) WL QDM 179° to overhead NDB(L) WL. Continue outbound on NDB(L) WL QDR 179° descending **not below 1900**. At I-WL DME 8 baseturn left to intercept the LOC, continue as for main procedure.

**ALTERNATIVE BASE TURN PROCEDURE DIRECT ENTRY**  
 Arrive overhead NDB(L) WL **not below MSA**, only within sector entry between NDB(L) WL QDM 149° and QDM 209°. Fly outbound on NDB(L) WL QDR 179° descending **not below 1900**. At I-WL DME 8 baseturn left to intercept the LOC, continue as for main procedure.

**NOTE** Use of this procedure is strictly PPR from the aerodrome operator.

**CHANGE (6/24):** OCA(OCH) INCREASE.