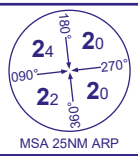


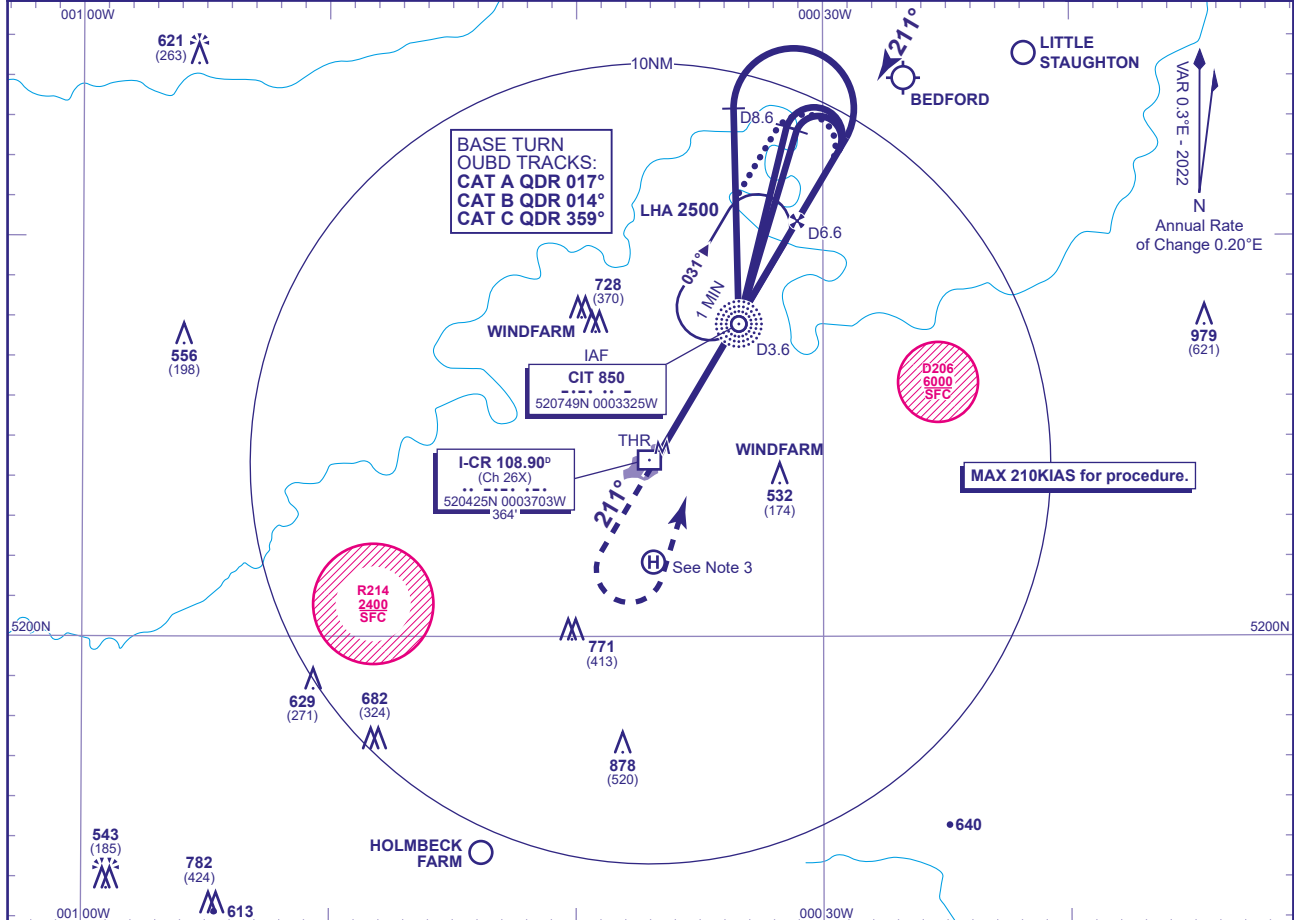
INSTRUMENT APPROACH CHART - ICAO

Cranfield NDB(L)/DME RWY 21
(ACFT CAT A,B,C)



APP	122.855	CRANFIELD APPROACH	AD ELEVATION	360
TWR	134.930, 122.855	CRANFIELD TOWER	THR ELEVATION	358
			OBSTACLE ELEVATION	979 AMSL (621) (ABOVE THR)
			BEARINGS ARE MAGNETIC	

TRANSITION ALTITUDE
6000

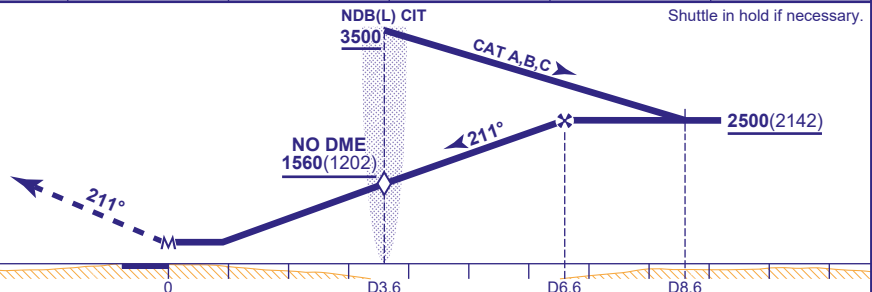


RECOMMENDED PROFILE Gradient 5.2%, 320FT/NM

DME I-CR	6	5	4	3.6 (SDF)	3	2	1
ALT(HGT)	2310(1952)	1990(1632)	1680(1322)	1560(1202)	1360(1002)	1040(682)	730(372)

MAPt DME I-CR ZERO (THR RWY 21)
(3.64NM after NDB(L) CIT)

Climb straight ahead to 1500, then climbing left turn to 2500 to join the NDB(L) CIT hold.



DME I-CR zero ranged to THR RWY 21				0	D3.6	D6.6	D8.6				
Aircraft Category	A	B	C	Rate of descent	G/S KT	160	140	120	100	80	
OCA (OCH)	Procedure	690(332)	690(332)		690(332)	FT/MIN	860	750	640	540	430
VM(C)OCA (OCH AAL)	Total Area	800(440)	970(610)	1150(790)	NDB(L) CIT to MAPt	MIN:SEC	1:25	1:35	1:50	2:12	2:46

ALTERNATIVE PROCEDURE EXTENDED HOLDING PATTERN
Extend the outbound leg of the NDB(L) CIT holding pattern to D8.6; descending to 2500(2142), then turn right to intercept the FAT. Continue as for main procedure.

AIRCRAFT UNABLE TO RECEIVE DME
Fly outbound prior to Baseturn or extended outbound leg of the NDB(L) CIT hold for 2.5MIN (CAT A); 2MIN (CAT B); 1.5MIN (CAT C) descending to 2500(2142). Then turn right to intercept the FAT. When established inbound descend not below 1560(1202) at the SDF (NDB(L) CIT), then to MDH.

NOTE 1 ATC will normally require holding **not below 3500**. Lowest altitude to commence procedure after missed approach is **2500**.
2 CIT NDB(L) hold restrictions: MAX holding level **5000**, MAX 180KIAS.
3 Occasional helicopter activity at Helimech Helipad (520152N 0003653W).
4 Aircraft may be requested to report crossing the DTY115 radial.

CHANGE (6/24): PAGE NUMBER.