

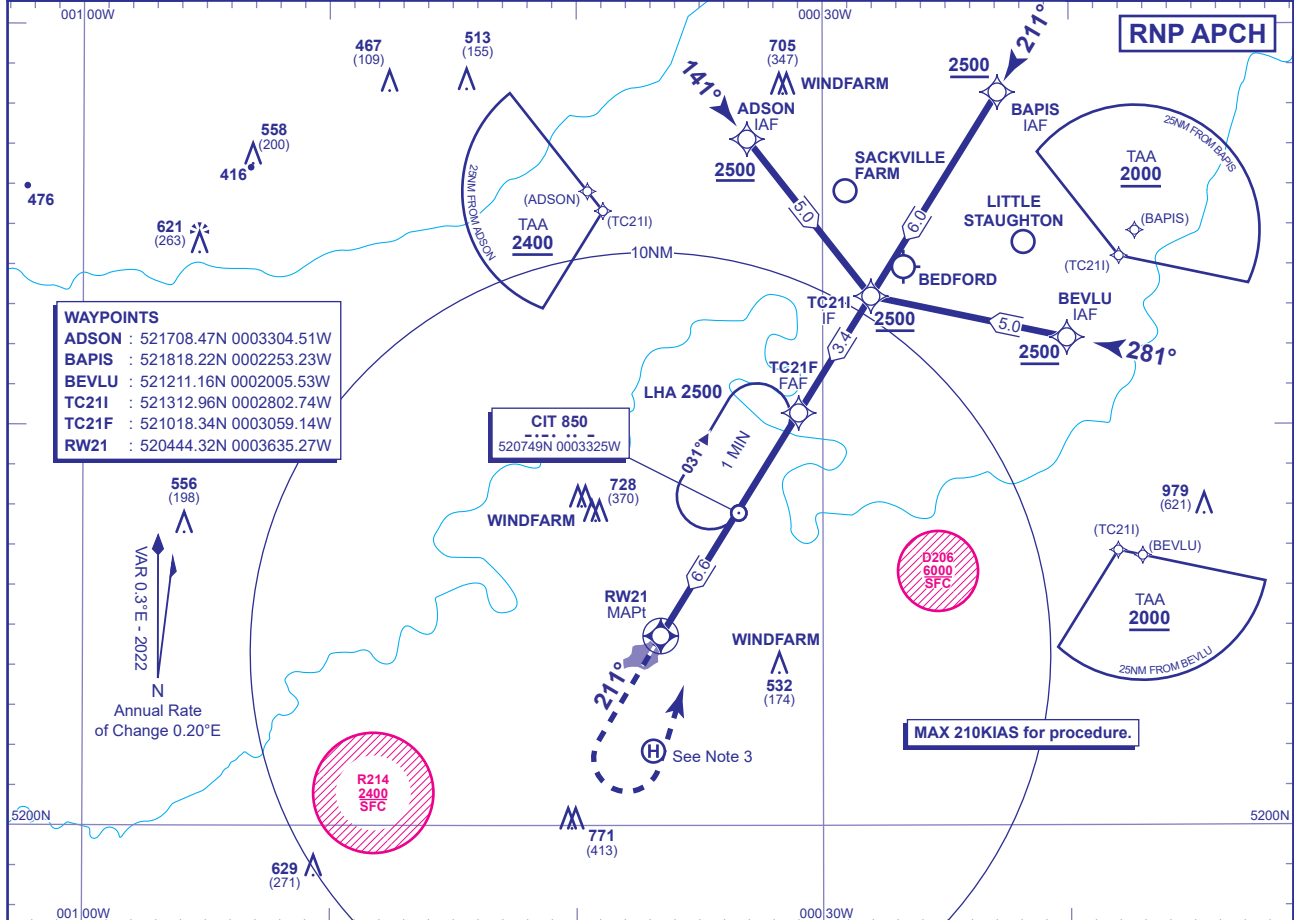
INSTRUMENT APPROACH CHART - ICAO

CRANFIELD
RNP
RWY 21
 (ACFT CAT A,B,C)

24
 MSA 25NM NDB CIT

| | | | | |
|-----|------------------|--------------------|-----------------------|-------------------------------|
| APP | 122.855 | CRANFIELD APPROACH | AD ELEVATION | 360 |
| TWR | 134.930, 122.855 | CRANFIELD TOWER | THR ELEVATION | 358 |
| | | | OBSTACLE ELEVATION | 979 AMSL (621) (ABOVE THR) |
| | | | BEARINGS ARE MAGNETIC | |

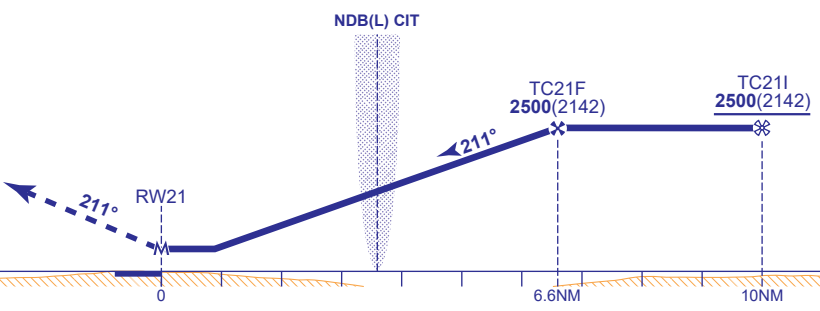
TRANSITION ALTITUDE
6000



RECOMMENDED PROFILE Gradient 5.2%, 320FT/NM

| | | | | | | |
|----------|------------|------------|------------|------------|-----------|----------|
| NM | 6 | 5 | 4 | 3 | 2 | 1 |
| ALT(HGT) | 2320(1962) | 2000(1642) | 1680(1322) | 1370(1012) | 1050(692) | 730(372) |

MAPt (LNAV): RW21
 Climb straight ahead to 1500, then climbing left turn to 2500 to join the NDB(L) CIT hold.



| Aircraft Category | | A | B | C | Rate of descent | G/S KT | 160 | 140 | 120 | 100 | 80 |
|--------------------|------------|----------|----------|-----------|-----------------|--------|-----|-----|-----|-----|-----|
| OCA (OCH) | LNAV | 690(332) | 690(332) | 690(332) | | FT/MIN | 850 | 740 | 640 | 530 | 420 |
| VM(C)OCA (OCH AAL) | Total Area | 800(440) | 970(610) | 1150(790) | | | | | | | |

NOTE 1 CIT NDB(L) hold restrictions: MAX holding level 5000, MAX 180KIAS.
NOTE 2 Missed Approach Procedure uses conventional navigation aids and is not available without NDB(L) CIT.
NOTE 3 Occasional helicopter activity at Helimech Helipad (520152N 0003653W).
NOTE 4 Aircraft may be requested to report crossing the DTY115 radial.