

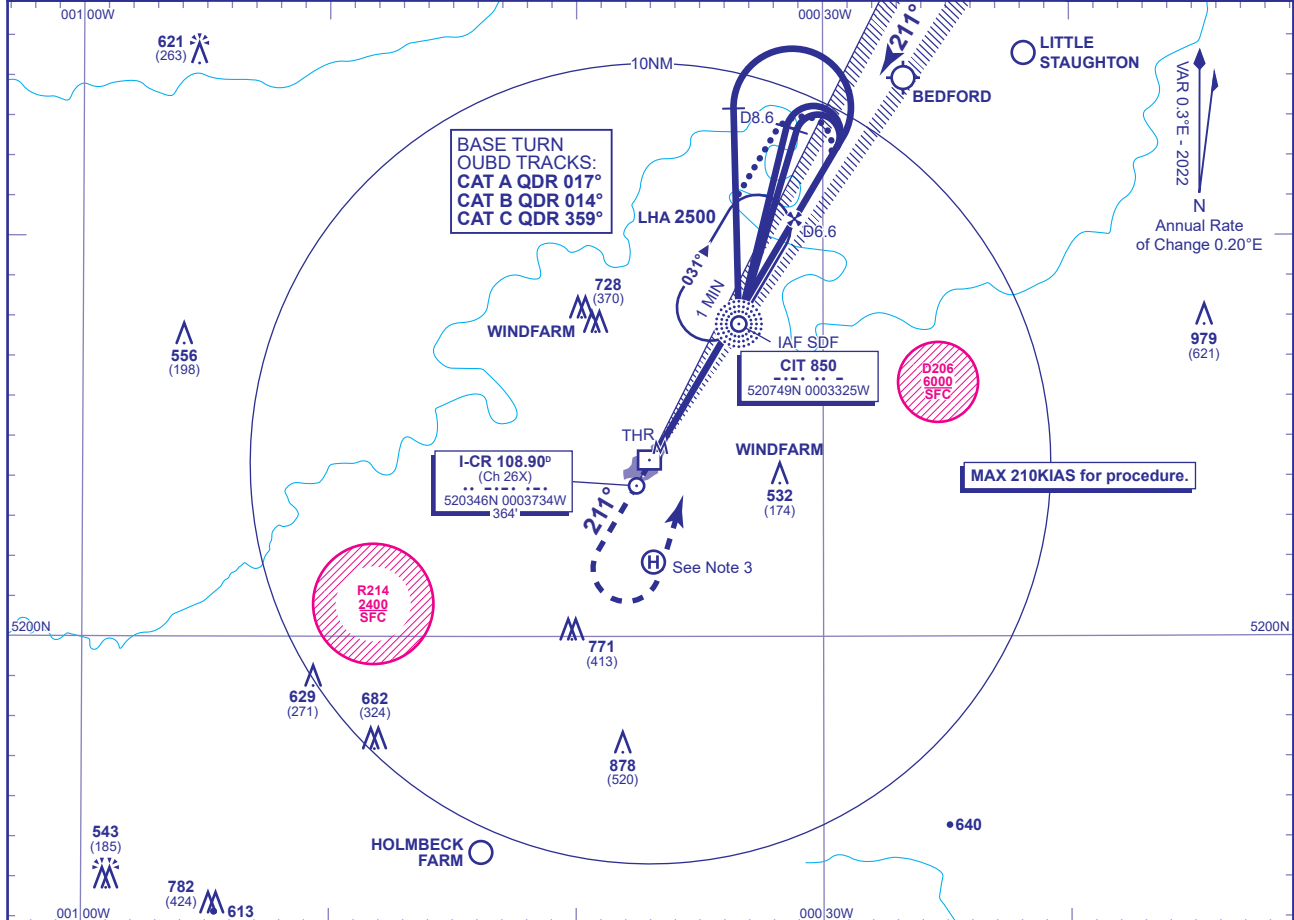
INSTRUMENT APPROACH CHART - ICAO

CRANFIELD
LOC/DME/NDB(L)
RWY 21
 (ACFT CAT A,B,C)



APP	122.855	CRANFIELD APPROACH	AD ELEVATION	360
TWR	134.930, 122.855	CRANFIELD TOWER	THR ELEVATION	358
			OBSTACLE ELEVATION	979 AMSL (621) (ABOVE THR)
			BEARINGS ARE MAGNETIC	

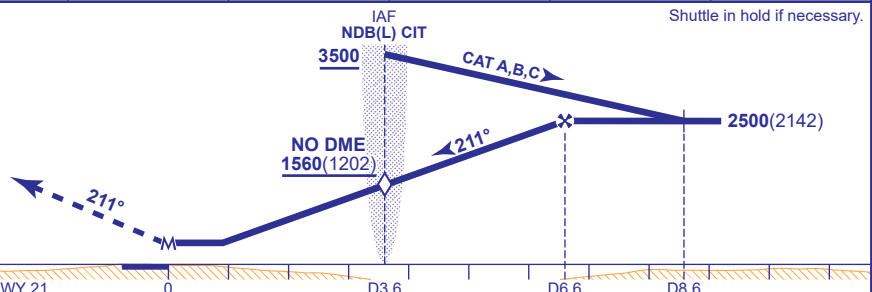
TRANSITION ALTITUDE
6000



RECOMMENDED PROFILE Gradient 5.2%, 320FT/NM

DME I-CR	6	5	4	3.6 (SDF)	3	2	1
ALT(HGT)	2310(1952)	1990(1632)	1680(1322)	1560(1202)	1360(1002)	1040(682)	730(372)

MAPt THR RWY 21
 Climb straight ahead to **1500**, then climbing left turn to **2500** to join the **NDB(L) CIT** hold.



DME I-CR zero ranged to THR RWY 21

Aircraft Category	A	B	C	Rate of descent	G/S KT	160	140	120	100	80
OCA (OCH) Procedure	670(312)	670(312)	670(312)		FT/MIN	860	750	640	540	430
VM(C)OCA (OCH AAL) Total Area	800(440)	970(610)	1150(790)	NDB(L) CIT to MAPt	MIN:SEC	1:25	1:35	1:50	2:12	2:46

ALTERNATIVE PROCEDURE EXTENDED HOLDING PATTERN
 Extend the outbound leg of the NDB(L) CIT holding pattern to D8.6; descending to **2500(2142)**. Then turn right to intercept the LOC. Continue as for main Procedure.

AIRCRAFT UNABLE TO RECEIVE DME
 Fly outbound prior to baseturn or extend outbound leg of the NDB(L) CIT hold for 2.5MIN (CAT A); 2MIN (CAT B); 1.5MIN (CAT C) descending to **2500(2142)**. Then turn right to intercept the LOC. When established inbound descend not below **1560 (1202)** at the SDF (NDB(L) CIT), then to MDH.

NOTE 1 ATC will normally require holding **not below 3500**. Lowest altitude to commence procedure after missed approach is **2500**.
2 CIT NDB(L) hold restrictions: MAX holding level **5000**, MAX **180KIAS**.
3 Occasional helicopter activity at Helimech Helipad (520152N 0003653W).
4 Aircraft may be requested to report crossing the DTY115 radial.

CHANGE (6/24): PAGE NUMBER.