

INSTRUMENT APPROACH CHART - ICAO

KEMBLE RNP RWY 26 (ACFT CAT A,B,C,D)

AFIS 118.430	KEMBLE INFORMATION	AD ELEVATION 436
LARS 124.275	BRIZE RADAR	THR ELEVATION 411
ZONE 119.000	BRIZE ZONE	OBSTACLE ELEVATION 992 AMSL (581) (ABOVE THR)

MIN TEMP -10°C
TRANSITION ALTITUDE 3000

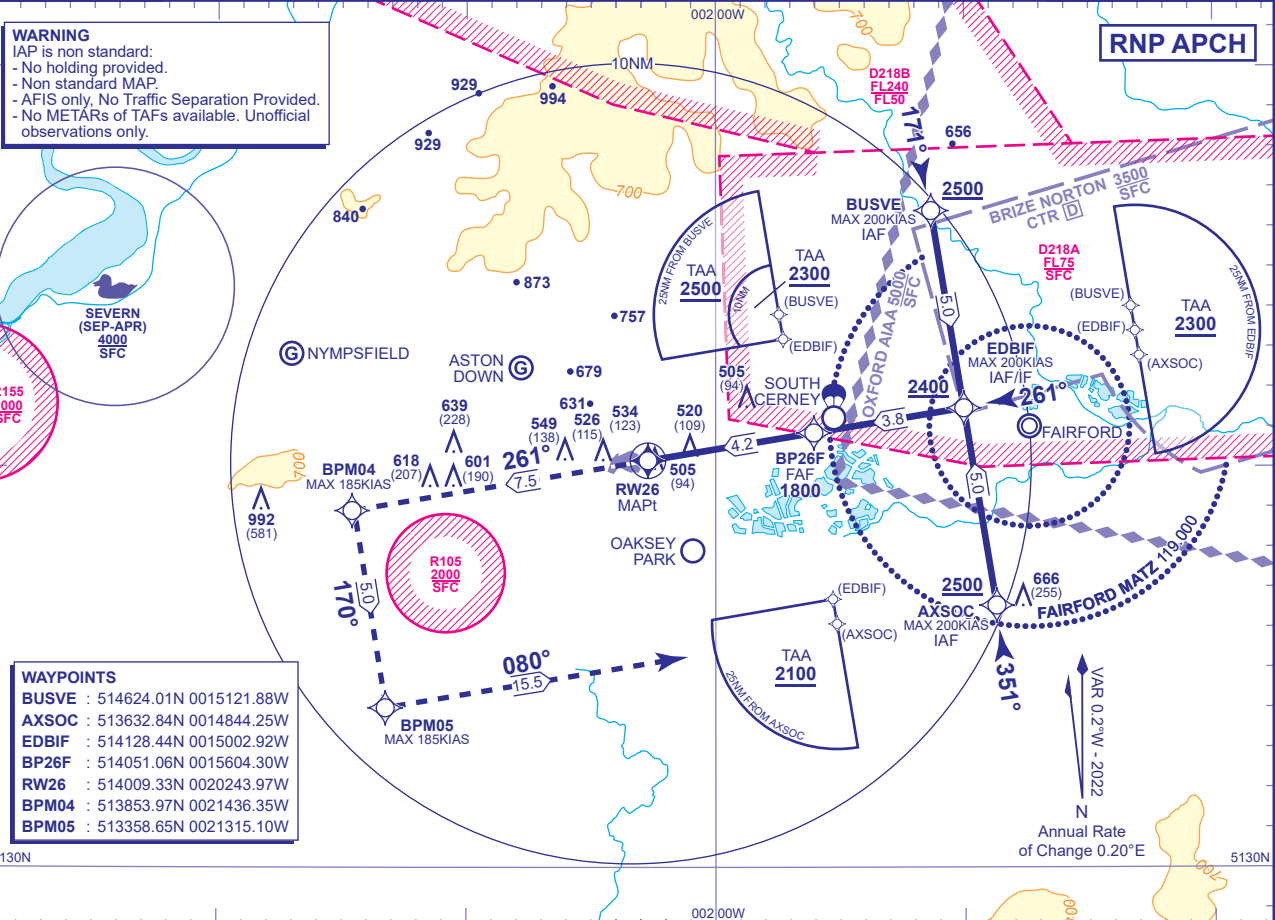


WARNING
IAP is non standard:
- No holding provided.
- Non standard MAP.
- AFIS only, No Traffic Separation Provided.
- No METARS or TAFs available. Unofficial observations only.



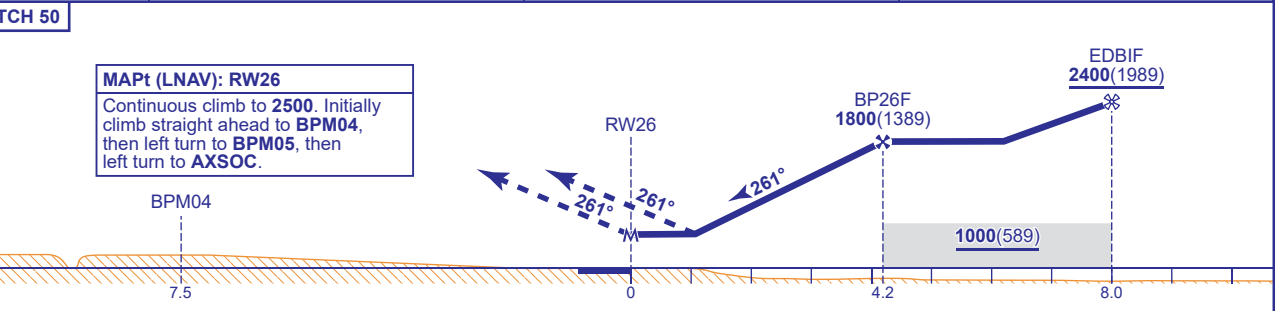
WAYPOINTS

BUSVE : 514624.01N 0015121.88W
 AXSOC : 513632.84N 0014844.25W
 EDBIF : 514128.44N 0015002.92W
 BP26F : 514051.06N 0015604.30W
 RW26 : 514009.33N 0020243.97W
 BPM04 : 513853.97N 0021436.35W
 BPM05 : 513358.65N 0021315.10W



RECOMMENDED PROFILE VNAV Vertical Path Angle 3.0° (LNAV 5.24%), 319FT/NM

NM to RW26	4	3	2
ALT(HGT)	1730(1319)	1420(1009)	1100(689)



Aircraft Category		A	B	C	D	Rate of descent	G/S KT	160	140	120	100	80
		LNAV/VNAV	920(509)	920(509)	1020(609)		1120(709)	FT/MIN	850	740	640	530
OCA (OCH)	LNAV	920(509)	920(509)	1020(609)	1120(709)							
VM(C)OCA (OCH AAL)	Total Area	950(514)	980(544)	1160(724)	1270(834)							

- NOTE 1** IAP only available during notified ATZ HRS and AFIS available.
NOTE 2 IAP is in Class D and G Airspace. Pilots are required to co-ordinate their approach with 124.275 Brize Radar prior to commencing the approach either by direct communication with 124.275 Brize Radar or via Kemble FIS.
NOTE 3 Pilots are advised of gliding activity in the vicinity of Kemble.
NOTE 4 Pilots are advised of IAPs to RWY 07/25 at RAF Brize Norton.
NOTE 5 RAF Fairford notified operational by NOTAM.
NOTE 6 Use of IAP is strictly PPR from the aerodrome operator.
NOTE 7 RAF Brize Norton frequencies are intended for transit and/or a LARS service and do not provide approach to Cotswold airport as described in the pilot brief.

CHANGE (5/24): FAIRFORD DANGER AREAS ADDED.