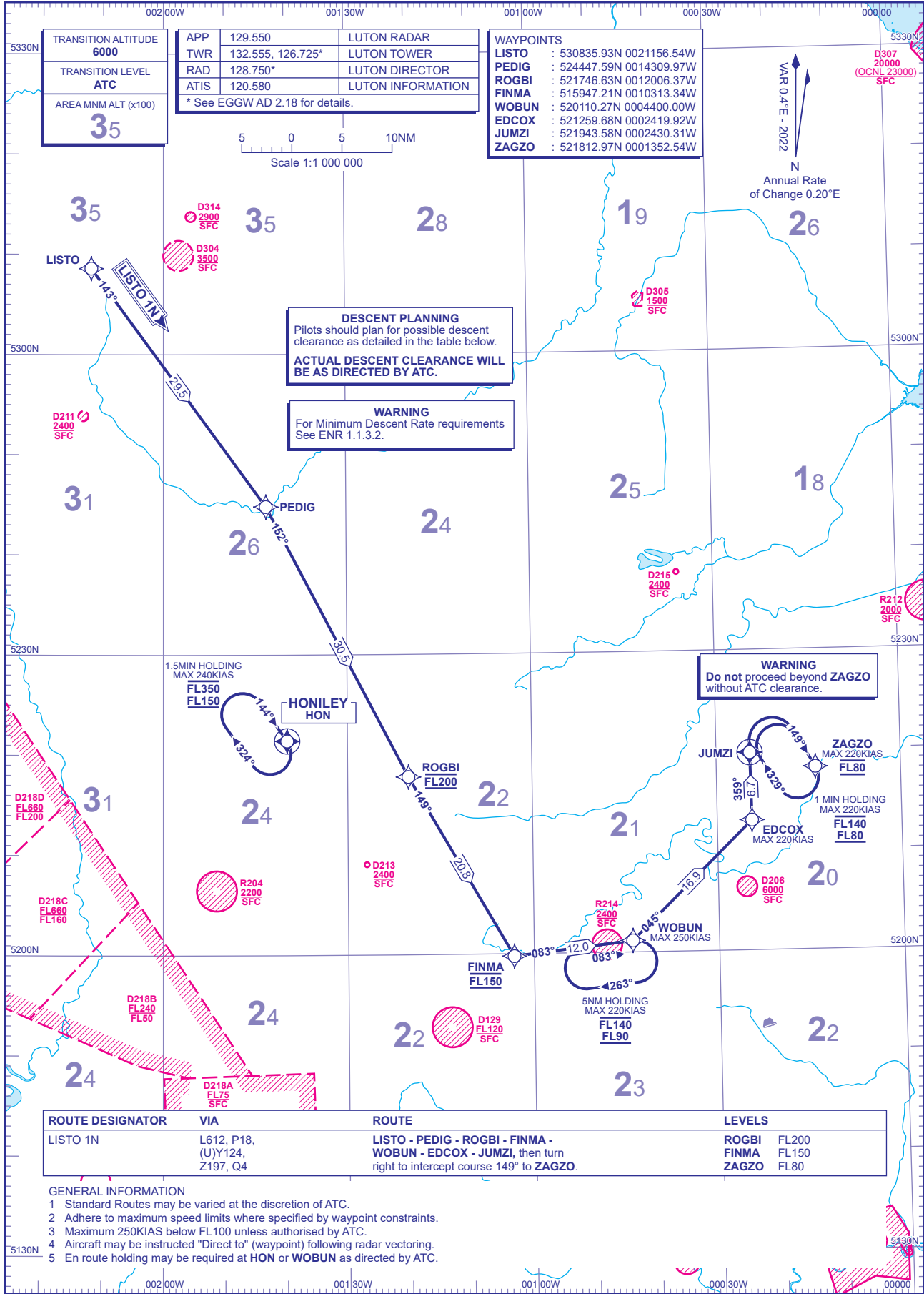


**RNAV1 (DME/DME or GNSS)  
STANDARD ARRIVAL CHART -  
INSTRUMENT (STAR) - ICAO**

DISTANCES IN NAUTICAL MILES  
TRACKS ARE MAGNETIC  
ALTITUDES AND ELEVATIONS ARE IN FEET

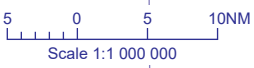
**LONDON LUTON  
LISTO 1N**



TRANSITION ALTITUDE <b>6000</b>
TRANSITION LEVEL <b>ATC</b>
AREA MNM ALT (x100) <b>35</b>

APP	129.550	LUTON RADAR
TWR	132.555, 126.725*	LUTON TOWER
RAD	128.750*	LUTON DIRECTOR
ATIS	120.580	LUTON INFORMATION
* See EGGW AD 2.18 for details.		

WAYPOINTS	
LISTO	: 530835.93N 0021156.54W
PEDIG	: 524447.59N 0014309.97W
ROGBI	: 521746.63N 0012006.37W
FINMA	: 515947.21N 0010313.34W
WOBUN	: 520110.27N 0004400.00W
EDCOX	: 521259.68N 0002419.92W
JUMZI	: 521943.58N 0002430.31W
ZAGZO	: 521812.97N 0001352.54W



VAR 0.4° E - 2022  
N  
Annual Rate of Change 0.20° E

**DESCENT PLANNING**  
Pilots should plan for possible descent clearance as detailed in the table below.  
**ACTUAL DESCENT CLEARANCE WILL BE AS DIRECTED BY ATC.**

**WARNING**  
For Minimum Descent Rate requirements See ENR 1.1.3.2.

**WARNING**  
Do not proceed beyond ZAGZO without ATC clearance.

ROUTE DESIGNATOR	VIA	ROUTE	LEVELS
LISTO 1N	L612, P18, (U)Y124, Z197, Q4	LISTO - PEDIG - ROGBI - FINMA - WOBUN - EDCOX - JUMZI, then turn right to intercept course 149° to ZAGZO.	ROGBI FL200 FINMA FL150 ZAGZO FL80

- GENERAL INFORMATION**
- Standard Routes may be varied at the discretion of ATC.
  - Adhere to maximum speed limits where specified by waypoint constraints.
  - Maximum 250KIAS below FL100 unless authorised by ATC.
  - Aircraft may be instructed "Direct to" (waypoint) following radar vectoring.
  - En route holding may be required at HON or WOBUN as directed by ATC.