

**RNAV1 (DME/DME or GNSS)
STANDARD ARRIVAL CHART -
INSTRUMENT (STAR) - ICAO**

DISTANCES IN NAUTICAL MILES
TRACKS ARE MAGNETIC
ALTITUDES AND ELEVATIONS ARE IN FEET

**LONDON LUTON
UNDUG 1N SIRIC 1N**

APP	129.550	LUTON RADAR
TWR	132.555, 126.725*	LUTON TOWER
RAD	128.750*	LUTON DIRECTOR
ATIS	120.580	LUTON INFORMATION

* See EGGW AD 2.18 for details.

WAYPOINTS

UNDUG	: 504723.71N 0002530.03E
MAY	: 510101.86N 0000658.04E
SIRIC	: 512036.17N 0013358.89W
NIGIT	: 511846.96N 0011014.71W
VATON	: 512603.83N 0002056.10W
OZZOT	: 514028.93N 0000952.93W
BPK	: 514459.05N 0000624.25W
ILLOC	: 515517.20N 0001056.60E
OXDUF	: 520636.20N 0001900.00E
COCCU	: 521604.34N 0000322.02W
JUMZI	: 521943.58N 0002430.31W
ZAGZO	: 521812.97N 0001352.54W

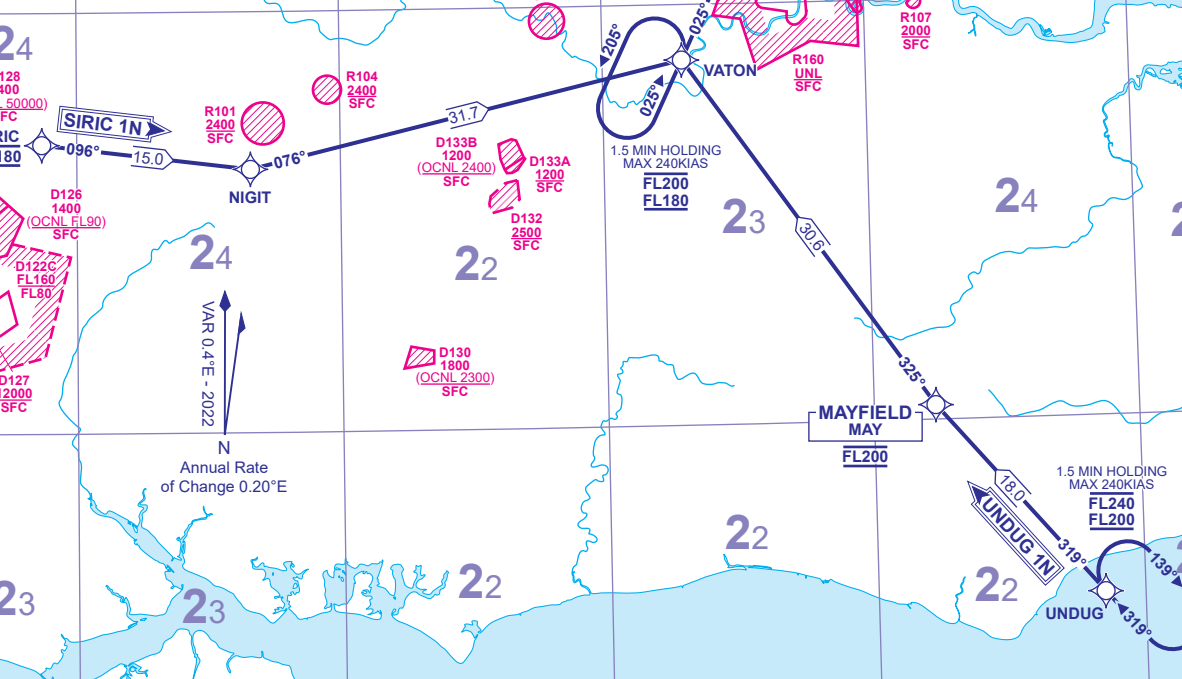
TRANSITION ALTITUDE	6000
TRANSITION LEVEL	ATC
AREA MNM ALT (x100)	24



WARNING
Do not proceed beyond ZAGZO
without ATC clearance.

DESCENT PLANNING
Pilots should plan for possible descent
clearance as detailed in the table below.
**ACTUAL DESCENT CLEARANCE WILL
BE AS DIRECTED BY ATC.**

WARNING
For Minimum Descent Rate requirements
See ENR 1.1.3.2.



ROUTE DESIGNATOR	VIA	ROUTE	LEVELS
UNDUG 1N	(U)M733	UNDUG - MAY - VATON - OZZOT - BPK - ILLOC - OXDUF - COCCU - JUMZI, then turn right to intercept course 149° to ZAGZO.	MAY FL200 OZZOT FL150 ZAGZO FL80
SIRIC 1N	P2	SIRIC - NIGIT - VATON - OZZOT - BPK - ILLOC - OXDUF - COCCU - JUMZI, then turn right to intercept course 149° to ZAGZO.	SIRIC FL180 OZZOT FL150 ZAGZO FL80

- GENERAL INFORMATION**
- Standard Routes may be varied at the discretion of ATC.
 - Adhere to maximum speed limits where specified by waypoint constraints.
 - Maximum 250KIAS below FL100 unless authorised by ATC.
 - Aircraft may be instructed "Direct to" (waypoint) following radar vectoring.
 - En-route holding may be required at UNDUG or VATON as directed by ATC.

CHANGE (5/24): D218A ADDED.

AERO INFO DATE 26 FEB 24

AD 2-EGGW-7-