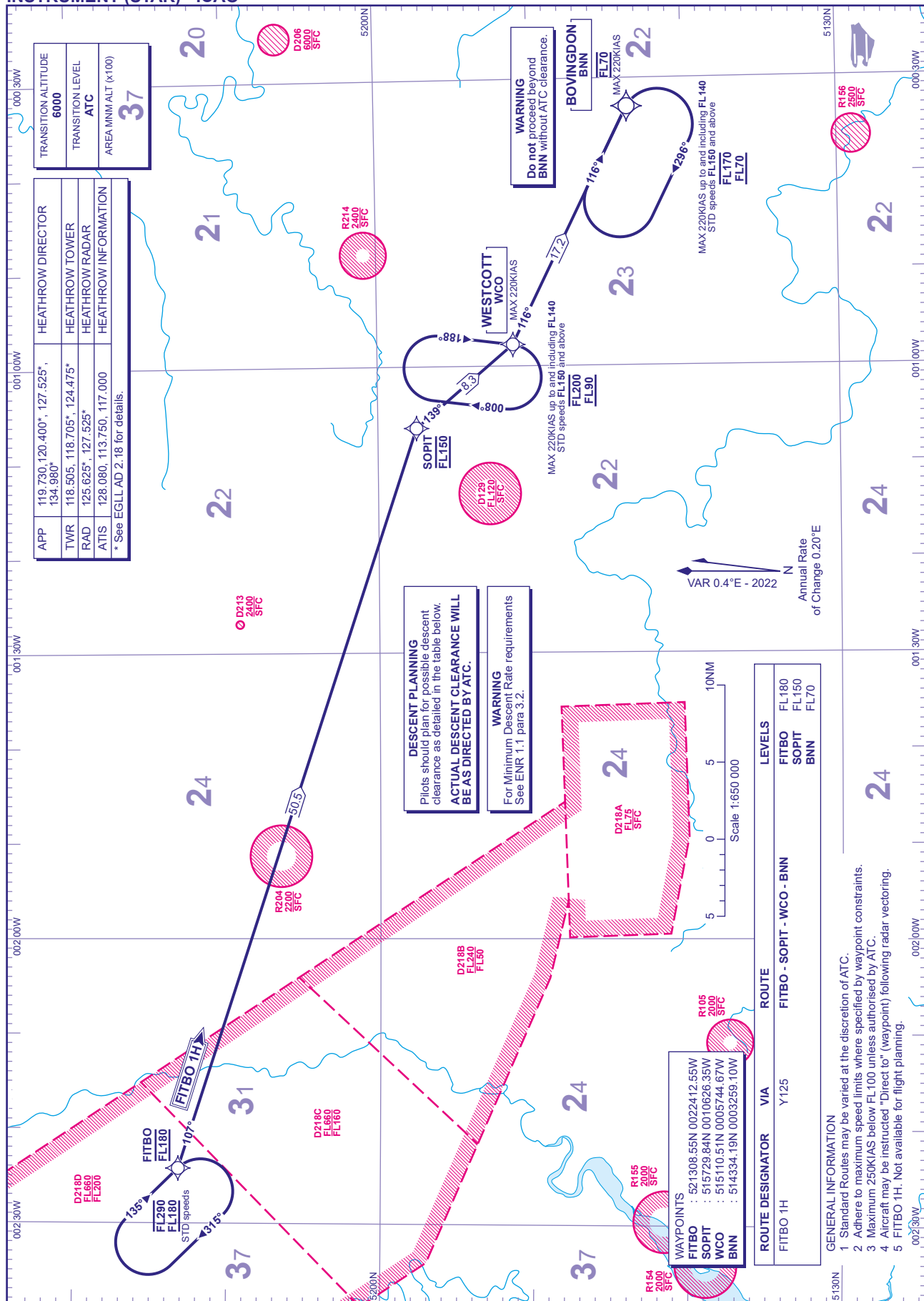


RNAV1 (DME/DME or GNSS) STANDARD ARRIVAL CHART - INSTRUMENT (STAR) - ICAO

DISTANCES IN NAUTICAL MILES
TRACKS ARE UNIDIRECTIONAL
ALTITUDES AND ELEVATIONS ARE IN FEET

LONDON HEATHROW
FITB 1H



TRANSITION ALTITUDE	6000
TRANSITION LEVEL	ATC
AREA MNM ALT. (x100)	37

APP	119.730, 120.400*, 127.525*	HEATHROW DIRECTOR
TWR	118.505, 118.705*, 124.475*	HEATHROW TOWER
RAD	125.625*, 127.525*	HEATHROW RADAR
ATIS	128.080, 113.750, 117.000	HEATHROW INFORMATION

* See EGLL AD 2.18 for details.

DESCENT PLANNING
Pilots should plan for possible descent clearance as detailed in the table below.
ACTUAL DESCENT CLEARANCE WILL BE AS DIRECTED BY ATC.

WARNING
For Minimum Descent Rate requirements See ENR 1.1 para 3.2.

WAYPOINTS	: 521308.55N 0022412.55W
FITBO	: 515729.84N 0010626.35W
SOPIT	: 515110.51N 0005744.67W
WCO	: 514334.19N 0003259.10W
BNN	: 514334.19N 0003259.10W

ROUTE DESIGNATOR	VIA	ROUTE	LEVELS
FITBO 1H	Y125	FITBO - SOPIT - WCO - BNN	FITBO FL180 SOPIT FL150 BNN FL70

- GENERAL INFORMATION**
- Standard Routes may be varied at the discretion of ATC.
 - Adhere to maximum speed limits where specified by waypoint constraints.
 - Maximum 250KIAS below FL100 unless authorised by ATC.
 - Aircraft may be instructed "Direct to" (waypoint) following radar vectoring.
 - FITBO 1H. Not available for flight planning.

CHANGE (5/24): FAIRFORD DANGER AREAS ADDED.

AERO INFO DATE 23 FEB 24

AD 2-EGLL-7-11