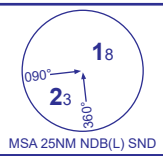


INSTRUMENT APPROACH CHART - ICAO

SOUTHWEST
SRA RTR 2NM
RWY 05
 (ACFT CAT A,B,C)



APP	130.780	SOUTHWEST APPROACH	AD ELEVATION	55
TWR	127.730	SOUTHWEST TOWER	THR ELEVATION	55
RAD	130.780	SOUTHWEST RADAR	OBSTACLE ELEVATION 572 AMSL (517) (ABOVE THR)	
	128.965	SOUTHWEST DIRECTOR		
ATIS	136.055	SOUTHWEST INFORMATION	BEARINGS ARE MAGNETIC	

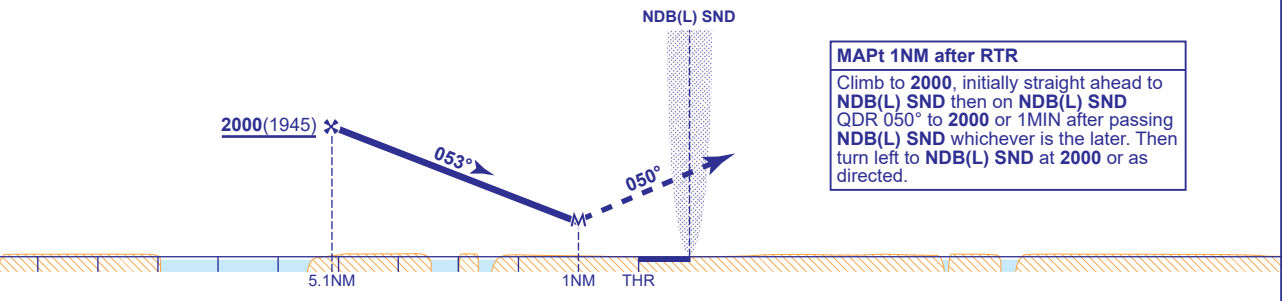
TRANSITION ALTITUDE
6000



RECOMMENDED PROFILE Gradient 6.12%, 370FT/NM

NM	5.0	4.0	3.0	2.0
ALT(HGT)	1970(1915)	1590(1535)	1220(1165)	850(795)

Initial and intermediate approach as directed by radar.



MAPt 1NM after RTR
 Climb to 2000, initially straight ahead to NDB(L) SND then on NDB(L) SND QDR 050° to 2000 or 1MIN after passing NDB(L) SND whichever is the later. Then turn left to NDB(L) SND at 2000 or as directed.

Aircraft Category	Procedure	A	B	C	Rate of descent	G/S KT	160	140	120	100	80
		580(525)	580(525)	580(525)		FT/MIN	990	870	740	620	500
VM(C)OCA (OCH AAL)	Total Area	600(545)	700(645)	900(845)	RTR to MAPT	MIN:SEC	0:23	0:26	0:30	0:36	0:45

NOTE Aircraft will be required to hold not lower than 2500. Lowest altitude to commence procedure from NDB(L) SND following a missed approach is 2000.

CHANGE (4/24): OCA(OCH) INCREASED. CONTROLLING OBSTACLE ADDED.