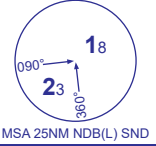


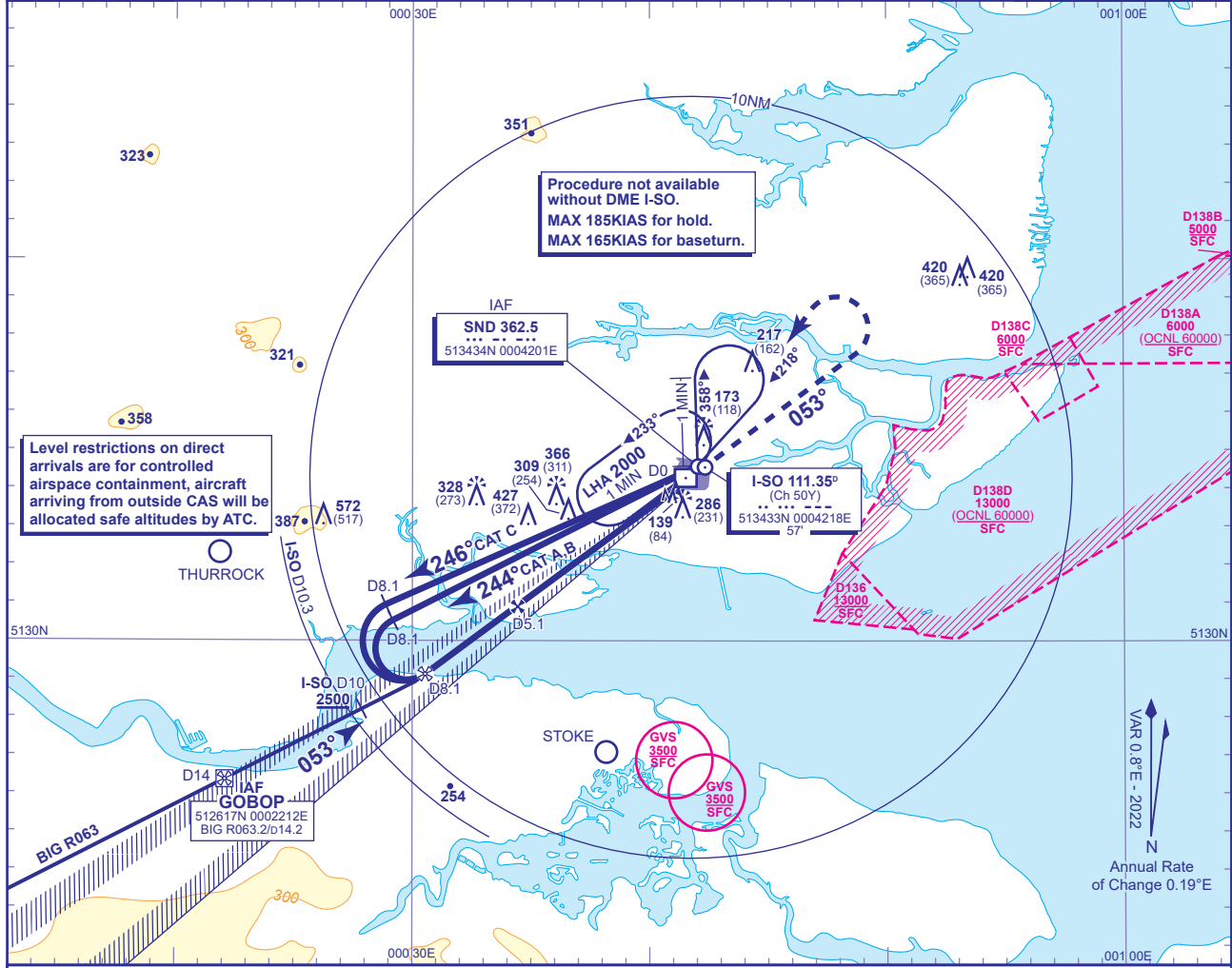
PROCEDURE CHART - ICAO

SOUTHEND LOC/DME/NDB(L) RWY 05 (ACFT CAT A,B,C)



APP	130.780	SOUTHEND APPROACH	AD ELEVATION	55
TWR	127.730	SOUTHEND TOWER	THR ELEVATION	55
RAD	130.780	SOUTHEND RADAR	OBSTACLE ELEVATION	572 AMSL (517) (ABOVE THR)
	128.965	SOUTHEND DIRECTOR		
ATIS	136.055	SOUTHEND INFORMATION	BEARINGS ARE MAGNETIC	

TRANSITION ALTITUDE
6000



Level restrictions on direct arrivals are for controlled airspace containment, aircraft arriving from outside CAS will be allocated safe altitudes by ATC.

Procedure not available without DME I-SO.
MAX 185KIAS for hold.
MAX 165KIAS for baseturn.

IAF
SND 362.5
513434N 0004201E

I-SO 111.35°
Ch 50Y
513433N 0004218E
57'

THURROCK

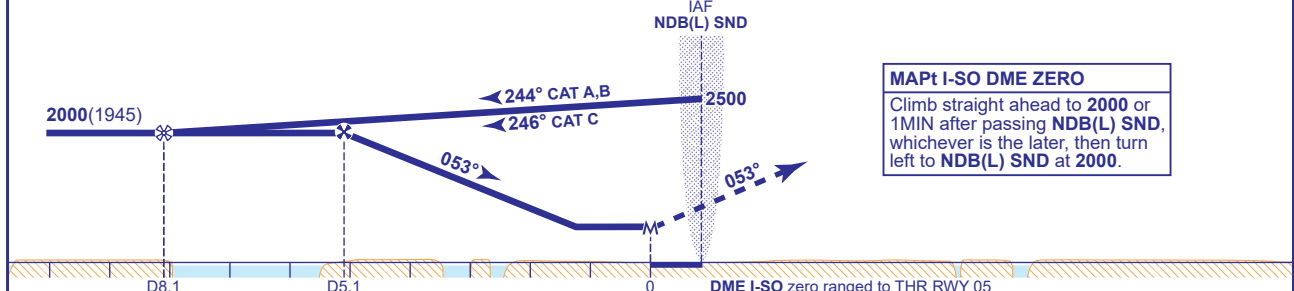
STOKE

GOBOP
512617N 0002212E
BIG R063.2/014.2

VAR 0.8°E - 2022
Annual Rate of Change 0.19°E

RECOMMENDED PROFILE Gradient 6.12%, 370FT/NM

DME I-SO	5	4	3	2
ALT(HGT)	1970 (1915)	1590 (1535)	1220 (1165)	850 (795)



MAPt I-SO DME ZERO
Climb straight ahead to 2000 or 1MIN after passing NDB(L) SND, whichever is the later, then turn left to NDB(L) SND at 2000.

Aircraft Category		A	B	C	Rate of descent	G/S KT	160	140	120	100	80
OCA (OCH)	Procedure	580(525)	580(525)	580(525)		FT/MIN	990	870	740	620	500
VM(C)OCA (OCH AAL)	Total Area	600(545)	700(645)	900(845)							

NOTES
1 Aircraft will normally be required to hold not lower than 2500. Lowest altitude to commence procedure from NDB(L) SND following Missed Approach is 2000.
2 Maximum 185KIAS for hold and 165KIAS base turns.
3 Do not exceed I-SO D10.3 to remain within controlled airspace.