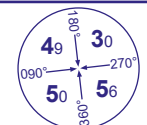


# INSTRUMENT APPROACH CHART - ICAO

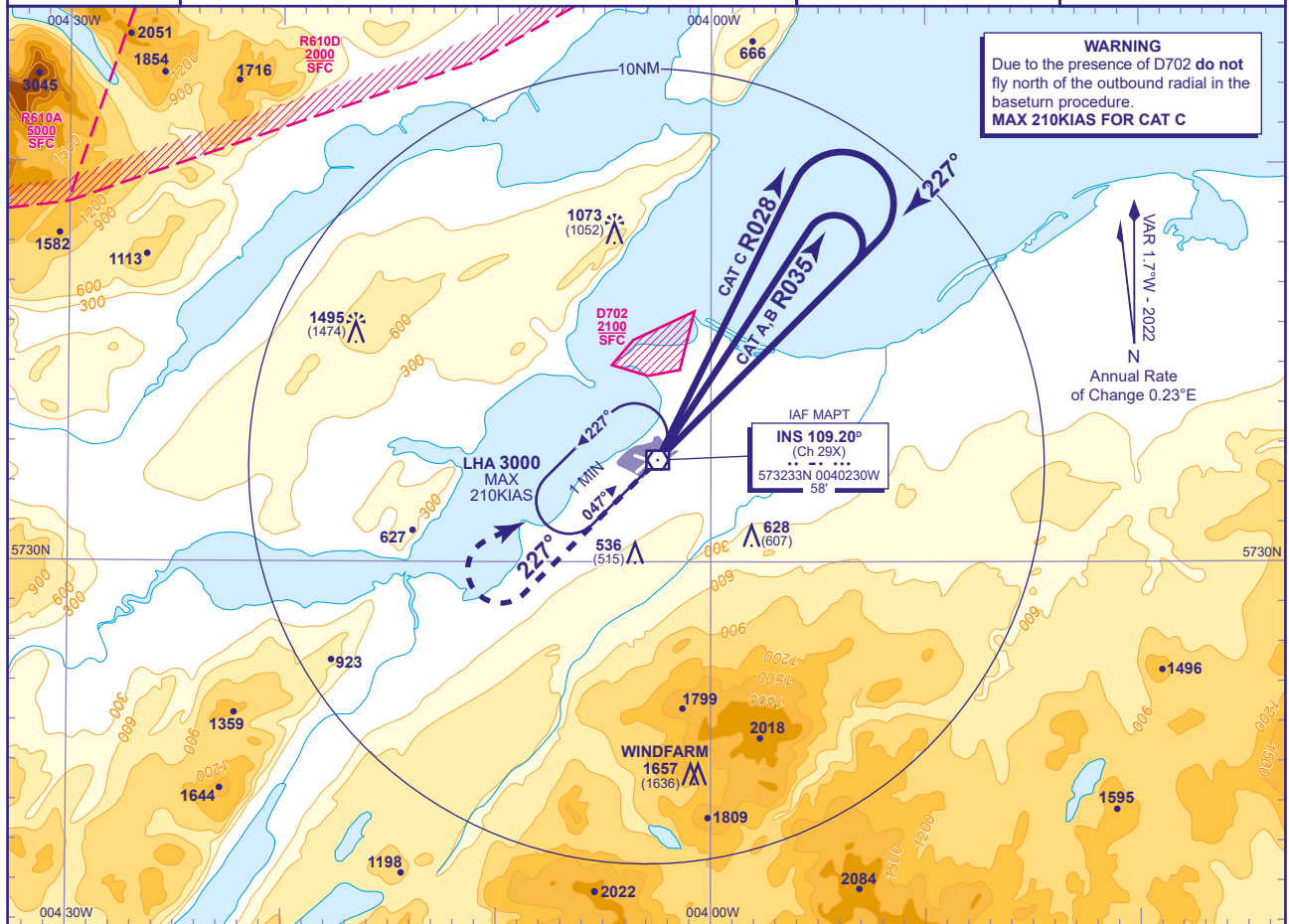
**INVERNESS VOR RWY 23**  
(ACFT CAT A,B,C)



MSA 25NM VOR INS

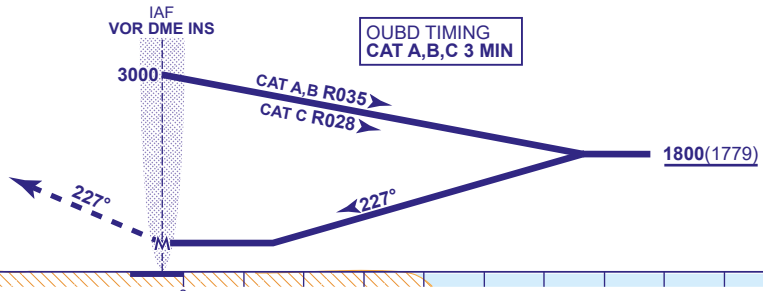
APP	122.605	INVERNESS APPROACH	AD ELEVATION	31
TWR	118.405, 122.605	INVERNESS TOWER	THR ELEVATION	21
RAD	122.605	INVERNESS RADAR	OBSTACLE ELEVATION	1495 AMSL (1474) (ABOVE THR)
ATIS	109.200	INVERNESS INFORMATION	BEARINGS ARE MAGNETIC	

TRANSITION ALTITUDE  
**3000**



**MAPt VOR INS**  
Climb straight ahead to 3000 then climbing turn right to VOR INS at 3000 to hold (see note 2) or as directed.

**OUBD TIMING**  
CAT A,B,C 3 MIN



Aircraft Category		A	B	C
OCA (OCH)	Procedure	450(429)	450(429)	450(429)
	Total Area	700(669)	840(809)	1400(1369)
VM(C)OCA (OCH AAL)	North of RWY 05/23	490(459)	540(509)	1100(1069)

**NOTE 1** FAT offset 4° north of RWY 23 C/L.  
**NOTE 2** Pilots should take account of the climb performance of their aircraft to arrange their flight to reach INS VOR at 3000.

CHANGE (4/24): HOLD UPDATED.