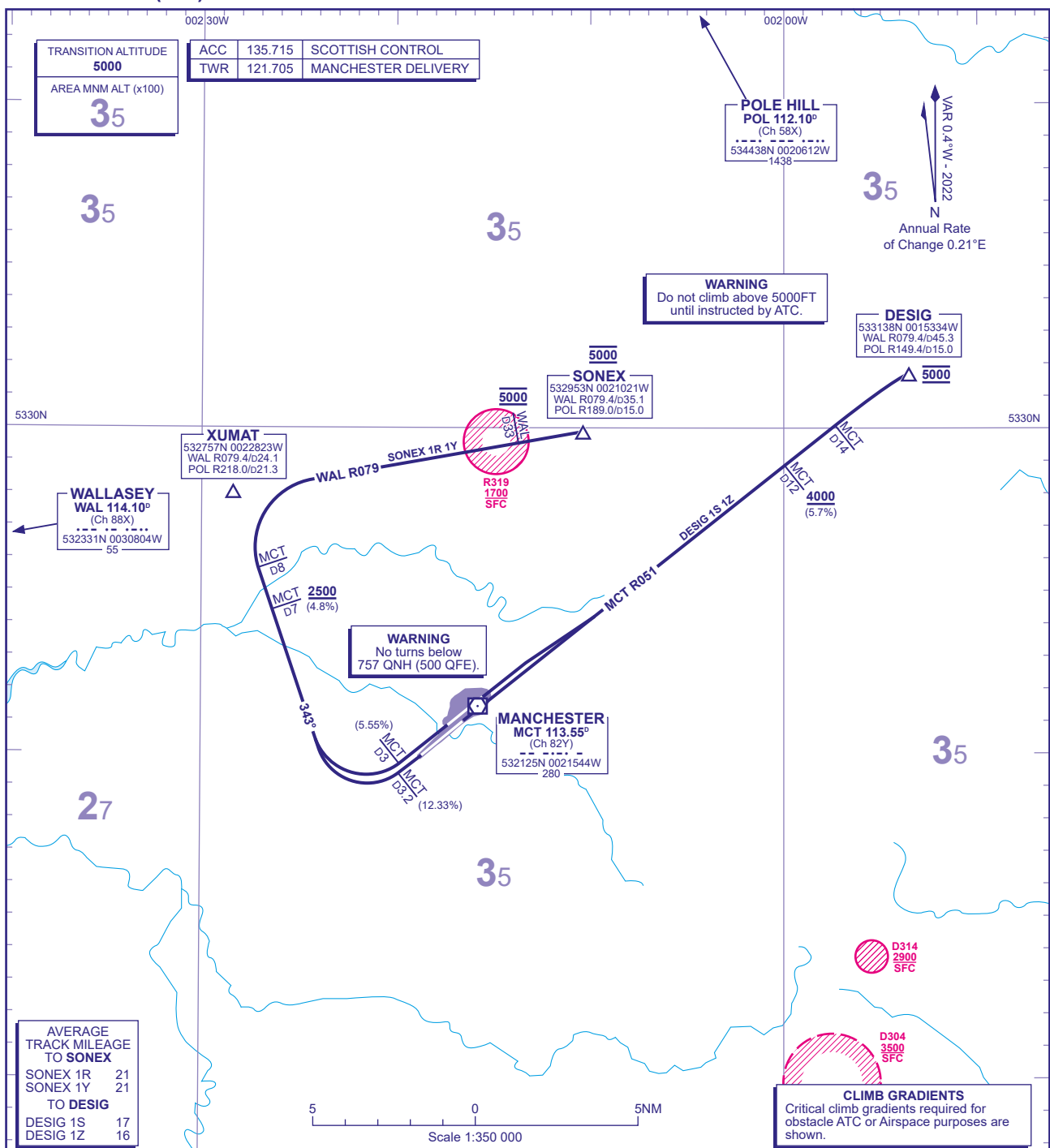


# STANDARD DEPARTURE CHART - INSTRUMENT (SID) - ICAO

DISTANCES IN NAUTICAL MILES  
BEARINGS, TRACKS AND RADIALS ARE MAGNETIC  
ALTITUDES AND ELEVATIONS ARE IN FEET

# SONEX 1R 1Y/DESIG 1S 1Z



TRANSITION ALTITUDE  
**5000**

AREA MNM ALT (x100)  
**35**

|     |         |                     |
|-----|---------|---------------------|
| ACC | 135.715 | SCOTTISH CONTROL    |
| TWR | 121.705 | MANCHESTER DELIVERY |

**POLE HILL**  
POL 112.10°  
(Ch 58X)  
534438N 0020612W  
1438

VAR 0.4°W - 2022  
N  
Annual Rate of Change 0.21°E

**WARNING**  
Do not climb above 5000FT until instructed by ATC.

**DESIG**  
533138N 0015334W  
WAL R079.4/d45.3  
POL R149.4/d15.0

**5000**  
**SONEX**  
532953N 0021021W  
WAL R079.4/d35.1  
POL R189.0/d15.0

**XUMAT**  
532757N 0022823W  
WAL R079.4/d24.1  
POL R218.0/d21.3

**WALLASEY**  
WAL 114.10°  
(Ch 88X)  
532331N 0030804W  
55

**WARNING**  
No turns below 757 QNH (500 QFE).

**MANCHESTER**  
MCT 113.55°  
(Ch 82Y)  
532125N 0021544W  
280

**AVERAGE TRACK MILEAGE TO SONEX**

|          |    |
|----------|----|
| SONEX 1R | 21 |
| SONEX 1Y | 21 |

**TO DESIG**

|          |    |
|----------|----|
| DESIG 1S | 17 |
| DESIG 1Z | 16 |

**CLIMB GRADIENTS**  
Critical climb gradients required for obstacle ATC or Airspace purposes are shown.

|                      |  |       |
|----------------------|--|-------|
| SONEX 1R<br>RWY 23R↑ | Climb straight ahead at 5.55% or above (See Note 5). At MCT D3 turn right onto track 343° towards XUMAT. Cross MCT D7 at 2500 or above (4.8%). At MCT D8 turn right onto WAL VOR R079 to SONEX. Cross WAL D33 at 5000. Cross SONEX at 5000.    | L975. |
| SONEX 1Y<br>RWY 23L  | Climb straight ahead at 12.33% or above (See Note 5). At MCT D3.2 turn right onto track 343° towards XUMAT. Cross MCT D7 at 2500 or above (4.8%). At MCT D8 turn right onto WAL VOR R079 to SONEX. Cross WAL D33 at 5000. Cross SONEX at 5000. | L975. |
| DESIG 1S<br>RWY 05L↑ | Climb straight ahead. At not below 757 ALT (500 AAL), but not before DER, adjust track onto MCT VOR R051 (See Note 5). Cross MCT D12 at 4000 or above (5.7%). At MCT D14 turn right to intercept WAL VOR R079 to DESIG. Cross DESIG at 5000.   | L603. |
| DESIG 1Z<br>RWY 05R  | Climb straight ahead on MCT VOR R051 (See Note 5). Cross MCT D12 at 4000 or above (5.7%). At MCT D14 turn right to intercept WAL VOR R079 to DESIG. Cross DESIG at 5000.   | L603. |

**OBSTACLE CLEARANCE** - ↑ RWY 23R/RWY 05L: Close in obstacles exist below 100 AAL and are not considered for procedure gradients.

**GENERAL INFORMATION**

- SIDs reflect Noise Preferential Routings. See EGCC AD 2.21 for Noise Abatement Procedures.
- En-route cruising levels will be allocated after departure by 'Scottish Control'. **Do not climb above SID level until cleared by ATC.**
- Call sign for RTF frequency used **when instructed** after take-off 'Scottish Control'. On first contact advise call sign/SID designator current altitude and cleared altitude.
- Maximum 250KIAS below FL100 unless otherwise authorised.
- WARNING: RUNWAY 23L/05L.** In the event of a missed approach on runway 23R/05R ATC may instruct aircraft which have departed from runway 23L/05L to make a LEFT turn in order to establish separation.
- Expect first CPDLC Data Link Authority to be EGTG.

**CHANGE (2/24):** POL VOR RECALIBRATED. RADIALS.