

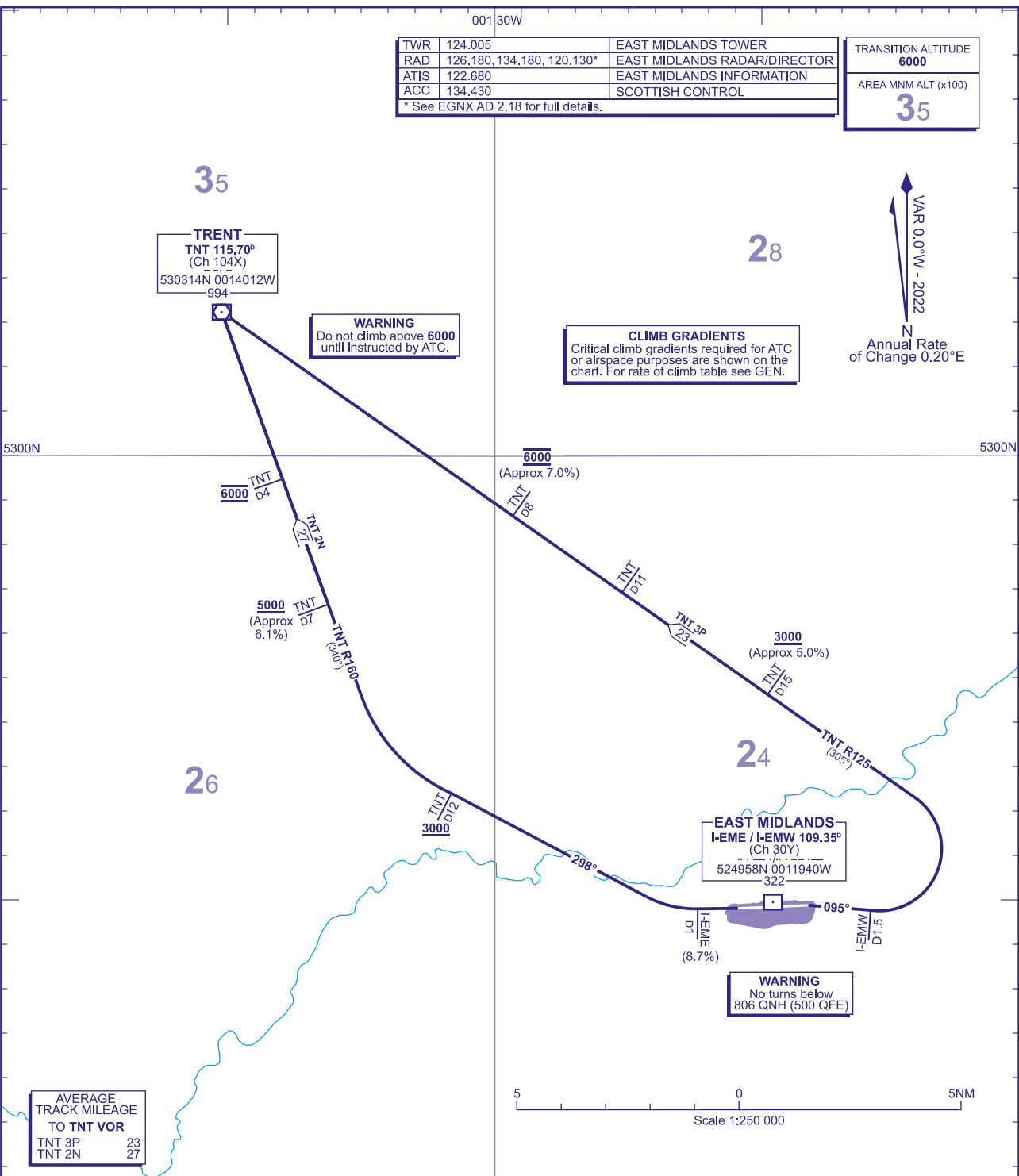
STANDARD DEPARTURE CHART - INSTRUMENT (SID) - ICAO

DISTANCES IN NAUTICAL MILES
BEARINGS, TRACKS AND RADIALS ARE MAGNETIC
ALTITUDES AND ELEVATIONS IN FEET

EAST MIDLANDS TRENT

TWR	124.005	EAST MIDLANDS TOWER
RAD	126.180, 134.180, 120.130*	EAST MIDLANDS RADAR/DIRECTOR
ATIS	122.680	EAST MIDLANDS INFORMATION
ACC	134.430	SCOTTISH CONTROL
* See EGNX AD 2.18 for full details.		

TRANSITION ALTITUDE	6000
AREA MNM ALT (x100)	35

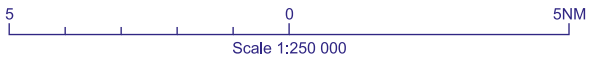


WARNING
Do not climb above **6000** until instructed by ATC.

CLIMB GRADIENTS
Critical climb gradients required for ATC or airspace purposes are shown on the chart. For rate of climb table see GEN.

VAR 0.0°W - 2022
Annual Rate of Change 0.20°E

AVERAGE TRACK MILEAGE TO TNT VOR	
TNT 3P	23
TNT 2N	27



TNT 2N RWY 27	Climb straight ahead until I-EME D1, then turn right onto 298°. At TNT D12 turn right onto TNT VOR R160 to TNT VOR. Crossing TNT D12 at 3000 or above. Crossing TNT D7 at 5000 or above (6.1%). Crossing TNT D4 at 6000.	N57, M868 and Q4.
TNT 3P RWY 09	As soon as possible after passing the end of the runway (but not below 500 AAL), turn right onto track 095°. At I-EMW D1.5 turn left to intercept TNT VOR R125 to TNT VOR. Crossing TNT D15 at 3000 or above (5%). Crossing TNT D8 at 6000 (7%).	N57, M868 and Q4.

- GENERAL INFORMATION**
- SIDs reflect Noise Preferential Routings. See EGNX AD 2.21 for Noise Abatement Procedures.
 - Climb Gradients in excess of 3.3% are necessary for ATC purposes.
 - Maximum 250KIAS below FL100 unless otherwise authorised.
 - Callsign for RTF frequency used **when Instructed** after take-off 'Scottish Control'. Occasionally aircraft may be required to communicate with 'East Midlands Radar' as instructed by ATC.
 - Report callsign, SID designator, current altitude and cleared level on first contact with 'Scottish Control'.
 - Cruising levels FL280 and below will be allocated by 'Scottish Control'. Cruising levels FL290 and above will be allocated by 'Scottish' or 'London Control' depending on route.
 - Expect first CPDLC Data Link Authority to be EGPX (Airways N601, P18) EGTT (Airway L603).