

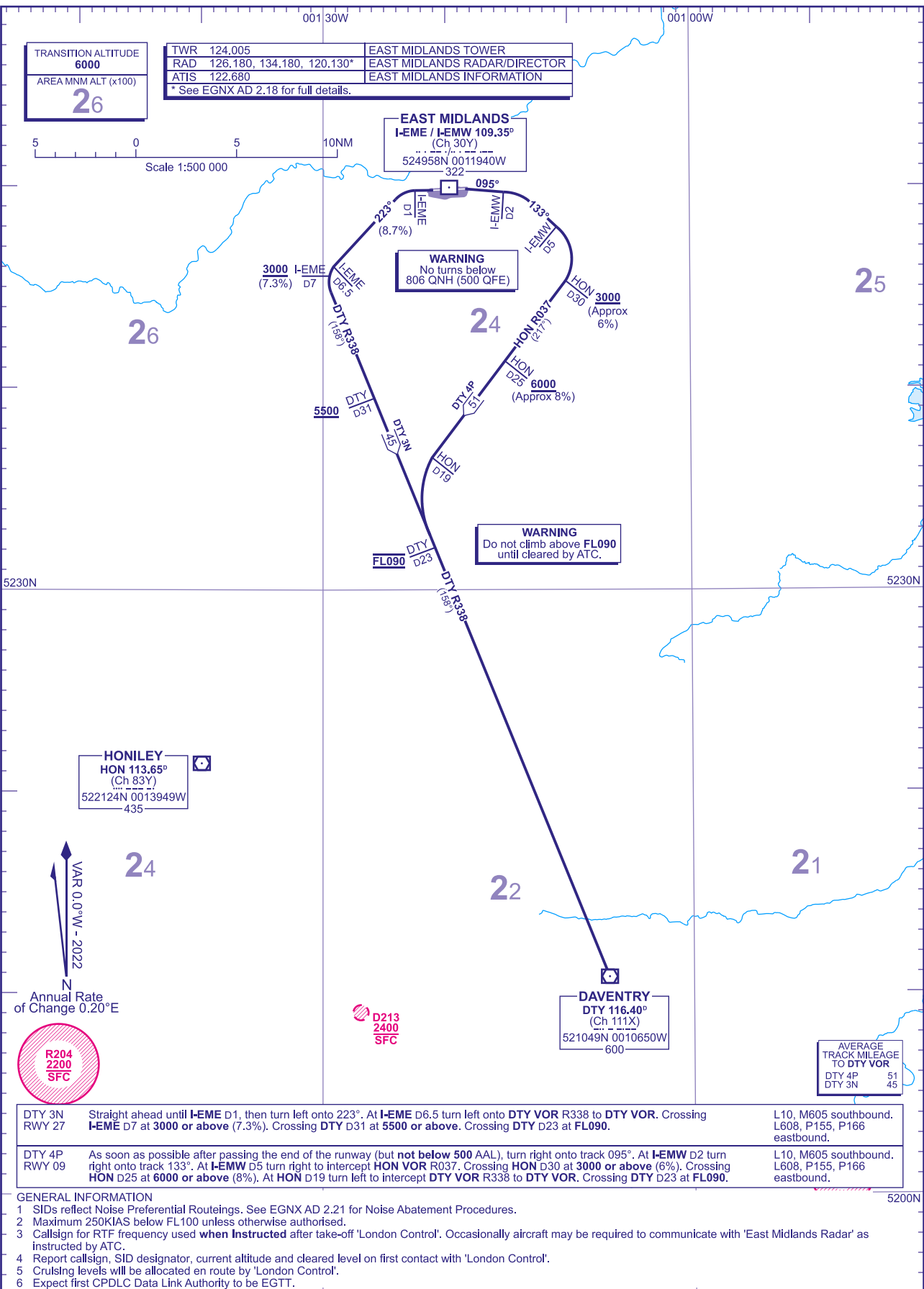
STANDARD DEPARTURE CHART - INSTRUMENT (SID) - ICAO

DISTANCES IN NAUTICAL MILES
BEARINGS, TRACKS AND RADIALS ARE MAGNETIC
ALTITUDES AND ELEVATIONS IN FEET

EAST MIDLANDS DAVENTRY

TRANSITION ALTITUDE
6000
AREA MNM ALT (x100)
26

TWR	124.005	EAST MIDLANDS TOWER
RAD	126.180, 134.180, 120.130*	EAST MIDLANDS RADAR/DIRECTOR
ATIS	122.680	EAST MIDLANDS INFORMATION
* See EGNX AD 2.18 for full details.		



HONILEY
HON 113.65°
(Ch 83Y)
522124N 0013949W
435

DAVENTRY
DTY 116.40°
(Ch 111X)
521049N 0010650W
600

D213
2400
SFC

VAR 0.0°W - 2022
Annual Rate of Change 0.20°E

R204
2200
SFC

AVERAGE TRACK MILEAGE TO DTY VOR	
DTY 4P	51
DTY 3N	45

DTY 3N RWY 27	Straight ahead until I-EME D1, then turn left onto 223°. At I-EME D6.5 turn left onto DTY VOR R338 to DTY VOR . Crossing I-EME D7 at 3000 or above (7.3%). Crossing DTY D31 at 5500 or above . Crossing DTY D23 at FL090 .	L10, M605 southbound. L608, P155, P166 eastbound.
DTY 4P RWY 09	As soon as possible after passing the end of the runway (but not below 500 AAL), turn right onto track 095°. At I-EMW D2 turn right onto track 133°. At I-EMW D5 turn right to intercept HON VOR R037. Crossing HON D30 at 3000 or above (6%). Crossing HON D25 at 6000 or above (8%). At HON D19 turn left to intercept DTY VOR R338 to DTY VOR . Crossing DTY D23 at FL090 .	L10, M605 southbound. L608, P155, P166 eastbound.

- GENERAL INFORMATION
- SIDs reflect Noise Preferential Routings. See EGNX AD 2.21 for Noise Abatement Procedures.
 - Maximum 250KIAS below FL100 unless otherwise authorised.
 - Call sign for RTF frequency used **when instructed** after take-off 'London Control'. Occasionally aircraft may be required to communicate with 'East Midlands Radar' as instructed by ATC.
 - Report call sign, SID designator, current altitude and cleared level on first contact with 'London Control'.
 - Crusling levels will be allocated en route by 'London Control'.
 - Expect first CPDLC Data Link Authority to be EGTT.