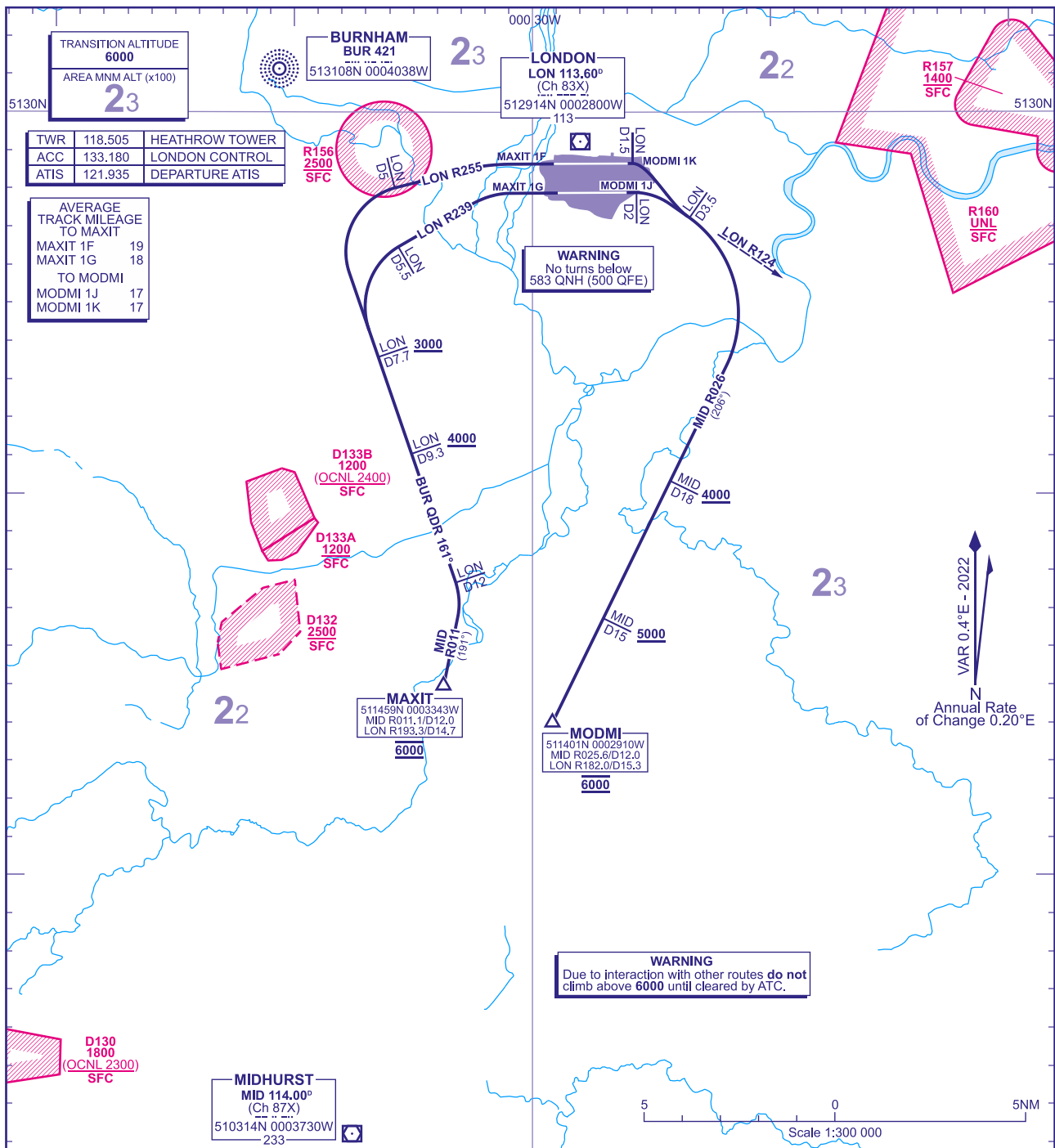


# STANDARD DEPARTURE CHART - INSTRUMENT (SID) - ICAO

DISTANCES IN NAUTICAL MILES  
BEARINGS, TRACKS AND RADIALS ARE MAGNETIC  
ALTITUDES AND ELEVATIONS IN FEET

# LONDON HEATHROW MAXIT 1F 1G MODMI 1J 1K



TRANSITION ALTITUDE  
**6000**  
AREA MNM ALT (x100)  
**23**

TWR	118.505	HEATHROW TOWER
ACC	133.180	LONDON CONTROL
ATIS	121.935	DEPARTURE ATIS

AVERAGE TRACK MILEAGE TO MAXIT

MAXIT 1F	19
MAXIT 1G	18

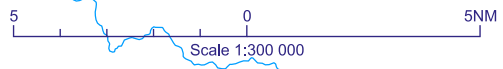
TO MODMI

MODMI 1J	17
MODMI 1K	17

**WARNING**  
No turns below  
583 QNH (500 QFE)

**WARNING**  
Due to interaction with other routes **do not**  
climb above 6000 until cleared by ATC.

VAR 0.4°E - 2022  
Annual Rate of Change 0.20°E



MAXIT 1F RWY 27R	Straight ahead to intercept LON VOR R255. At LON D5 turn left onto BUR NDB QDR 161°. Cross LON D7.7 at 3000 or above and LON D9.3 at 4000 or above. At LON D12 turn right onto MID VOR R011 and continue to cross MAXIT at 6000.	Via Y803.
MAXIT 1G RWY 27L	Straight ahead to intercept LON VOR R239. At LON D5.5 turn left onto BUR NDB QDR 161°. Cross LON D7.7 at 3000 or above and LON D9.3 at 4000 or above. At LON D12 turn right onto MID VOR R011 and continue to cross MAXIT at 6000.	Via M185.
MODMI 1J RWY 09R	Straight ahead to LON D2, then turn right onto LON VOR R124 until LON D3.5, then turn right onto MID VOR R026. Cross MID D18 at 4000 or above, MID D15 at 5000 or above, continue to cross MODMI at 6000.	
MODMI 1K RWY 09L	Straight ahead to LON D1.5, then turn right onto LON VOR R124 until LON D3.5, then turn right onto MID VOR R026. Cross MID D18 at 4000 or above, MID D15 at 5000 or above, continue to cross MODMI at 6000.	

**GENERAL INFORMATION**

- 1 Close in obstacles exist for departures from all runways. See Aerodrome Obstacle Chart and EGLL AD 2.10 Aerodrome Obstacles.
- 2 SIDs reflect Noise Preferential Routings. See EGLL AD 2.21 for Noise Abatement Procedures.
- 3 Cross Noise Monitoring Points not below 1083 QNH (1000 QFE) thereafter maintain minimum 4% climb gradient to 4000 (Note climb gradients greater than 4% may be required for ATC and airspace purposes) to comply with Noise Abatement requirements.
- 4 RWY 09L/09R Obstacle Clearance Requirements: Minimum Climb Gradient 3.8% to 500 AAL.
- 5 Callsign for RTF frequency used **when Instructed** after take-off 'London Control'. Report callsign, SID designator, current altitude and cleared altitude on first contact with 'London Control'.
- 6 En-route cruising level will be issued after take-off by 'London Control'. **Do not climb above SID levels until Instructed by ATC.**
- 7 Maximum 250KIAS below FL100 unless otherwise authorised.
- 8 Flight crew of aircraft unable to meet SID climb restrictions must inform Heathrow Delivery prior to pushback. Restrictions/delays may apply.