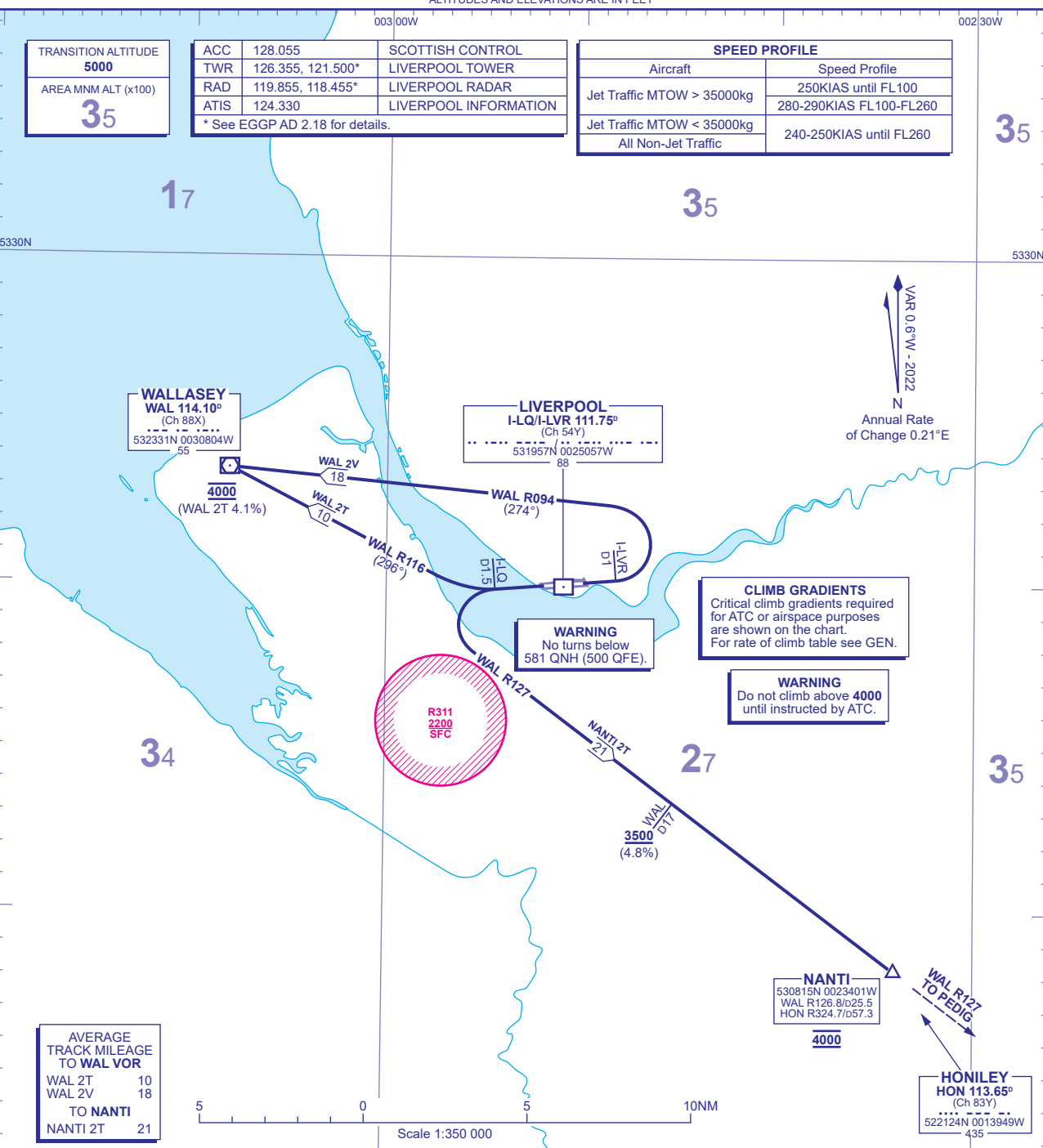


TRANSITION ALTITUDE	5000
AREA MNM ALT (x100)	35

ACC	128.055	SCOTTISH CONTROL
TWR	126.355, 121.500*	LIVERPOOL TOWER
RAD	119.855, 118.455*	LIVERPOOL RADAR
ATIS	124.330	LIVERPOOL INFORMATION
* See EGGP AD 2.18 for details.		

SPEED PROFILE	
Aircraft	Speed Profile
Jet Traffic MTOW > 35000kg	250KIAS until FL100 280-290KIAS FL100-FL260
Jet Traffic MTOW < 35000kg	240-250KIAS until FL260
All Non-Jet Traffic	240-250KIAS until FL260

35



CLIMB GRADIENTS
Critical climb gradients required for ATC or airspace purposes are shown on the chart. For rate of climb table see GEN.

WARNING
Do not climb above 4000 until instructed by ATC.

WARNING
No turns below 581 QNH (500 QFE).

AVERAGE TRACK MILEAGE TO WAL VOR	
WAL 2T	10
WAL 2V	18
TO NANTI	
NANTI 2T	21

WAL 2T RWY 27	Climb straight ahead to intercept WAL VOR R116 to WAL VOR. Crossing WAL VOR at 4000.	L10, (U)L70 (via L10/PENIL) westbound.
WAL 2V RWY 09	Climb straight ahead. At I-LVR D1 or 581 QNH (500 QFE) if sooner, turn left onto WAL VOR R094 to WAL VOR. Crossing WAL VOR at 4000.	L10, (U)L70 (via L10/PENIL) westbound.
NANTI 2T RWY 27	Climb straight ahead. At I-LQ D1.5 turn left onto WAL VOR R127 to NANTI. Crossing WAL D17 at 3500 or above. Crossing NANTI at 4000.	L8: (P18/L151), Y53, M605, L612 southbound.

GENERAL INFORMATION

- 1 Close in obstacles exist for departures from RWY 09. See Aerodrome Obstacle Chart and EGGP AD 2.10 Aerodrome Obstacles.
- 2 SIDs reflect Noise Preferential Routeings. See EGGP AD 2.21 for Noise Abatement Procedures.
- 3 RWY 27. Aircraft of more than 5730KG (12500LB) climb straight ahead at maximum rate to 1081 QNH (1000 QFE).
- 4 **Via WAL** en-route cruising levels will be allocated after departure by 'Scottish Control'. **Do not climb above SID level until cleared by ATC.**
Via NANTI cruising levels at FL190 and below will be allocated en-route by 'Scottish Control', cruising levels above FL190 will be allocated en-route by 'London Control'. **Do not climb above SID level until cleared by ATC.**
- 5 Callsign for RTF frequency used when instructed after take-off 'Scottish Control'. On first contact advise callsign, SID designator, current altitude and cleared altitude.
- 6 Maximum 250KIAS below FL100 unless otherwise authorised.
- 7 Speed Profile applies to all aircraft following the NANTI SID unless cancelled by ATC.
- 8 Expect first CPDLC Data Link Authority to be NANTI (EGTT) / WAL Airway L10 (EGPX) / WAL Airway L70 (EISN).

CHANGE (1/24): HON VOR RECALIBRATED. RADIAL.