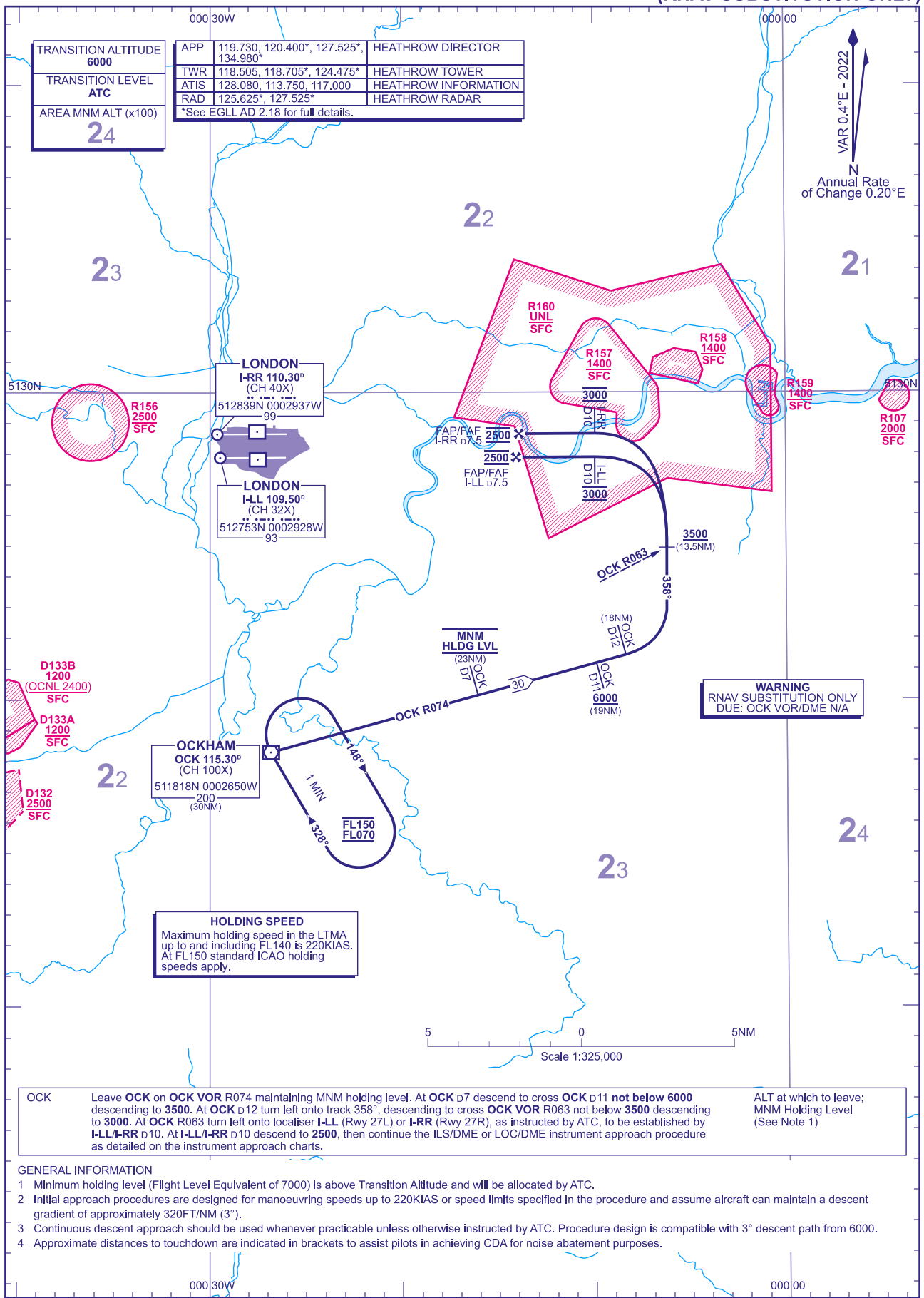


INITIAL APPROACH PROCEDURES ILS RWY 27L/R

DISTANCES IN NAUTICAL MILES
BEARINGS, TRACKS AND RADIALS ARE MAGNETIC
ALTITUDES AND ELEVATIONS IN FEET

LONDON HEATHROW via OCK (RNAV SUBSTITUTION ONLY)

TRANSITION ALTITUDE 6000	APP 119.730, 120.400*, 127.525*, 134.980*	HEATHROW DIRECTOR
TRANSITION LEVEL ATC	TWR 118.505, 118.705*, 124.475*	HEATHROW TOWER
AREA MNM ALT (x100) 24	ATIS 128.080, 113.750, 117.000	HEATHROW INFORMATION
	RAD 125.625*, 127.525*	HEATHROW RADAR
	*See EGLL AD 2.18 for full details.	



OCK Leave **OCK** on **OCK** VOR R074 maintaining MNM holding level. At **OCK** D7 descend to cross **OCK** D11 not below 6000 descending to 3500. At **OCK** D12 turn left onto track 358°, descending to cross **OCK** VOR R063 not below 3500 descending to 3000. At **OCK** R063 turn left onto localiser I-LL (Rwy 27L) or I-RR (Rwy 27R), as instructed by ATC, to be established by I-LL/I-RR D10. At I-LL/I-RR D10 descend to 2500, then continue the ILS/DME or LOC/DME instrument approach procedure as detailed on the instrument approach charts.

ALT at which to leave;
MNM Holding Level
(See Note 1)

- GENERAL INFORMATION**
- 1 Minimum holding level (Flight Level Equivalent of 7000) is above Transition Altitude and will be allocated by ATC.
 - 2 Initial approach procedures are designed for manoeuvring speeds up to 220KIAS or speed limits specified in the procedure and assume aircraft can maintain a descent gradient of approximately 320FT/NM (3°).
 - 3 Continuous descent approach should be used whenever practicable unless otherwise instructed by ATC. Procedure design is compatible with 3° descent path from 6000.
 - 4 Approximate distances to touchdown are indicated in brackets to assist pilots in achieving CDA for noise abatement purposes.