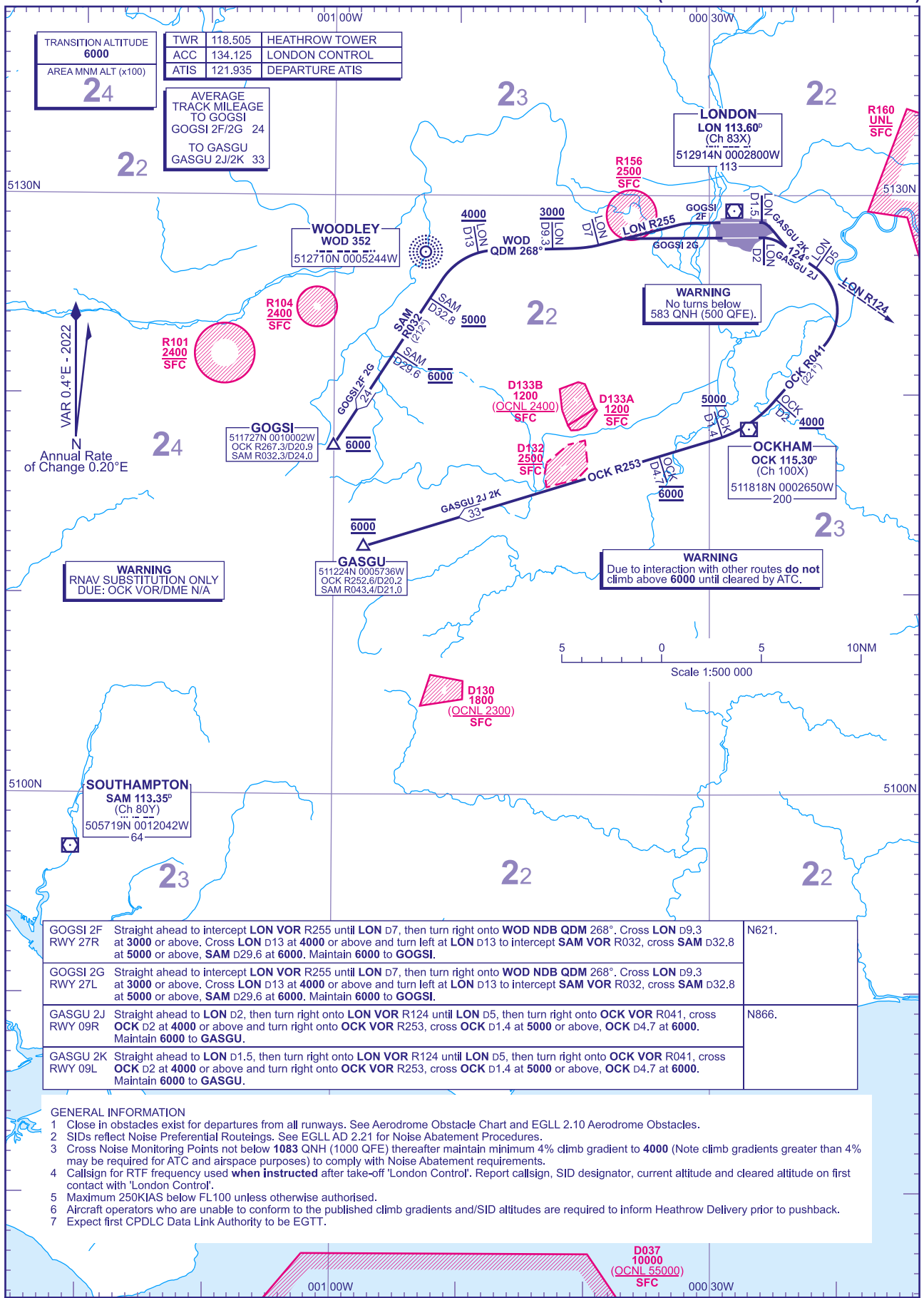


STANDARD DEPARTURE CHART - INSTRUMENT (SID) - ICAO

Distances in Nautical Miles
Bearings, Tracks and Radials are Magnetic
Altitudes and Elevations in Feet

LONDON HEATHROW GOGSI 2F 2G GASGU 2J 2K (RNAV SUBSTITUTION ONLY)



TRANSITION ALTITUDE	6000
AREA MNM ALT (x100)	24

TWR	118.505	HEATHROW TOWER
ACC	134.125	LONDON CONTROL
ATIS	121.935	DEPARTURE ATIS

AVERAGE TRACK MILEAGE TO GOGSI	GOGSI 2F/2G 24
TO GASGU	GASGU 2J/2K 33

WOODLEY
WOD 352
512710N 0005244W

LONDON
LON 113.60°
(Ch 83X)
512914N 0002800W
113

GOGSI
511727N 0010002W
OCK R267.3/D20.9
SAM R032.3/D24.0

GASGU
511224N 0005736W
OCK R252.6/D20.2
SAM R043.4/D21.0

OCKHAM
OCK 115.30°
(Ch 100X)
511818N 0002650W
200

WARNING
RNAV SUBSTITUTION ONLY
DUE: OCK VOR/DME N/A

WARNING
Due to interaction with other routes do not climb above 6000 until cleared by ATC.

GOGSI 2F RWY 27R	Straight ahead to intercept LON VOR R255 until LON D7, then turn right onto WOD NDB QDM 268°. Cross LON D9.3 at 3000 or above, Cross LON D13 at 4000 or above and turn left at LON D13 to intercept SAM VOR R032, cross SAM D32.8 at 5000 or above, SAM D29.6 at 6000. Maintain 6000 to GOGSI.	N621.
GOGSI 2G RWY 27L	Straight ahead to intercept LON VOR R255 until LON D7, then turn right onto WOD NDB QDM 268°. Cross LON D9.3 at 3000 or above, Cross LON D13 at 4000 or above and turn left at LON D13 to intercept SAM VOR R032, cross SAM D32.8 at 5000 or above, SAM D29.6 at 6000. Maintain 6000 to GOGSI.	N621.
GASGU 2J RWY 09R	Straight ahead to LON D2, then turn right onto LON VOR R124 until LON D5, then turn right onto OCK VOR R041, cross OCK D2 at 4000 or above and turn right onto OCK VOR R253, cross OCK D1.4 at 5000 or above, OCK D4.7 at 6000. Maintain 6000 to GASGU.	N866.
GASGU 2K RWY 09L	Straight ahead to LON D1.5, then turn right onto LON VOR R124 until LON D5, then turn right onto OCK VOR R041, cross OCK D2 at 4000 or above and turn right onto OCK VOR R253, cross OCK D1.4 at 5000 or above, OCK D4.7 at 6000. Maintain 6000 to GASGU.	N866.

GENERAL INFORMATION

- Close in obstacles exist for departures from all runways. See Aerodrome Obstacle Chart and EGLL 2.10 Aerodrome Obstacles.
- SIDs reflect Noise Preferential Routings. See EGLL AD 2.21 for Noise Abatement Procedures.
- Cross Noise Monitoring Points not below 1083 QNH (1000 QFE) thereafter maintain minimum 4% climb gradient to 4000 (Note climb gradients greater than 4% may be required for ATC and airspace purposes) to comply with Noise Abatement requirements.
- Callsign for RTF frequency used when instructed after take-off 'London Control'. Report callsign, SID designator, current altitude and cleared altitude on first contact with 'London Control'.
- Maximum 250KIAS below FL100 unless otherwise authorised.
- Aircraft operators who are unable to conform to the published climb gradients and/SID altitudes are required to inform Heathrow Delivery prior to pushback.
- Expect first CPDLC Data Link Authority to be EGTG.