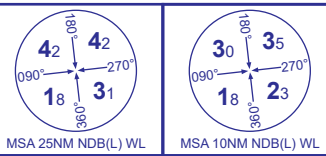


INSTRUMENT APPROACH CHART - ICAO

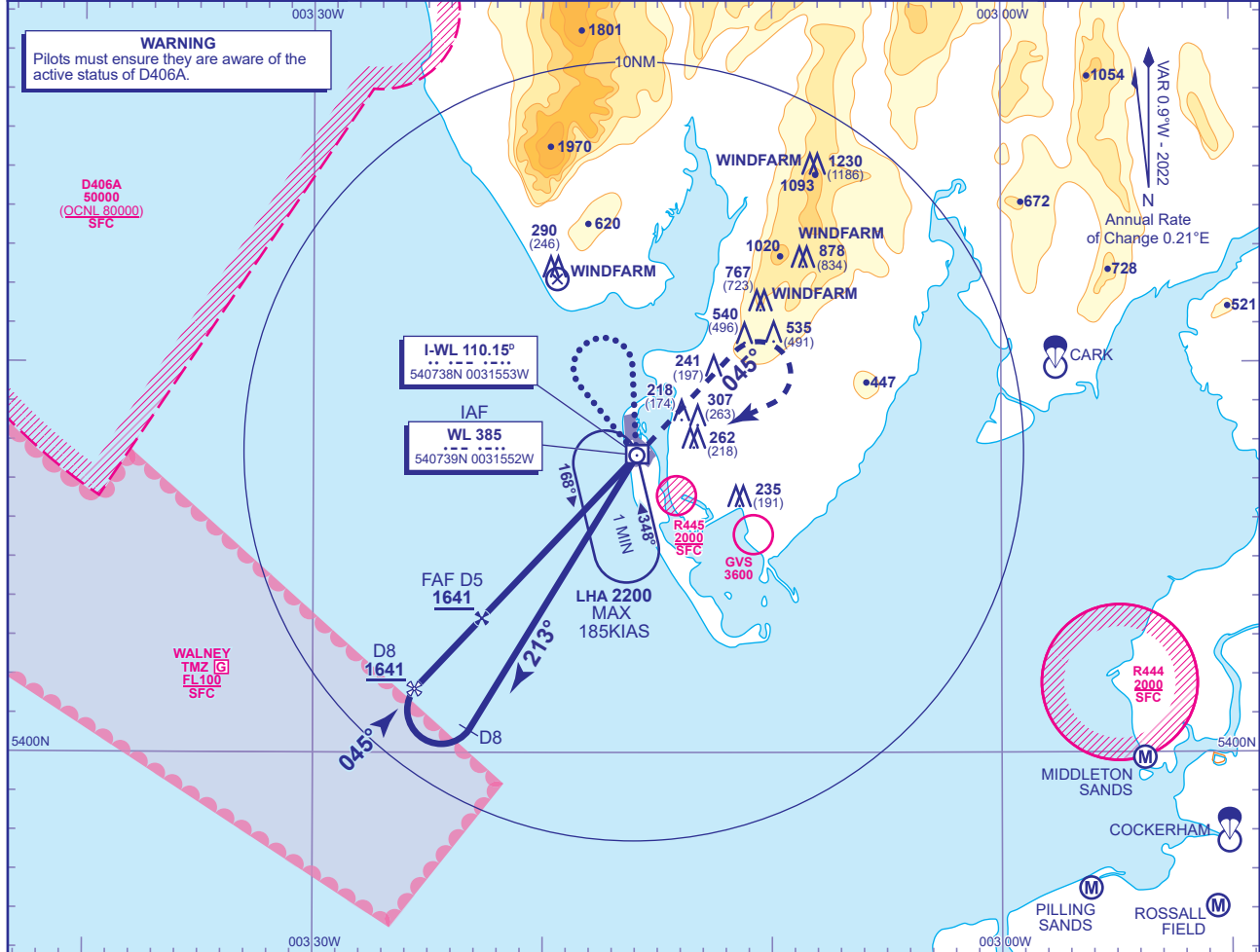
WALNEY NDB(L)/DME TO AERODROME (ACFT CAT B)



AFIS 118.080	WALNEY INFORMATION	AD ELEVATION 44
		THR ELEVATION 44
		OBSTACLE ELEVATION 1230 AMSL (1186) (ABOVE THR)
		BEARINGS ARE MAGNETIC

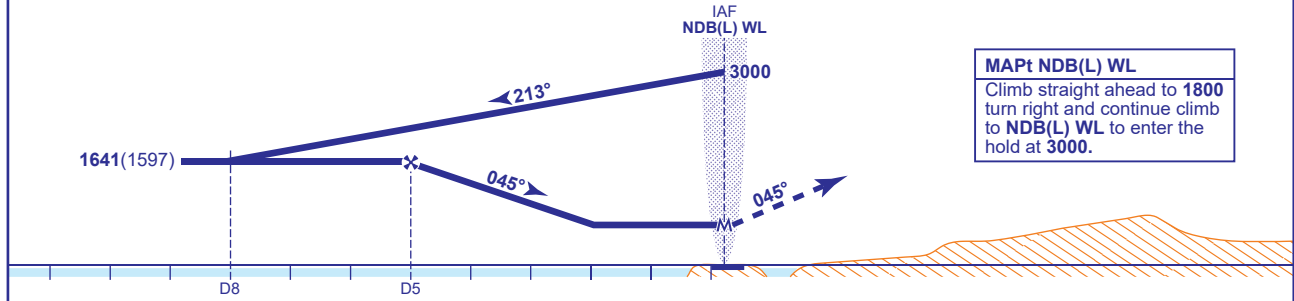
TRANSITION ALTITUDE 3000

WARNING
Pilots must ensure they are aware of the active status of D406A.



RECOMMENDED PROFILE Gradient 5.16%, 313FT/NM

DME I-WL	5	4	3	2
ALT(HGT)	1641(1597)	1328(1284)	1014(970)	701(657)



MAPt NDB(L) WL
Climb straight ahead to 1800 turn right and continue climb to NDB(L) WL to enter the hold at 3000.

Aircraft Category	B	Rate of descent	G/S KT	160	140	120	100	80
OCA (OCH)	Procedure 700(656)		FT/MIN	840	730	630	520	420
VM(C)OCA (OCH AAL)	Total Area 700(656)							

BASE TURN PROCEDURE AFTER HOLDING From overhead NDB(L) WL **not below 2300** fly outbound on NDB(L) WL QDR 322° for 1 MIN. Baseturn right and manoeuvre onto NDB(L) WL QDM 179° to overhead NDB(L) WL. Turn right fly outbound on NDB(L) WL QDR 213°M descending **not below 1641**. At I-WL DME 8 baseturn right to intercept extended FAT, continue as for main procedure.

AIRCRAFT UNABLE TO RECEIVE DME I-WL
From overhead NDB(L) WL **not below 2300** fly outbound on NDB(L) WL QDR 322° for 1 MIN, baseturn right and manoeuvre onto NDB(L) WL QDM 179° to overhead NDB(L) WL. Turn right fly outbound on NDB(L) WL QDR 213° for 3MIN descending **not below 1641**, baseturn right and manoeuvre onto FAT, continue as for main procedure.

NOTE Use of this procedure is strictly PPR from the aerodrome operator.

CHANGE (11/23): AFIS FREQUENCY.