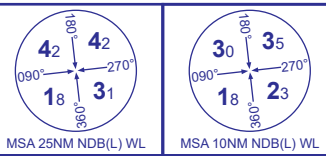


INSTRUMENT DEPARTURE - ICAO

WALNEYS
NDB(L)/DME
RWY 35
 (ACFT CAT B)



AFIS 118.080	WALNEYS INFORMATION	AD ELEVATION 44
		THR ELEVATION 44
		OBSTACLE ELEVATION 1230 AMSL (1186) (ABOVE THR)
		BEARINGS ARE MAGNETIC

TRANSITION ALTITUDE **3000**

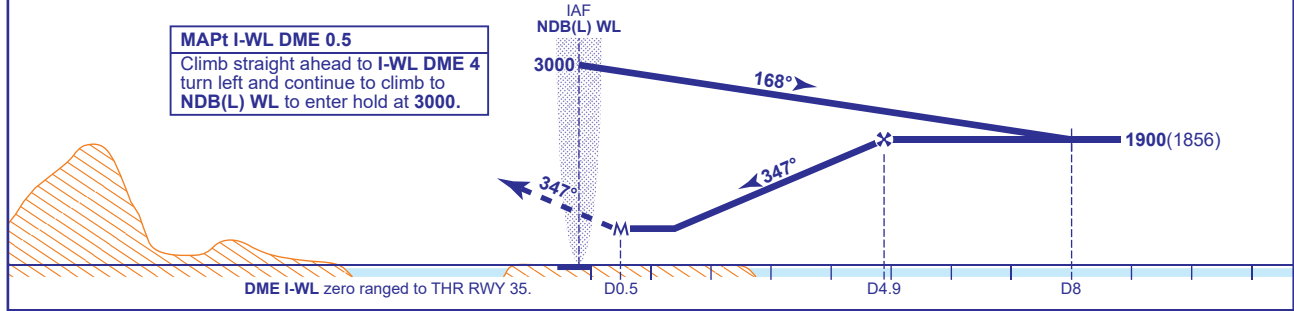
WARNING
 Pilots must ensure they are aware of the active status of D406A.
Procedure not available without DME.



RECOMMENDED PROFILE Gradient 6.12%, 372FT/NM

DME I-WL	4	3	2
ALT(HGT)	1565(1521)	1193(1149)	821(777)

MAPt I-WL DME 0.5
 Climb straight ahead to I-WL DME 4
 turn left and continue to climb to
 NDB(L) WL to enter hold at 3000.



Aircraft Category	B	Rate of descent	G/S KT	160	140	120	100	80
OCA (OCH)	Procedure		FT/MIN	990	870	740	620	500
VM(C)OCA (OCH AAL)	Total Area							

ALTERNATIVE BASE TURN PROCEDURE AFTER HOLDING
 From overhead NDB(L) WL **not below 2300** fly outbound on NDB(L) WL QDR 322° for 1 MIN, baseturn right and manoeuvre onto NDB(L) WL QDM 179° to overhead NDB(L) WL. Continue outbound on NDB(L) WL QDR 179° descending **not below 1900**. At I-WL DME 8 baseturn left to intercept extended FAT, continue as for main procedure.

ALTERNATIVE BASE TURN PROCEDURE DIRECT ENTRY
 Arrive overhead NDB(L) WL **not below MSA**, only within sector entry between NDB(L) WL QDM 149° and QDM 209°. Fly outbound on NDB(L) WL QDR 179° descending **not below 1900**. At I-WL DME 8 baseturn left to intercept extended FAT, continue as for main procedure.

NOTE Use of this procedure is strictly PPR from the aerodrome operator.
CHANGE (11/23): AFIS FREQUENCY.