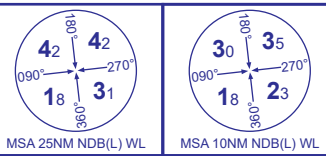


INSTRUMENT APPROACH - ICAO

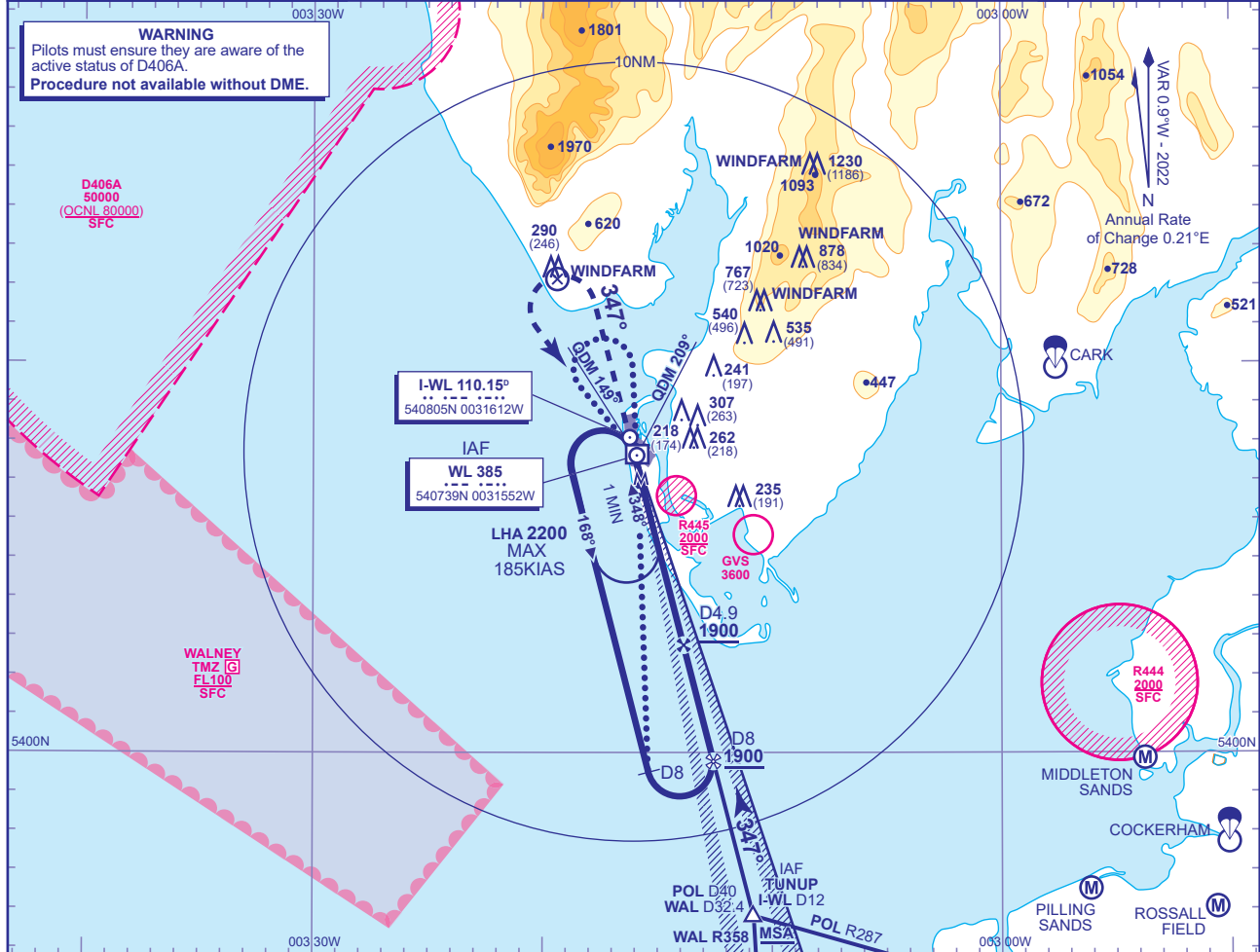
WALNEYP
LOC/DME/NDB(L)
RWY 35
 (ACFT CAT B)



AFIS 118.080	WALNEYP INFORMATION	AD ELEVATION 44
		THR ELEVATION 44
		OBSTACLE ELEVATION 1230 AMSL (1186) (ABOVE THR)
		BEARINGS ARE MAGNETIC

TRANSITION ALTITUDE 3000

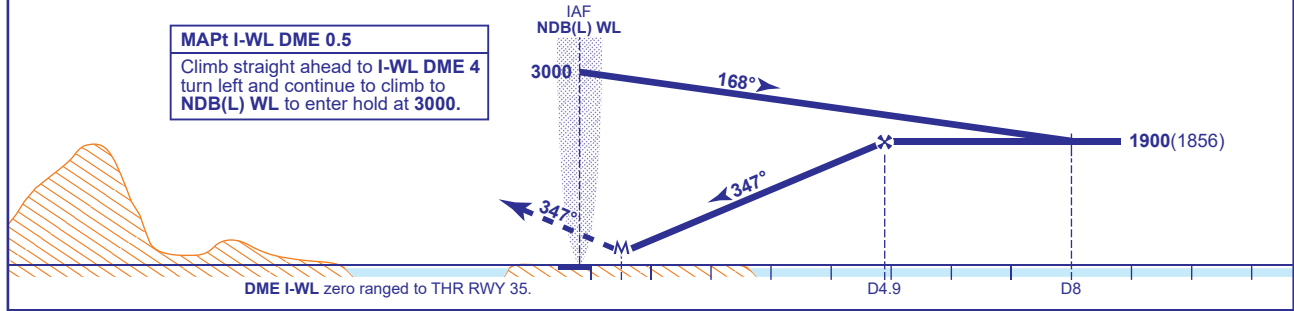
WARNING
 Pilots must ensure they are aware of the active status of D406A.
 Procedure not available without DME.



RECOMMENDED PROFILE Gradient 6.12%, 372FT/NM

DME I-WL	4	3	2	1
ALT(HGT)	1565(1521)	1193(1149)	821(777)	449(405)

MAPt I-WL DME 0.5
 Climb straight ahead to I-WL DME 4
 turn left and continue to climb to
 NDB(L) WL to enter hold at 3000.



Aircraft Category	B	Rate of descent	G/S KT	160	140	120	100	80
OCA (OCH)	Procedure		FT/MIN	990	870	740	620	500
VM(C)OCA (OCH AAL)	Total Area							
	700(656)							

ALTERNATIVE BASE TURN PROCEDURE AFTER HOLDING
 From overhead NDB(L) WL **not below 2300** fly outbound on NDB(L) WL QDR 322° for 1 MIN, baseturn right and manoeuvre onto NDB(L) WL QDM 179° to overhead NDB(L) WL. Continue outbound on NDB(L) WL QDR 179° descending **not below 1900**. At I-WL DME 8 baseturn left to intercept the LOC, continue as for main procedure.

ALTERNATIVE BASE TURN PROCEDURE DIRECT ENTRY
 Arrive overhead NDB(L) WL **not below MSA**, only within sector entry between NDB(L) WL QDM 149° and QDM 209°. Fly outbound on NDB(L) WL QDR 179° descending **not below 1900**. At I-WL DME 8 baseturn left to intercept the LOC, continue as for main procedure.

NOTE Use of this procedure is strictly PPR from the aerodrome operator.

CHANGE (11/23): AFIS FREQUENCY.