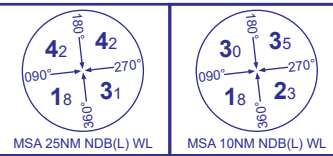


# INSTRUMENT DEPARTURE - ICAO

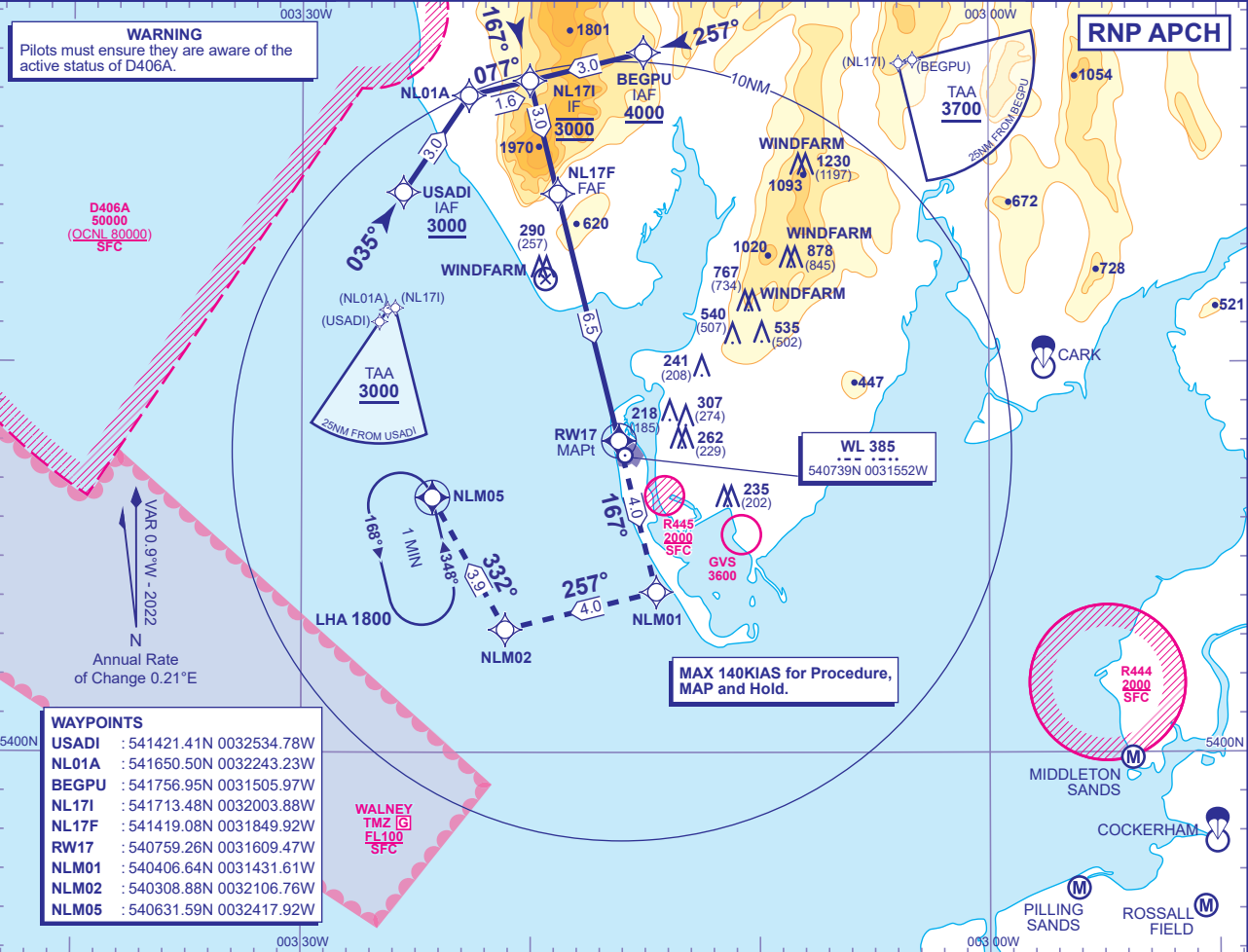
**WALNEY RNP RWY 17**  
(ACFT CAT A,B)



AFIS	118.080	WALNEY INFORMATION	AD ELEVATION	44
			THR ELEVATION	33
			OBSTACLE ELEVATION	1230 AMSL (1197) (ABOVE THR)
			BEARINGS ARE MAGNETIC	

MIN TEMP -10°C  
TRANSITION ALTITUDE 3000

**WARNING**  
Pilots must ensure they are aware of the active status of D406A.

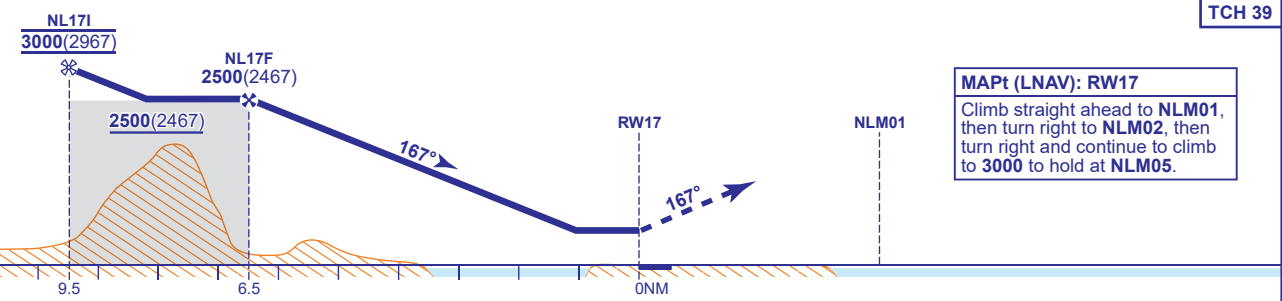


**WAYPOINTS**

USADI	: 541421.41N 0032534.78W
NL01A	: 541650.50N 0032243.23W
BEGPU	: 541756.95N 0031505.97W
NL17I	: 541713.48N 0032003.88W
NL17F	: 541419.08N 0031849.92W
RW17	: 540759.26N 0031609.47W
NLM01	: 540406.64N 0031431.61W
NLM02	: 540308.88N 0032106.76W
NLM05	: 540631.59N 0032417.92W

**RECOMMENDED PROFILE VNAV - VERTICAL PATH ANGLE 3.5° (LNAV 6.1% 372FT/NM)**

	NM to RW17	6	5	4	3	2
ALT(HGT)		2310(2277)	1940(1907)	1560(1527)	1190(1157)	820(787)



Aircraft Category	A	B	Rate of descent	G/S KT	160	140	120	100	80
	OCA (OCH)	LNAV		880(847)	880(847)	FT/MIN	990	870	740
VM(C)OCA (OCH AAL)	Total Area	700(656)	700(656)						

**NOTES**

- WARNING: High terrain in the intermediate segment. Do not descend below 2500 before reaching the FAF.
- Arrivals from the north route via BEGPU at 4200. Arrival via NL17I not available.
- Subsequent Approach after a MAP is only available via USADI.

CHANGE (11/23): AFIS FREQUENCY.